



WS-SH
Wire Saddle, Square Hole Mount

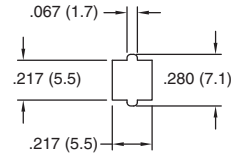
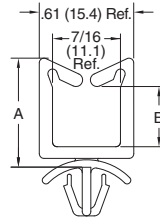


Specifications:

- Material: Nylon 6/6
- Color: Natural

Features:

- Mounts into a square hole to prevent rotation



Mounting Hole

Item No.		Panel Thickness		A Ref.		B Ref.		Depth		Bulk Pack Qty.			
UL94 V-2	UL94 V-0	Approval	In	mm	In	mm	In	mm	In		mm		
WS-SH-1-01	WS-SH-1-19	UL	.031	.078	0.8	2.0	0.510	13.0	0.190	4.8	0.219	5.6	1000
WS-SH-2-01	WS-SH-2-19	UL	.031	.078	0.8	2.0	0.700	17.8	0.390	10.0	0.219	5.6	1000
WS-SH-3-01	WS-SH-3-19	UL	.031	.078	0.8	2.0	1.060	26.9	0.750	19.1	0.219	5.6	1000
WS-SH-4-01	WS-SH-4-19	UL	.031	.078	0.8	2.0	1.370	34.8	1.070	27.2	0.219	5.6	1000

SMWSLT
Side Mount Wire Saddle

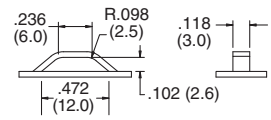
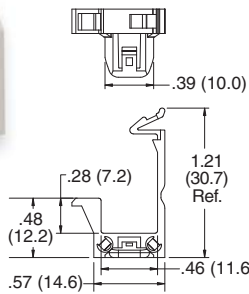


Specifications:

- Material: UL94 V-0 Nylon 6/6
- Color: Natural

Features:

- No protrusion through the chassis
- No risk of rotation
- Easy to install
- Removable by depressing locking tab
- Cables are locked in place yet easily removed



Mounting Dimensions

Item No.	Bulk Pack Qty.
SMWSLT-1-19	1000

MWSEB / WSB / MWSB / WS-SE-B
Wire Saddle on Adhesive Base

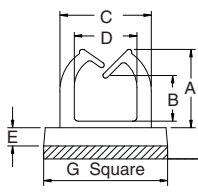


Figure 1

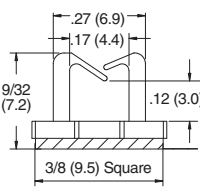


Figure 2

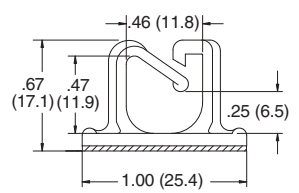


Figure 3

Specifications:

- Material: Nylon 6/6
- Color: Natural

Features:

- Self adhesive wire saddle is designed to support lightweight wire bundles
- Small profile design is ideal for routing fiber

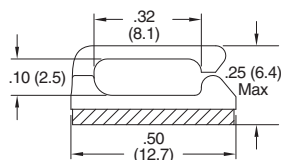


Figure 4

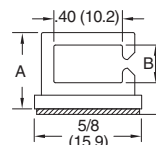


Figure 5

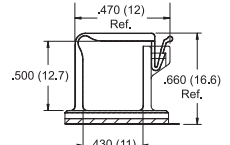


Figure 6

Item No.		A Ref.		B Ref.		C Ref.		D Ref.		E Ref.		G Ref.		Depth		Bulk Pack Qty.	
UL94 V-2	UL94 V-0	Approval	Figure	In	mm	In	mm	In	mm	In	mm	In	mm	In	mm		
MWSEB-1-01A-RT	MWSEB-1-19A-RT	UL	1	0.160	4.0	0.050	1.3	0.280	7.0	0.190	4.8	0.060	1.6	0.370	9.5	See Fig. 1	1000
MWSEB-2-01A-RT	MWSEB-2-19A-RT	UL	1	0.240	6.0	0.130	3.3	0.280	7.0	0.190	4.8	0.060	1.6	0.370	9.5	See Fig. 1	1000
MWSEB-3-01A-RT	MWSEB-3-19A-RT	UL	1	0.290	7.3	0.120	3.0	0.350	9.0	0.260	6.6	0.080	2.0	0.500	12.7	See Fig. 1	1000
MWSEB-4-01A-RT	MWSEB-4-19A-RT	UL	1	0.360	9.2	0.190	4.8	0.430	10.8	0.320	8.0	0.080	2.0	0.500	12.7	See Fig. 1	1000
MWSEB-5-01A-RT	MWSEB-5-19A-RT	UL	1	0.440	11.2	0.230	5.8	0.470	11.9	0.360	9.1	0.080	2.0	0.500	12.7	See Fig. 1	1000
MWSEB-6-01A-RT	MWSEB-6-19A-RT	UL	1	0.510	13.0	0.330	8.4	0.470	12.0	0.360	9.2	0.080	2.0	0.500	12.7	See Fig. 1	1000
MWSB-1-01A-RT	MWSB-1-19A-RT	UL	2												See Figure 2	1000	
WSB-2-01A-RT	—	UL	3												See Figure 3	1000	
MWSSEB-1-01A-RT	MWSSEB-1-19A-RT	UL	4												See Figure 4	1000	
MWSSEBE-1-01A	MWSSEBE-1-19A	UL	4												See Figure 4	1000	
WS-SE-B-1-01A	—	UL	5	0.450	11.4	0.220	5.6								See Figure 5	1000	
WS-SE-B-2-01A	—	UL	5	0.675	17.1	0.450	11.4								See Figure 5	1000	
WSLTB-03A-19A	—	UL	6												See Figure 6	1000	