

SECTION OF SD CARD

NOTES:  
 1.HOUSING: HIGH TEMPERATURE THERMOPLASTIC.  
 GLASS FIBER FILLED,UL94V-0, COLOR: BLACK  
 TERMINAL: COPPER ALLOY, SELECTIVE Au PLATING  
 METEL SHELL: STAINLESS STEEL  
 EACH SWITCHES: COPPER ALLOY, SELECTIVE Au PLATING.  
 EACH NAILS: COPPER ALLOY, SELECTIVE AU PLATING.  
 COIL SPRING: STEEL WIRE.  
 CAM PIN: STAINLESS STEEL

2.TERMINAL AND NAIL COPLANARITY TO BE 0.1MAX

3.CONTACT POSITION OF CARD SIDE

| TERMINAL NO. | CONTACT POSITION |
|--------------|------------------|
| NO.1         | 2.4              |
| NO.2,5,6,7,8 | 2.9              |
| NO.3,4       | 3.4              |
| NO.9         | 5.2              |

4.OPEN/CLOSE OF EACH SWITCH

|                     | WRITE PROTECT SWITCH   |                       | SWITCH |
|---------------------|------------------------|-----------------------|--------|
|                     | WRITE PROTECT POSITION | WRITE ENABLE POSITION |        |
| CARD UNINSERTION    | OPEN                   | OPEN                  | OPEN   |
| CARD HALF INSERTION | CLOSE                  | CLOSE                 | OPEN   |
| CARD INSERTION      | OPEN                   | CLOSE                 | CLOSE  |

- 5.WHEN DELIVERING, THE PUSH/PUSH MECHANISM IS IN THE STATE OF THE UNLOCK.(CARD DASHING OUT POSITION)
- 6.CARD READ ONLY BY THE TIME THE CARD DETECTION.
- 7.I/O CONTACTS, BASE ON SD I/O ASSOC. REV.G.
- 8.PRODUCT SPECIFICATION: SEE TABLE
- 9.TERMINAL 1 TO BE SIGNAL DETECTING WHEN SD CARD INSERTING.

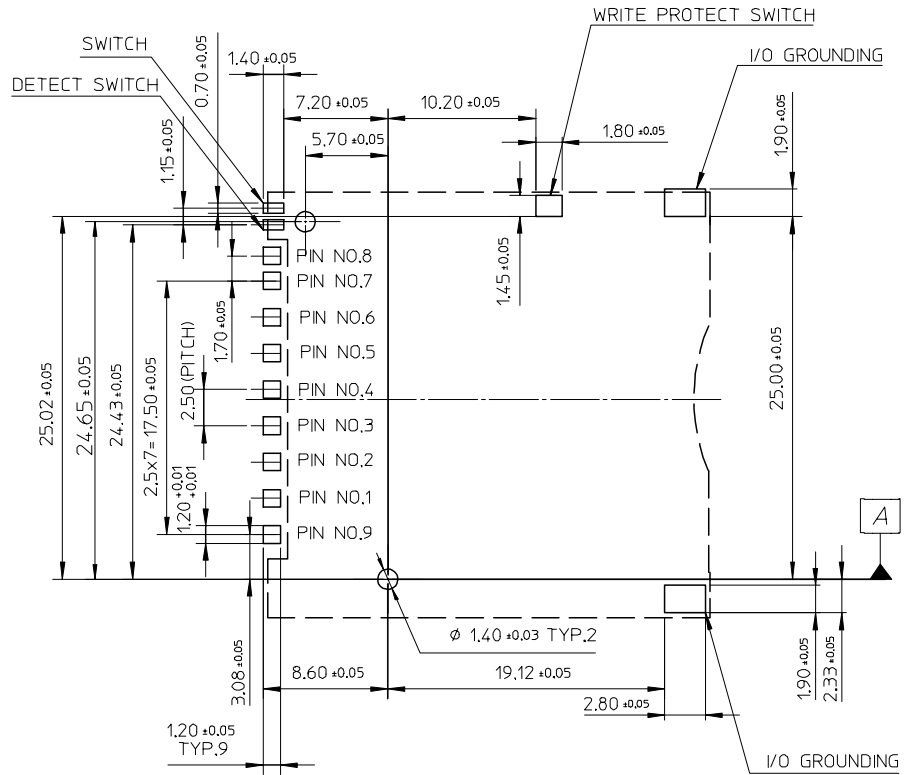
| PART NO.   | DESCRIPTION               | PRODUCT SPECIFICATION | REMARK      |
|------------|---------------------------|-----------------------|-------------|
| 67955-0001 | STANDARD                  | PS-67840-001          | FOR SD ONLY |
| 67955-0002 | STADARD W/O CARD LOCK PIN | PS-67913-003          | SD/MMC      |

ADD REMARK  
 EC NO: SH2005-0167  
 2004/12/08  
 DRAWN: JIJIAN  
 2004/12/08  
 CHKD:GRATE  
 2004/12/10  
 APPR: YIYAP

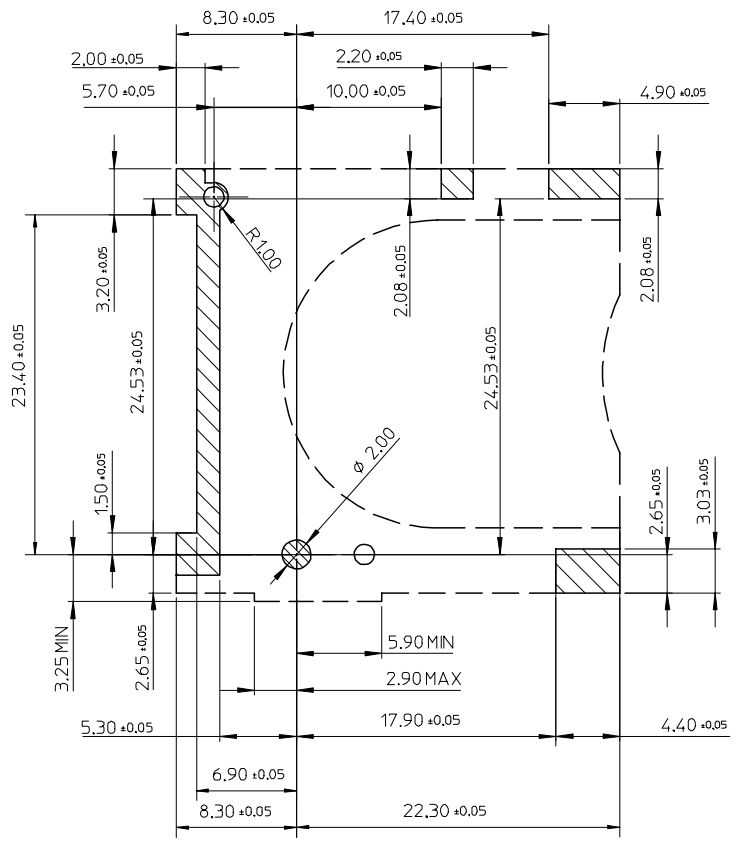
QUALITY SYMBOLS  
 ▽=0  
 ▽=0

GENERAL TOLERANCES (UNLESS SPECIFIED)  
 DIMENSION STYLE MM ONLY  
 SCALE 3:1  
 DESIGN UNITS METRIC  
 THIRD ANGLE PROJECTION  
 DRAWN BY VPENG DATE 20030325  
 CHECKED BY MWSCHANG DATE 20030325  
 APPROVED BY ELAN DATE 20030325  
 MATERIAL NO. SEE TABLE  
 DOCUMENT NO. SD-67955-001  
 SHEET NO. 1 OF 3  
 DRAFT WHERE APPLICABLE MUST REMAIN WITHIN DIMENSIONS

SD/I/O CARD CONN.  
 STAND OFF 2.0 MM  
 (PUSH-PUSH & REVERSE)  
 MOLEX INCORPORATED  
 THIS DRAWING CONTAINS INFORMATION THAT IS PROPRIETARY TO MOLEX INCORPORATED AND SHOULD NOT BE USED WITHOUT WRITTEN PERMISSION



RECOMMENDED PCB PATTERN LAYOUT



STAND OFF AREA FOR PATTERN PROHIBITION

ADD REMARK  
 EC NO: SH2005-0167 2004/12/08  
 DRWN: JTIAN 2004/12/08  
 CHKD: GRATE 2004/12/10  
 APPR: YTYAP 2004/12/10

| REV | DESCRIPTION |
|-----|-------------|
|     |             |

| QUALITY SYMBOLS |    |
|-----------------|----|
|                 | =0 |
|                 | =0 |

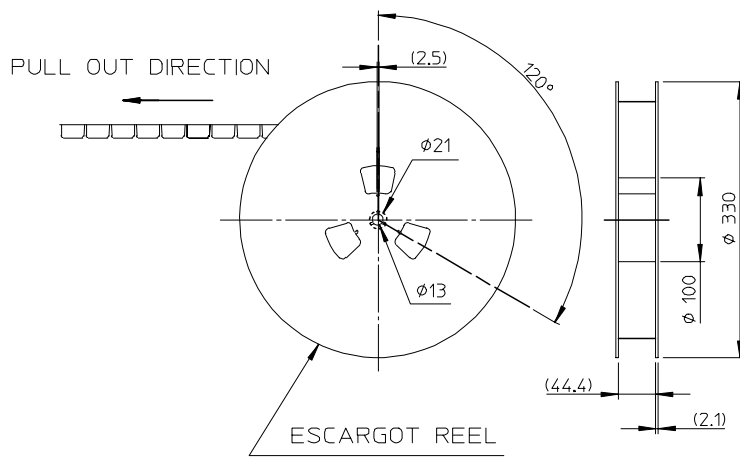
| GENERAL TOLERANCES (UNLESS SPECIFIED) |       |
|---------------------------------------|-------|
| mm                                    | INCH  |
| 4 PLACES ± ---                        | ± --- |
| 3 PLACES ± ---                        | ± --- |
| 2 PLACES ± 0.25                       | ± --- |
| 1 PLACE ± 0.25                        | ± --- |
| ANGULAR ± 3°                          |       |

DRAFT WHERE APPLICABLE  
 MUST REMAIN  
 WITHIN DIMENSIONS

| DIMENSION STYLE |          |
|-----------------|----------|
| MM ONLY         |          |
| DRAWN BY        | DATE     |
| VPENG           | 20030325 |
| CHECKED BY      | DATE     |
| WWSCHANG        | 20030325 |
| APPROVED BY     | DATE     |
| ELAN            | 20030325 |

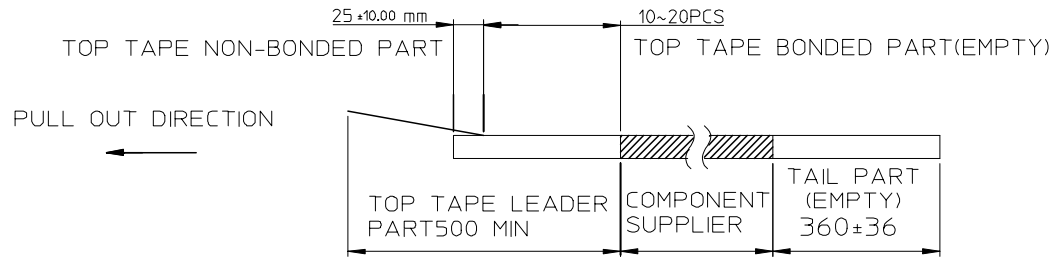
| SCALE                                                                                                                         | DESIGN UNITS                 | THIRD ANGLE PROJECTION |
|-------------------------------------------------------------------------------------------------------------------------------|------------------------------|------------------------|
| 3:1                                                                                                                           | METRIC                       |                        |
| SD/IO CARD CONN.<br>STAND OFF 2.0 MM<br>(PUSH-PUSH & REVERSE)                                                                 |                              |                        |
| MOLEX INCORPORATED                                                                                                            |                              | SHEET NO.<br>2 OF 3    |
| MATERIAL NO.<br>SEE SHEET 1                                                                                                   | DOCUMENT NO.<br>SD-67955-001 |                        |
| THIS DRAWING CONTAINS INFORMATION THAT IS PROPRIETARY TO MOLEX INCORPORATED AND SHOULD NOT BE USED WITHOUT WRITTEN PERMISSION |                              |                        |

10 9 8 7 6 5 4 3 2 1

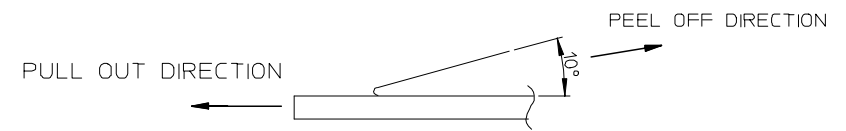


**NOTES**

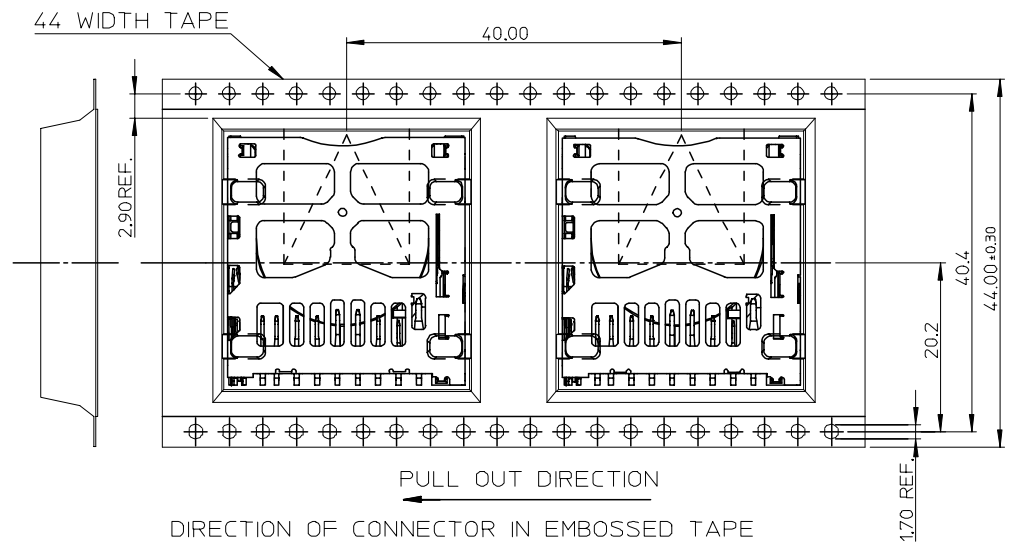
1. NUMBER OF CONNECTORS: 250 PCS/REEL
- 2.



3. PEEL OFF FORCE OF TOP TAPE: 0.1~1.3 N (10.2~130gf)  
PEELING DIRECTION AS SHOWN IN FOLLOWING FIG.)  
(PEEL OFF SPEED: 300mm/min.REF.)

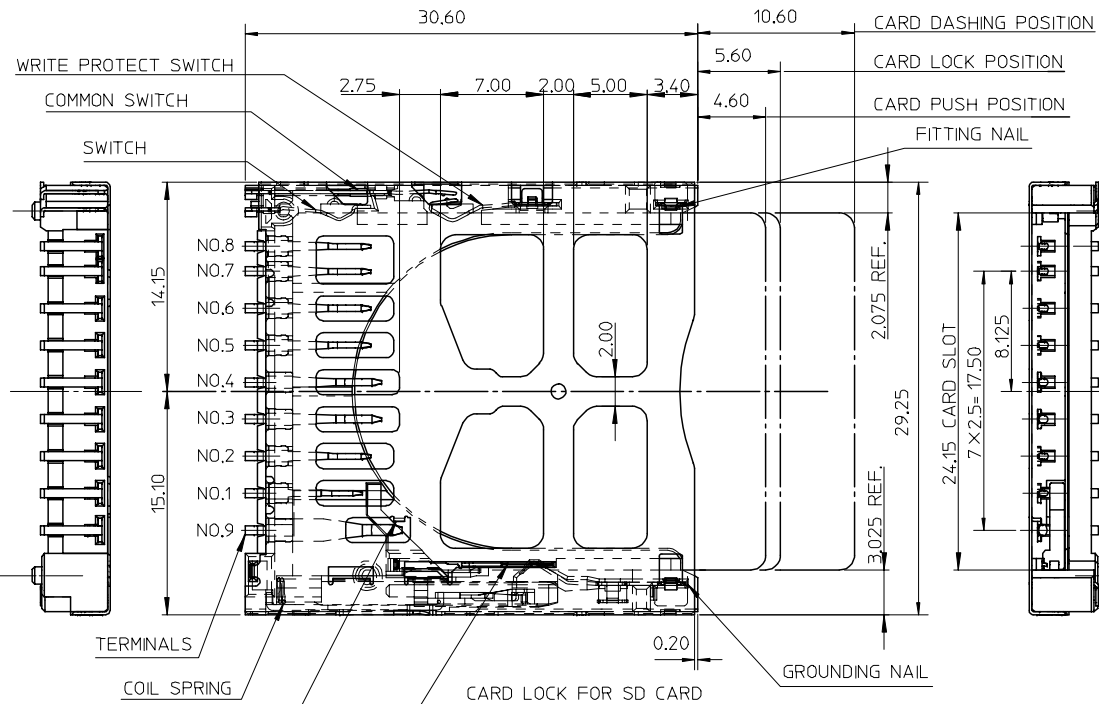
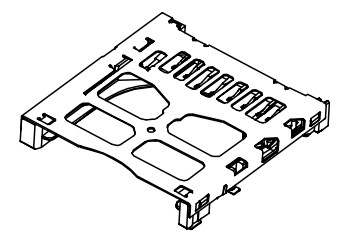
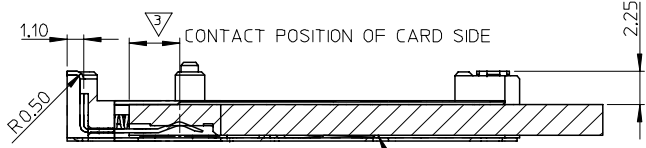
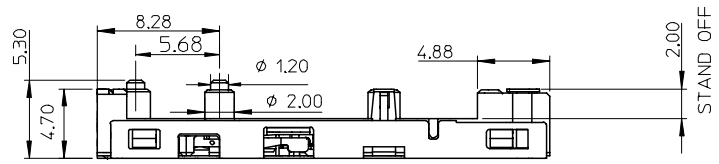


4. PACKAGING DRAWING REFERS TO PK-67955-001.



|                                                                                                                                 |                                      |                                       |                      |                            |                  |                              |                                                               |                        |  |  |
|---------------------------------------------------------------------------------------------------------------------------------|--------------------------------------|---------------------------------------|----------------------|----------------------------|------------------|------------------------------|---------------------------------------------------------------|------------------------|--|--|
| <b>ADD REMARK</b><br>EC NO: SH2005-0167<br>2004/12/08<br>DRAWN: JI'AN<br>2004/12/08<br>CHKD: GRATE<br>2004/12/10<br>APPR: YIYAP | <b>QUALITY SYMBOLS</b><br>▽=0<br>▽=0 | GENERAL TOLERANCES (UNLESS SPECIFIED) |                      | DIMENSION STYLE<br>MM ONLY |                  | SCALE<br>1:1                 | DESIGN UNITS<br>METRIC                                        | THIRD ANGLE PROJECTION |  |  |
|                                                                                                                                 |                                      | 4 PLACES                              | ± ---                | ± ---                      | DRAWN BY         | DATE                         | TITLE                                                         |                        |  |  |
|                                                                                                                                 |                                      | 3 PLACES                              | ± ---                | ± ---                      | CHECKED BY       | DATE                         | SD/IO CARD CONN.<br>STAND OFF 2.0 MM<br>(PUSH-PUSH & REVERSE) |                        |  |  |
|                                                                                                                                 |                                      | 2 PLACES                              | ± 0.25               | ± ---                      | APPROVED BY      | DATE                         |                                                               |                        |  |  |
| 1 PLACE                                                                                                                         | ± 0.25                               | ± ---                                 | MATERIAL NO.<br>ELAN |                            | DATE<br>20030325 | MOLEX INCORPORATED           |                                                               | SHEET NO.<br>3 OF 3    |  |  |
| DRAFT WHERE APPLICABLE<br>MUST REMAIN<br>WITHIN DIMENSIONS                                                                      |                                      | ANGULAR ± 3°                          |                      | SEE SHEET 1                |                  | DOCUMENT NO.<br>SD-67955-001 |                                                               |                        |  |  |

9 8 7 6 5 4 3 2 1



NOTES:  
 1.HOUSING: HIGH TEMPERATURE THERMOPLASTIC.  
 GLASS FIBER FILLED,UL94V-0, COLOR: BLACK  
 TERMINAL: COPPER ALLOY, SELECTIVE Au PLATING  
 METEL SHELL: STAINLESS STEEL  
 EACH SWITCHES: COPPER ALLOY, SELECTIVE Au PLATING.  
 EACH NAILS: COPPER ALLOY, SELECTIVE AU PLATING.  
 COIL SPRING: STEEL WIRE.  
 CAM PIN: STAINLESS STEEL

2.TERMINAL AND NAIL COPLANARITY TO BE 0.1MAX  
 3.CONTACT POSITION OF CARD SIDE

| TERMINAL NO. | CONTACT POSITION |
|--------------|------------------|
| NO.1         | 2.4              |
| NO.2,5,6,7,8 | 2.9              |
| NO.3,4       | 3.4              |
| NO.9         | 5.2              |

4.OPEN/CLOSE OF EACH SWITCH

|                     | WRITE PROTECT SWITCH   |                       | SWITCH |
|---------------------|------------------------|-----------------------|--------|
|                     | WRITE PROTECT POSITION | WRITE ENABLE POSITION |        |
| CARD UNINSERTION    | OPEN                   | OPEN                  | OPEN   |
| CARD HALF INSERTION | CLOSE                  | CLOSE                 | OPEN   |
| CARD INSERTION      | OPEN                   | CLOSE                 | CLOSE  |

- 5.WHEN DELIVERING, THE PUSH/PUSH MECHANISM IS IN THE STATE OF THE UNLOCK.(CARD DASHING OUT POSITION)
- 6.CARD READ ONLY BY THE TIME THE CARD DETECTION.
- 7.I/O CONTACTS, BASE ON SD I/O ASSOC. REV.G.
- 8.PRODUCT SPECIFICATION: SEE TABLE
- 9.TERMINAL 1 TO BE SIGNAL DETECTING WHEN SD CARD INSERTING.

| PART NO.   | DESCRIPTION               | PRODUCT SPECIFICATION | REMARK      |
|------------|---------------------------|-----------------------|-------------|
| 67955-8001 | STANDARD                  | PS-67913-003          | FOR SD ONLY |
| 67955-8002 | STADARD W/O CARD LOCK PIN |                       | SD/MMC      |

NEW RELEASE  
 EC NO: 2005/05/12  
 DRAWN: QI ZHANG  
 CHKD:  
 APPR:

QUALITY SYMBOLS  
 ▽=0  
 ▽=0

GENERAL TOLERANCES (UNLESS SPECIFIED)

|               | mm     | INCH  |
|---------------|--------|-------|
| 4 PLACES      | ± ---  | ± --- |
| 3 PLACES      | ± ---  | ± --- |
| 2 PLACES      | ± 0.25 | ± --- |
| 1 PLACE       | ± 0.25 | ± --- |
| ANGULAR ± 3 ° |        |       |

DRAFT WHERE APPLICABLE MUST REMAIN WITHIN DIMENSIONS

DIMENSION STYLE  
 MM ONLY

SCALE  
 3:1

DESIGN UNITS  
 METRIC

THIRD ANGLE PROJECTION

DRAWN BY: QI ZHANG  
 DATE: 2005/04/06

CHECKED BY: \_\_\_\_\_  
 DATE: \_\_\_\_\_

APPROVED BY: \_\_\_\_\_  
 DATE: \_\_\_\_\_

MATERIAL NO. \_\_\_\_\_  
 DOCUMENT NO. \_\_\_\_\_

SIZE: SEE TABLE  
 A3

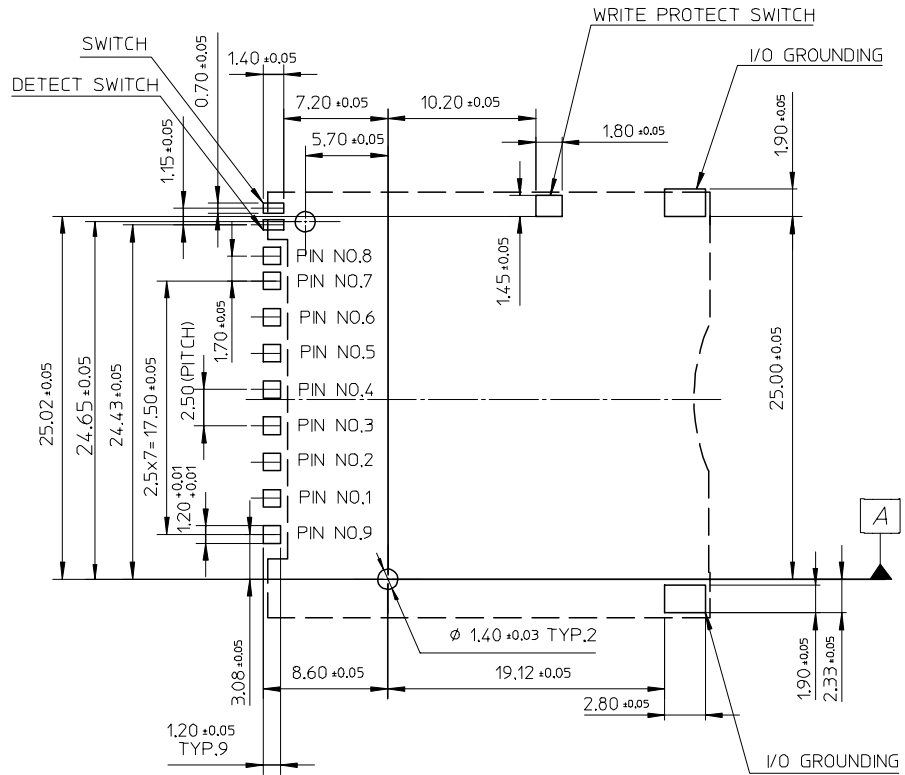
TITLE  
 SD/I/O CARD CONN.STAND OFF 2.0 MM(LEAD-FREE, PUSH-PUSH & REVERSE)

MOLEX INCORPORATED

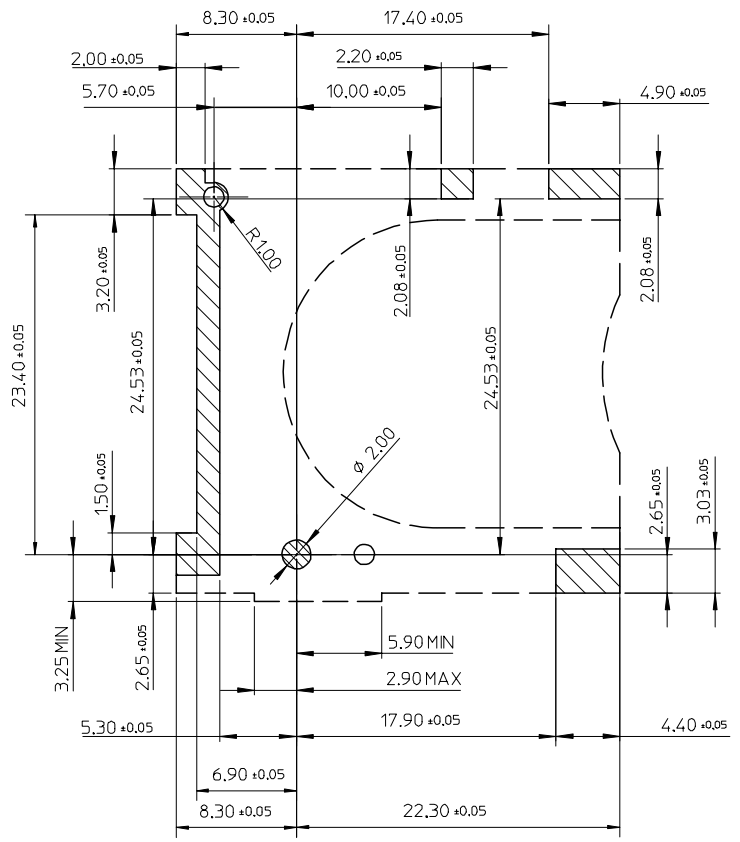
SD-67955-003

SHEET NO.  
 1 OF 3

THIS DRAWING CONTAINS INFORMATION THAT IS PROPRIETARY TO MOLEX INCORPORATED AND SHOULD NOT BE USED WITHOUT WRITTEN PERMISSION



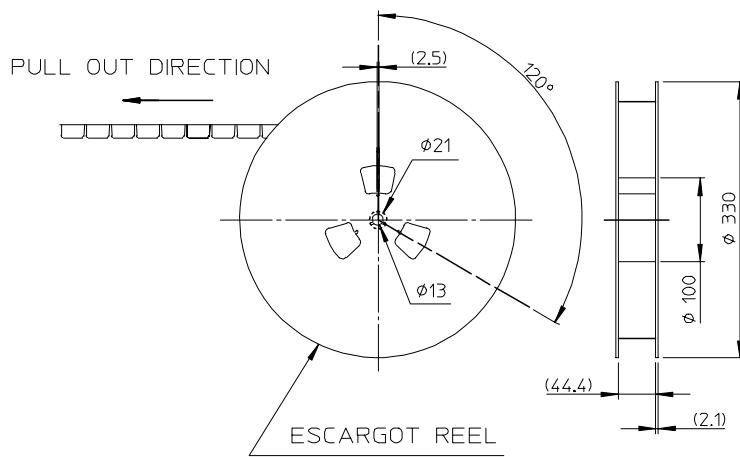
RECOMMENDED PCB PATTERN LAYOUT



STAND OFF AREA FOR PATTERN PROHIBITION

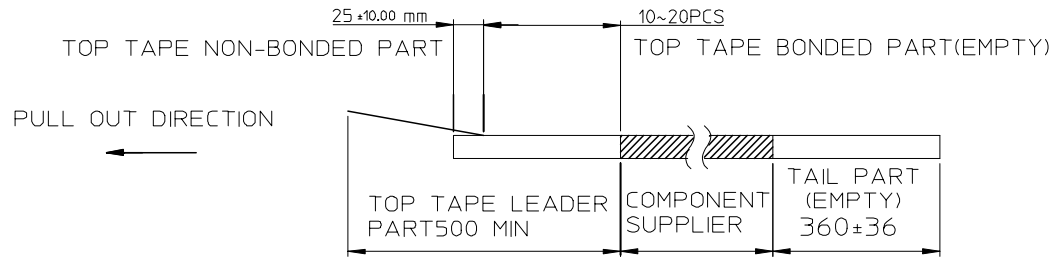
|                                                                 |                      |                                                            |                                                                                                                                                                   |                                                                                                          |                                                                  |                                                                                 |
|-----------------------------------------------------------------|----------------------|------------------------------------------------------------|-------------------------------------------------------------------------------------------------------------------------------------------------------------------|----------------------------------------------------------------------------------------------------------|------------------------------------------------------------------|---------------------------------------------------------------------------------|
| <b>NEW RELEASE</b><br>EC NO:<br>DRWN: QLZHANG<br>CHKD:<br>APPR: | DESCRIPTION<br>REV A | QUALITY SYMBOLS<br>▽=0<br>▽=0                              | GENERAL TOLERANCES (UNLESS SPECIFIED)<br>mm INCH<br>4 PLACES ± --- ± ---<br>3 PLACES ± --- ± ---<br>2 PLACES ± 0.25 ± ---<br>1 PLACE ± 0.25 ± ---<br>ANGULAR ± 3° | DIMENSION STYLE<br>MM ONLY<br>DRAWN BY DATE<br>QLZHANG 2005/04/06<br>CHECKED BY DATE<br>APPROVED BY DATE | SCALE<br>3:1<br>DESIGN UNITS<br>METRIC<br>THIRD ANGLE PROJECTION | TITLE<br>SD/IO CARD CONN.STAND<br>OFF 2.0 MM(LEAD-FREE,<br>PUSH-PUSH & REVERSE) |
|                                                                 |                      | DRAFT WHERE APPLICABLE<br>MUST REMAIN<br>WITHIN DIMENSIONS | MATERIAL NO.<br>SEE SHEET 1                                                                                                                                       | MOLEX INCORPORATED<br>DOCUMENT NO.<br>SD-67955-003                                                       | SHEET NO.<br>2 OF 3                                              |                                                                                 |
|                                                                 |                      | SIZE<br>A3                                                 | THIS DRAWING CONTAINS INFORMATION THAT IS PROPRIETARY TO MOLEX INCORPORATED AND SHOULD NOT BE USED WITHOUT WRITTEN PERMISSION                                     |                                                                                                          |                                                                  |                                                                                 |
|                                                                 |                      |                                                            |                                                                                                                                                                   |                                                                                                          |                                                                  |                                                                                 |

10 9 8 7 6 5 4 3 2 1

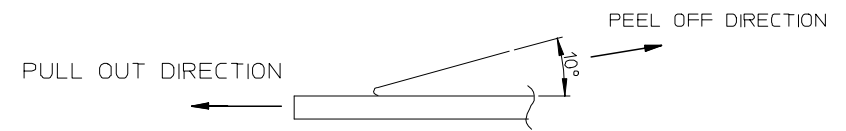


**NOTES**

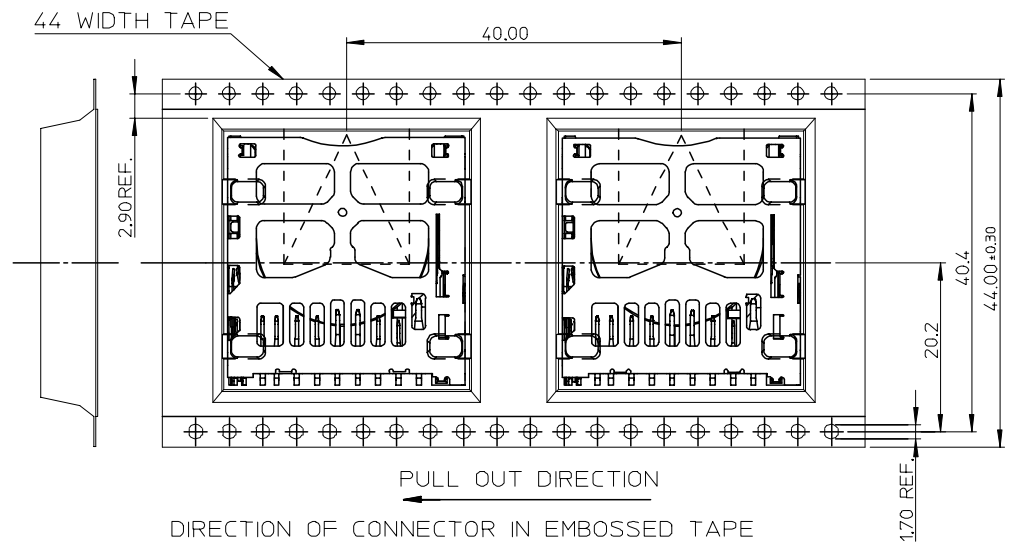
1. NUMBER OF CONNECTORS: 250 PCS/REEL
- 2.



3. PEEL OFF FORCE OF TOP TAPE: 0.1~1.3 N (10.2~130gf)  
PEELING DIRECTION AS SHOWN IN FOLLOWING FIG.)  
(PEEL OFF SPEED: 300mm/min.REF.)



4. PACKAGING DRAWING REFERS TO PK-67955-001.



|             |        |            |                                |                                                                                                                                  |       |                            |              |                        |                                                                        |           |  |
|-------------|--------|------------|--------------------------------|----------------------------------------------------------------------------------------------------------------------------------|-------|----------------------------|--------------|------------------------|------------------------------------------------------------------------|-----------|--|
| NEW RELEASE | EC NO: | 2005/05/12 | QUALITY SYMBOLS<br>▽=0<br>▽C=0 | GENERAL TOLERANCES (UNLESS SPECIFIED)                                                                                            |       | DIMENSION STYLE<br>MM ONLY | SCALE<br>1:1 | DESIGN UNITS<br>METRIC | THIRD ANGLE PROJECTION                                                 |           |  |
|             | DRWN:  | QLZHANG    |                                | 4 PLACES                                                                                                                         | mm    | INCH                       | DRAWN BY     | DATE                   | TITLE                                                                  |           |  |
|             | CHKD:  |            |                                | 3 PLACES                                                                                                                         | ±---  | ±---                       | QLZHANG      | 2005/04/06             | SD/IO CARD CONN.STAND<br>OFF 2.0 MM(LEAD-FREE,<br>PUSH-PUSH & REVERSE) |           |  |
|             | APPR:  |            |                                | 2 PLACES                                                                                                                         | ±0.25 | ±---                       | CHECKED BY   | DATE                   | MOLEX INCORPORATED                                                     |           |  |
|             |        |            | 1 PLACE                        | ±0.25                                                                                                                            | ±---  | APPROVED BY                | DATE         | DOCUMENT NO.           |                                                                        |           |  |
|             |        |            |                                | ANGULAR ± 3 °                                                                                                                    |       | MATERIAL NO.               |              | SD-67955-003           |                                                                        | SHEET NO. |  |
|             |        |            |                                | DRAFT WHERE APPLICABLE<br>MUST REMAIN<br>WITHIN DIMENSIONS                                                                       |       | SEE SHEET 1                |              |                        |                                                                        | 3 OF 3    |  |
|             |        |            |                                | THIS DRAWING CONTAINS INFORMATION THAT IS PROPRIETARY TO MOLEX<br>INCORPORATED AND SHOULD NOT BE USED WITHOUT WRITTEN PERMISSION |       |                            |              |                        |                                                                        |           |  |

9 8 7 6 5 4 3 2 1