

| MATERIAL NUMBER | # OF COLUMNS | # OF DIFF PAIR | DIM "A" MAX | DIM "B" | PTH ϕ |
|-----------------|--------------|----------------|-------------|---------|--------------------|
| 172101-1010 | 10 | 20 | 19.00 | 17.10 | 0.46 ± 0.05 |
| 172101-1016 | 16 | 32 | 30.40 | 28.50 | |
| 172101-1020 | 10 | 20 | 19.00 | 17.10 | 0.39 ± 0.05 |
| 172101-1026 | 16 | 32 | 30.40 | 28.50 | |

172101-*0**

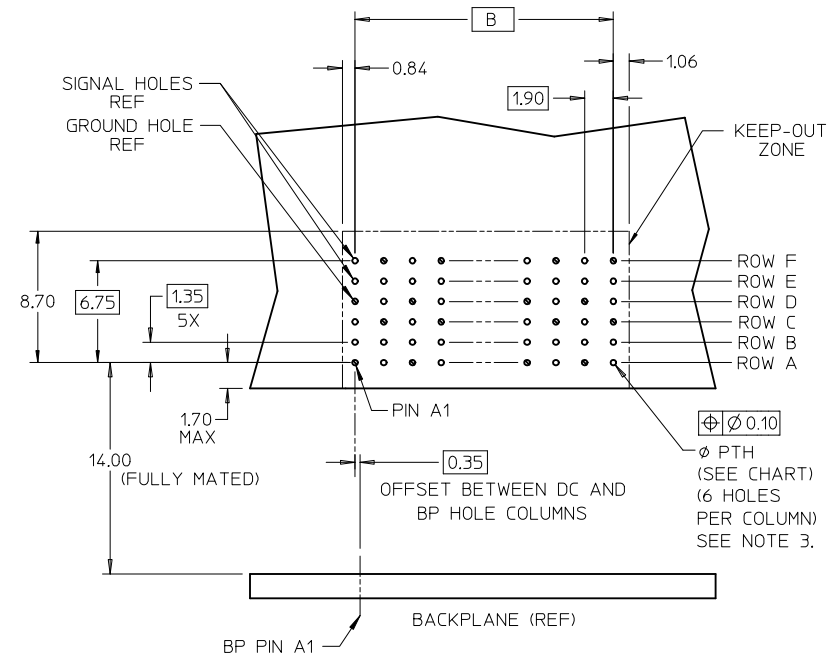
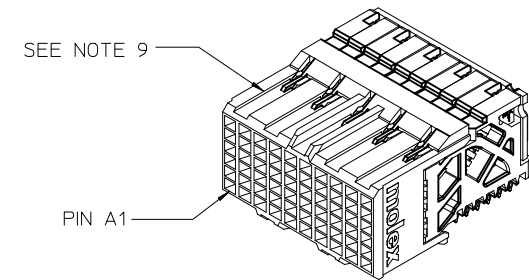
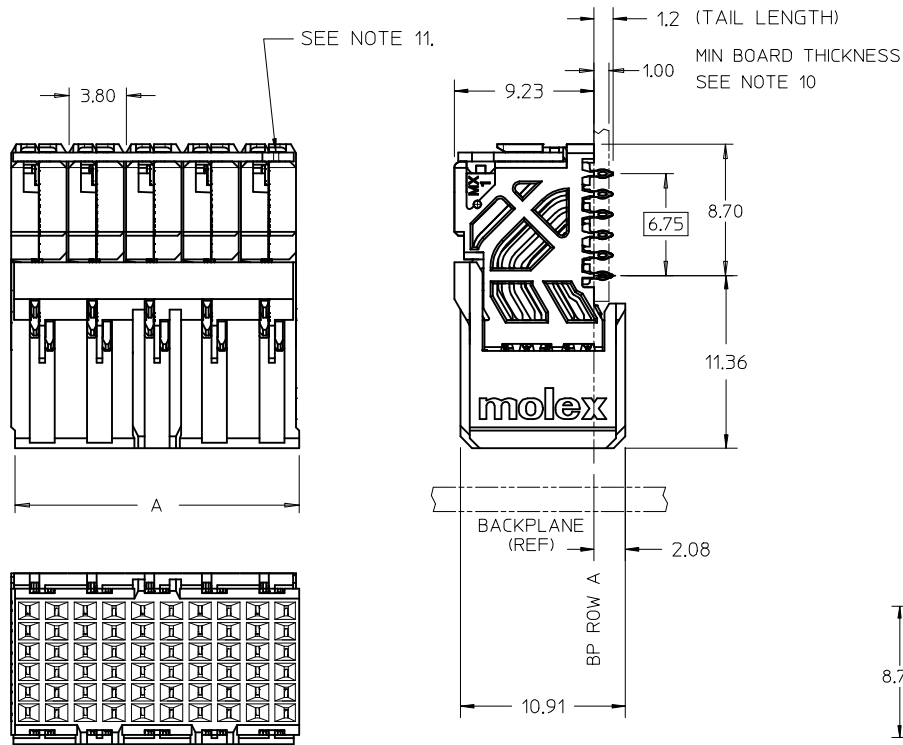
1 = OPEN LEAD-FREE

OF COLUMNS

10 = 10 COL 0.46 PTH
16 = 16 COL 0.46 PTH
20 = 10 COL 0.39 PTH
26 = 16 COL 0.39 PTH

FOR REFERENCE USE ONLY


| | | |
|--|--|---|
| SEE SHEET 1 EC NO: UCP2014-5321 DRAWN: DVARVARA 2014/06/19 CHKD: JGONZALEZ 2014/06/19 APPR: DVARVARA 2014/07/10 1 | DESCRIPTION REV | QUALITY SYMBOLS |
|--|--|---|



DAUGHTERCARD HOLE PATTERN
(CONNECTOR SIDE)

NOTES:

1. MATERIALS: HOUSING - LIQUID CRYSTAL POLYMER (LCP), GLASS-FILLED, UL94V-0
TERMINALS - HIGH PERFORMANCE COPPER ALLOY
2. FINISH: 30µIN SELECTIVE GOLD IN CONTACT AREA, SELECTIVE TIN
ON PCB TAILS, NICKEL OVERALL.
3. REFER TO MOLEX PRODUCT SPEC PS-76060-999 FOR PERFORMANCE SPECIFICATIONS
AND ADDITIONAL PCB INFORMATION.
4. EACH SIGNAL WAFER CONTAINS 2 COLUMNS OF TERMINALS.
5. PRODUCT IS PACKAGED PER PK-70873-592.
6. THIS PART CONFORMS TO CLASS B REQUIREMENTS OF COSMETIC SPEC PS-45499-002.
7. REFER TO MOLEX SALES DRAWING SD-76455-001 FOR THE MATING HEADERS
AND SD-76450-001 FOR MATING RAM.
8. REFER TO MOLEX PCB ROUTING GUIDE AS-76060-990 FOR ANTIPAD AND ROUTING
RECOMMENDATIONS.
9. PART NUMBER 76460-1020 SHOWN ON DRAWING. KEYING FEATURES WILL CHANGE
WITH COLUMN SIZE.
10. MINIMUM BOARD THICKNESS IS 1.60 mm FOR COMPLIANT PIN FUNCTIONALITY.
11. THIS NOTCH IS A DIE NOTCH. IT IS SHOWN TO IDENTIFY IT'S PRESENCE, NOT IT'S POSITION.
(THIS WILL VARY WITH PART LENGTH), IT SERVES NO PURPOSE IN THE FINISHED ASSEMBLY.

| | | | | | | | | | | |
|--|-------------|---|--|--------|----------------------------|--|--|--|--|--|
| ADDED NOTE 11. EC NO: UCP2014-4841 2014/05/20 DRWN:RWHIPPLE 2014/05/20 CHKD:JMORGAN 2014/07/23 APPR:SMILLER | DESCRIPTION | QUALITY SYMBOLS <div>▽=0</div> <div>▽=0</div> <div>▽=0</div> | GENERAL TOLERANCES (UNLESS SPECIFIED) | | DIMENSION STYLE MM ONLY | | SCALE 4:1 | DESIGN UNITS METRIC |  THIRD ANGLE PROJECTION | |
| | | | | mm | INCH | DRAWN BY TELO | DATE 2008/02/20 | TITLE IMPACT 100 OHM DC 2 PAIR SIGNAL MODULE UNGUIDED SALES DRAWING molex | | |
| | | | 4 PLACES | ± --- | ± --- | CHECKED BY JLAURX | DATE 2008/02/20 | | | |
| | | | 3 PLACES | ± --- | ± --- | APPROVED BY JLAURX | DATE 2008/02/20 | | | |
| | | | 2 PLACES | ± 0.13 | ± --- | MATERIAL NO. DOCUMENT NO. SD-76460-001 | | | | |
| | | | 1 PLACE | ± 0.25 | ± --- | | | | | |
| | | | 0 PLACE | ± --- | ± --- | SHEET NO. 1 OF 2 | | | | |
| | | | ANGULAR ±1/2° | | | SEE CHART | | | | |
| | | | DRAFT WHERE APPLICABLE MUST REMAIN WITHIN DIMENSIONS | | | SIZE C | THIS DRAWING CONTAINS INFORMATION THAT IS PROPRIETARY TO MOLEX INCORPORATED AND SHOULD NOT BE USED WITHOUT WRITTEN PERMISSION | | | |

| MATERIAL NUMBER | # OF COLUMNS | # OF DIFF PAIR | DIM "A" MAX | DIM "B" | PTH ϕ |
|-----------------|--------------|----------------|-------------|---------|--------------------|
| 76460-*010 | 10 | 20 | 19.00 | 17.10 | 0.46 ± 0.05 |
| 76460-*016 | 16 | 32 | 30.40 | 28.50 | |
| 76460-*020 | 10 | 20 | 19.00 | 17.10 | 0.39 ± 0.05 |
| 76460-*026 | 16 | 32 | 30.40 | 28.50 | |

76460-*0**

1 = OPEN LEAD-FREE # OF COLUMNS

- 10 = 10 COL 0.46 PTH
- 16 = 16 COL 0.46 PTH
- 20 = 10 COL 0.39 PTH
- 26 = 16 COL 0.39 PTH

| | | | | | | | | | | | | |
|--|-------------|--|--|--------|---|-------------------|--------------|--|------------------------|---------------------|--|--|
| SEE SHEET 1 EC NO: UCP2014-4841 DRWN:RWHIPPLE 2014/05/20 CHKD:JMORGAN 2014/05/20 APPR:SMILLER 2014/07/23 | DESCRIPTION | QUALITY SYMBOLS ▽=0 ▽=0 ▽=0 | GENERAL TOLERANCES (UNLESS SPECIFIED) | | DIMENSION STYLE | | SCALE | DESIGN UNITS | THIRD ANGLE PROJECTION | | | |
| | | | | | MM ONLY | | 4:1 | METRIC | | | | |
| | | | | mm | INCH | DRAWN BY DATE | | TITLE IMPACT 100 OHM DC 2 PAIR SIGNAL MODULE UNGUIDED SALES DRAWING molex | | | | |
| | | | 4 PLACES | ± --- | ± --- | TELO 2008/02/20 | | | | | | |
| | | | 3 PLACES | ± --- | ± --- | CHECKED BY DATE | | | | | | |
| | | | 2 PLACES | ± 0.13 | ± --- | JLAURX 2008/02/20 | | | | | | |
| | | | 1 PLACE | ± 0.25 | ± --- | APPROVED BY DATE | | | | | | |
| | | | 0 PLACE | ± --- | ± --- | JLAURX 2008/02/20 | | DOCUMENT NO. | | SHEET NO. 2 OF 2 | | |
| | | | ANGULAR ±1/2° | | | | MATERIAL NO. | | | | | |
| | | | DRAFT WHERE APPLICABLE MUST REMAIN WITHIN DIMENSIONS | | | | SEE TABLE | | | | | |
| | | | | SIZE | THIS DRAWING CONTAINS INFORMATION THAT IS PROPRIETARY TO MOLEX INCORPORATED AND SHOULD NOT BE USED WITHOUT WRITTEN PERMISSION | | | | | | | |
| | | | | C | SD-76460-001 | | | | | | | |