

DEUTSCH

Hermetic Receptacles



MIL-C-26482 Series 2 Qualified Miniature

Cylindrical • Bayonet Coupling • Solder pot Type, Eyelets,
Extended Pin Terminations

Deutsch high performance metal shelled DBC hermetic receptacles are qualified to Mil-C-26482 Series 2. The Deutsch DBC series intermates with all qualified Series 2 plugs. Qualified receptacles feature Deutsch developed direct glass-to-metal sealing and solder pot or eyelet terminated pin type contacts.

As a major manufacturer of hermetic interconnectors, Deutsch also offers special application receptacles including: socket type contacts, total and patterned bussed contacts and contacts to terminate flex tape and printed circuit boards. Consult factory for the availability of these products.

Vibration

Exceeds requirements of MIL-STD-1344, method 2005 per MIL-C-26482

Physical Shock

No unlocking or electrical discontinuity when tested per MIL-STD-1344, method 2004 at half sine wave of 300 gs

Air Leakage

Less than 0.1 micron cu. ft./hr. at 15 psi differential per MIL-C-26482 and MIL-STD-2002, method 112, condition C, procedure 1

Durability

500 cycles of engagement per MIL-C-26482

Moisture Resistance

Meet all requirements of MIL-C-26482

Temperature

Operative at temperatures from -67°F to +392°F

Corrosion

Exceeds requirements of MIL-STD-1344 method 1001 per MIL-C-26482 using standard plating

Dielectric withstanding Voltage at sea level

#20	Contacts	1,500 VAC rms @ 60 Hz
#16	Contacts	2,300 VAC rms @ 60 Hz
#12	Contacts	2,300 VAC rms @ 60 Hz

Current Rating

#20	Contacts	7.5 amps
#16	Contacts	25 amps
#12	Contacts	40 amps

Contact Resistance

#20	60 mV @ 5 Amps
#16	85 mV @ 10 Amps
#12	85 mV @ 17 Amps

Insulation Resistance

5,000 Meg ohms min @ 75°F per MIL-C-26482

Thermal Shock

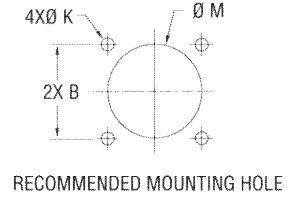
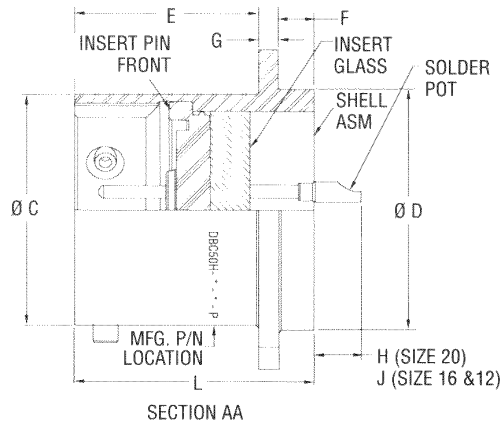
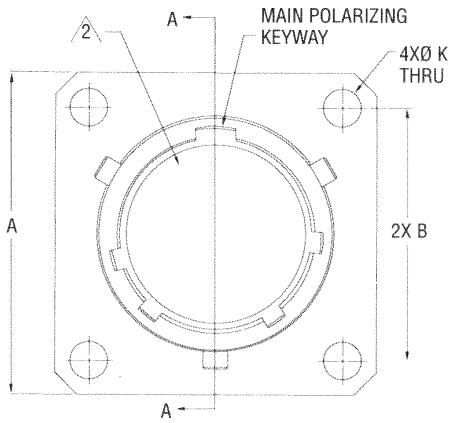
No deterioration or failure after 5 cycles @ -67°F to 392°F

Contact Wire Size

#20	= AWG 20, 22, 24
#16	= AWG 16, 18, 20
#12	= AWG 12 and 14



NARROW FLANGE MOUNT - DBC50H OR DBA50H



PART NUMBER	A MAX.	B± .005	+ .001 C-.005	+ .001 D-.005	E± .010	F± .010	G± .016	H± .030	J± .030	K± .005	L MAX. REF.	+ .010 M-.000	WEIGHT MAX (lb.)
DBC50H - 8 - *P*	.828	.594	.473	.562	.588	.115	.062	.148	.218	.120	.801	.572	.038
DBC50H - 10 - *P*	.954	.719	.590	.672	.588	.115	.062	.148	.218	.120	.801	.682	.044
DBC50H - 12 - *P*	1.047	.812	.750	.781	.588	.115	.062	.148	.218	.120	.801	.791	.052
DBC50H - 14 - *P*	1.141	.906	.875	.906	.588	.115	.062	.148	.218	.120	.801	.916	.070
DBC50H - 16 - *P*	1.234	.969	1.000	1.031	.588	.115	.062	.148	.218	.120	.801	1.041	.085
DBC50H - 18 - *P*	1.328	1.062	1.125	1.156	.588	.115	.062	.148	.218	.120	.801	1.166	.098
DBC50H - 20 - *P*	1.453	1.156	1.250	1.250	.650	.083	.093	.148	.218	.120	.863	1.260	.110
DBC50H - 22 - *P*	1.578	1.250	1.375	1.375	.650	.115	.093	.116	.186	.120	.895	1.385	.150
DBC50H - 24 - *P*	1.703	1.375	1.500	1.500	.650	.115	.093	.116	.186	.147	.895	1.510	.280

1. DIMENSIONS ARE IN INCHES UNLESS OTHERWISE SPECIFIED.

2. INSERT ARRANGEMENT PER MIL-STD-1669.

3. MATES WITH AFD56- *- *S* PLUGS.

4. MATERIAL:
SHELL - MILD-STEEL FOR DBC;
STAINLESS STEEL FOR DBA
INSULATOR - GLASS INSERT
CONTACT - 52 HIGH NICKEL / IRON ALLOY
INSERT PIN FRONT - FLUOROSILICONE

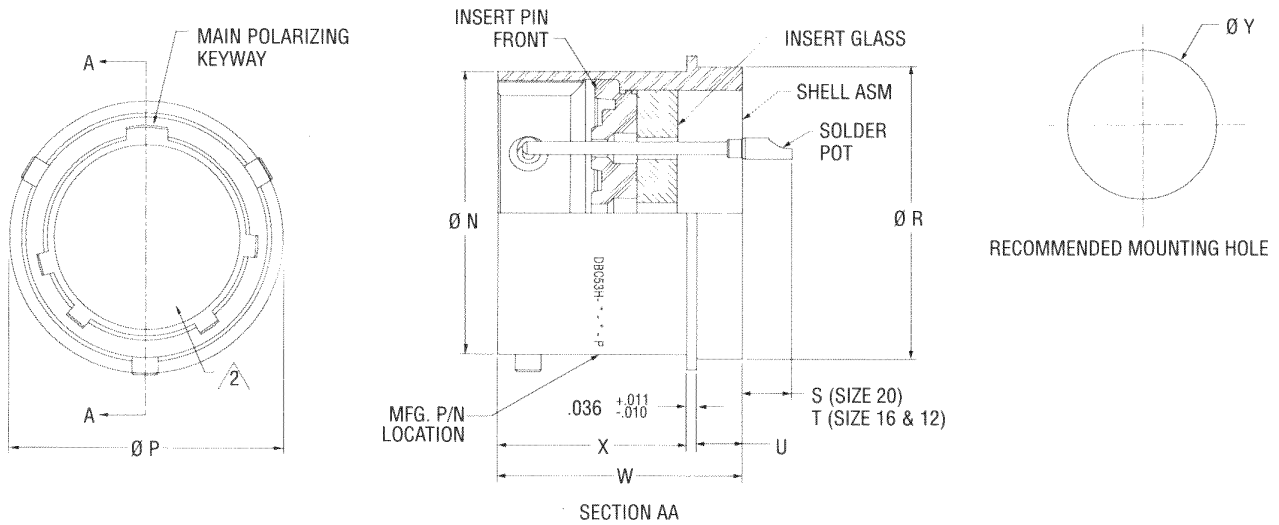
5. FINISH:
SHELL - TIN OVER NICKEL PLATED FOR DBC;
PASSIVATED STAINLESS STEEL FOR DBA
CONTACT - GOLD OVER NICKEL PLATE

6. SHELL DIMENSIONS SHOWN FOR PIN UNIT ONLY

*Information contained herein is for reference only.
Consult factor for new envelope drawings, updated
specifications, and additions to product lines.*



SOLDER MOUNT - DBC53H OR DBA53H



PART NUMBER	+0.001 N-.005	P± .010	+0.001 R-.005	S± .030	T± .030	+0.000 U-.040	W MAX. REF.	X± .010	+0.010 Y-.000	WEIGHT MAX (lb.)
DBC53H - 8 - *P*	.473	.625	.562	.148	.218	.156	.801	.588	.570	.031
DBC53H - 10 - *P*	.590	.750	.672	.148	.218	.156	.801	.588	.680	.034
DBC53H - 12 - *P*	.750	.844	.781	.148	.218	.156	.801	.588	.789	.040
DBC53H - 14 - *P*	.875	.969	.906	.148	.218	.156	.801	.588	.914	.051
DBC53H - 16 - *P*	1.000	1.094	1.031	.148	.218	.156	.801	.588	1.039	.062
DBC53H - 18 - *P*	1.125	1.218	1.156	.148	.218	.156	.801	.588	1.164	.082
DBC53H - 20 - *P*	1.250	1.312	1.250	.148	.218	.156	.863	.650	1.258	.100
DBC53H - 22 - *P*	1.375	1.438	1.375	.116	.186	.188	.895	.650	1.383	.115
DBC53H - 24 - *P*	1.500	1.564	1.500	.116	.186	.188	.895	.650	1.508	.268

SEE NOTES ABOVE

1. DIMENSIONS ARE IN INCHES UNLESS OTHERWISE SPECIFIED.

2. INSERT ARRANGEMENT PER MIL-STD-1669.

3. MATES WITH AFD56-**-S* PLUGS.

4. MATERIAL:
SHELL - MILD-STEEL FOR DBC;
STAINLESS STEEL FOR DBA
INSULATOR - GLASS INSERT
CONTACT - 52 HIGH NICKEL / IRON ALLOY
INSERT PIN FRONT - FLUOROSILICONE

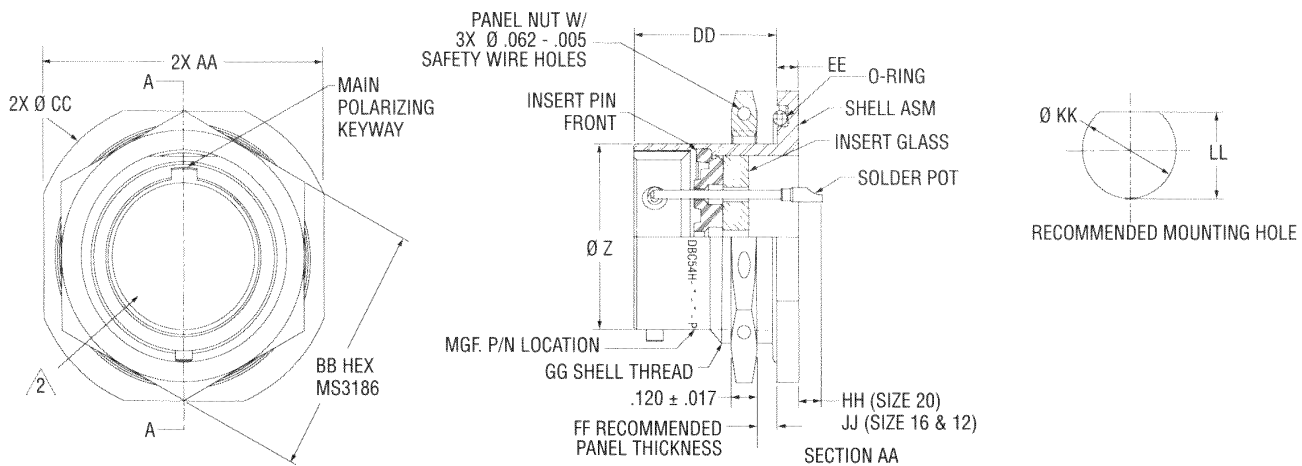
5. FINISH:
SHELL - TIN OVER NICKEL PLATED FOR DBC;
PASSIVATED STAINLESS STEEL FOR DBA
CONTACT - GOLD OVER NICKEL PLATE

6. SHELL DIMENSIONS SHOWN FOR PIN UNIT ONLY

*Information contained herein is for reference only.
Consult factor for new envelope drawings, updated
specifications, and additions to product lines.*



JAM NUT MOUNT - DBC54H OR DBA54H



PART NUMBER	$\pm .001$	AA	BB	CC	DD	EE	FF PANEL THK.		GG THREAD	HH	JJ	$\pm .010$	$\pm .010$	WEIGHT MAX (lb.)
	Z-.005	$\pm .015$	$\pm .017$	$\pm .015$	$\pm .008$	$\pm .008$	MIN	MAX	CLASS 2A	$\pm .030$	$\pm .030$	KK-.000	LL-.000	
DBC54H - 8 - *P*	.473	.938	.750	1.062	.699	.105	.062	.187	.5625 - 24UNEF	.104	.174	.572	.537	.043
DBC54H - 10 - *P*	.590	1.062	.875	1.187	.699	.105	.062	.187	.6875 - 24UNEF	.104	.174	.697	.661	.061
DBC54H - 12 - *P*	.750	1.250	1.062	1.375	.699	.105	.062	.187	.8750 - 20UNEF	.104	.174	.895	.824	.088
DBC54H - 14 - *P*	.875	1.375	1.188	1.500	.699	.105	.062	.187	1.0000 - 20UNEF	.104	.174	1.010	.948	.110
DBC54H - 16 - *P*	1.000	1.500	1.312	1.625	.699	.105	.062	.187	1.1250 - 18UNEF	.104	.174	1.135	1.072	.131
DBC54H - 18 - *P*	1.125	1.625	1.438	1.750	.699	.105	.062	.187	1.2500 - 18UNEF	.104	.174	1.260	1.197	.172
DBC54H - 20 - *P*	1.250	1.812	1.562	1.938	.763	.138	.062	.250	1.3750 - 18UNEF	.069	.139	1.385	1.322	.211
DBC54H - 22 - *P*	1.375	1.938	1.688	2.062	.763	.138	.062	.250	1.5000 - 18UNEF	.069	.139	1.510	1.447	.242
DBC54H - 24 - *P*	1.500	2.062	1.812	2.187	.794	.138	.062	.250	1.6250 - 18UNEF	.069	.139	1.635	1.572	.293

1. DIMENSIONS ARE IN INCHES UNLESS OTHERWISE SPECIFIED.

2. INSERT ARRANGEMENT PER MIL-STD-1669.

3. MATES WITH AFD56-*S* PLUGS.

4. MATERIAL:
SHELL - MILD-STEEL FOR DBC;
STAINLESS STEEL FOR DBA
INSULATOR - GLASS INSERT
CONTACT - 52 HIGH NICKEL / IRON ALLOY
INSERT PIN FRONT - FLUOROSILICONE

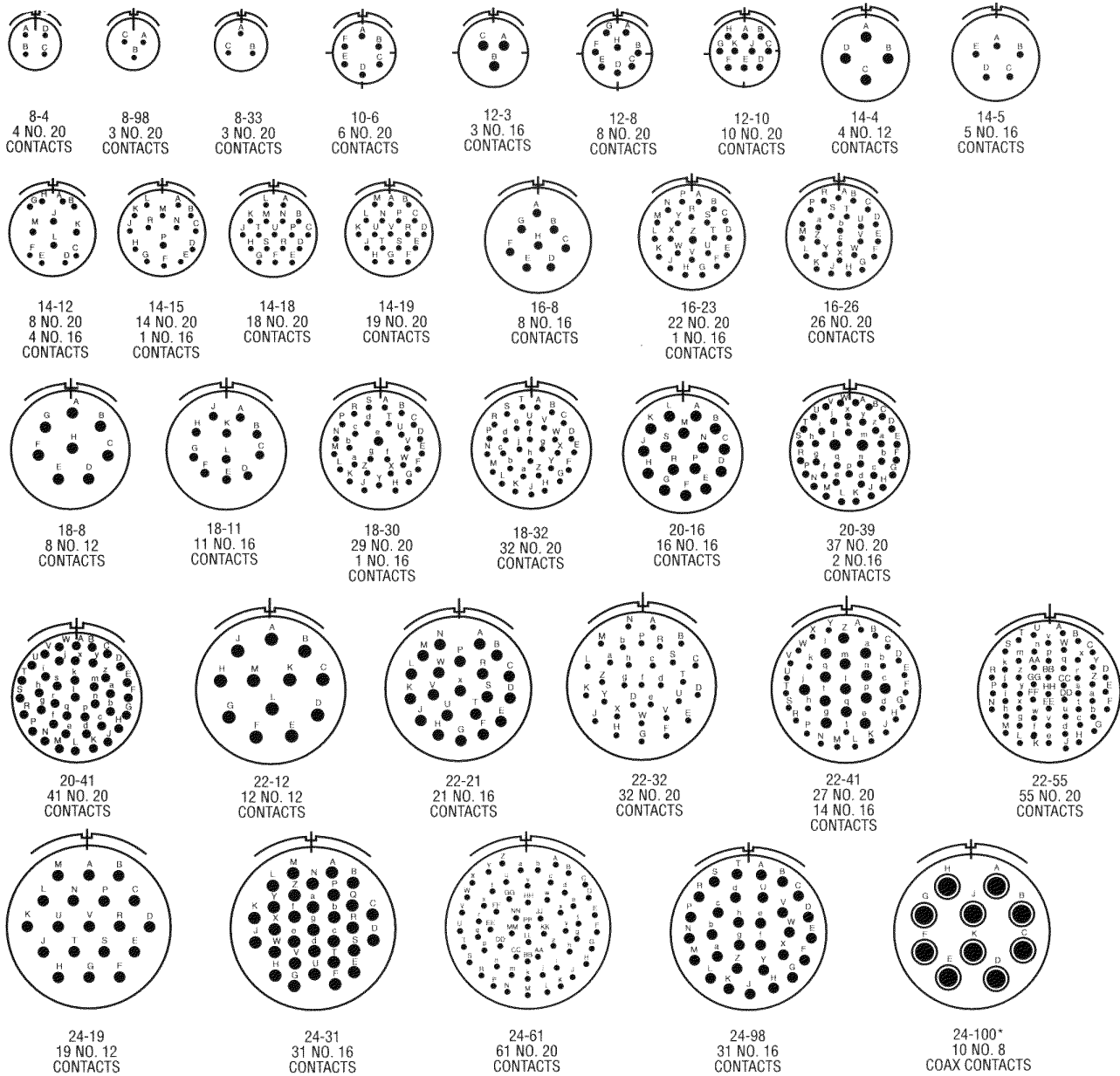
5. FINISH:
SHELL - TIN OVER NICKEL PLATED FOR DBC;
PASSIVATED STAINLESS STEEL FOR DBA
CONTACT - GOLD OVER NICKEL PLATE

6. SHELL DIMENSIONS SHOWN FOR PIN UNIT ONLY

*Information contained herein is for reference only.
Consult factor for new envelope drawings, updated
specifications, and additions to product lines.*



MIL-C-26482 MIL-STD-1669 INSERT ARRANGEMENTS



Insert arrangement shown front face of "pin" style receptacle

ORDERING INFORMATION

DBC 50H - 22 - 55 P N



Information contained herein is for reference only. Consult factor for new envelope drawings, updated specifications, and additions to product lines.

DEUTSCH CONNECTORS
A Step Ahead

Engineered Interconnect Solutions

250 Eddie Jones Way
Oceanside, CA 92054
Telephone (760) 757-7500 • FAX (760) 722-2476
E-mail: astepahead@deutschhpo.com
<http://www.deutscheis.com>