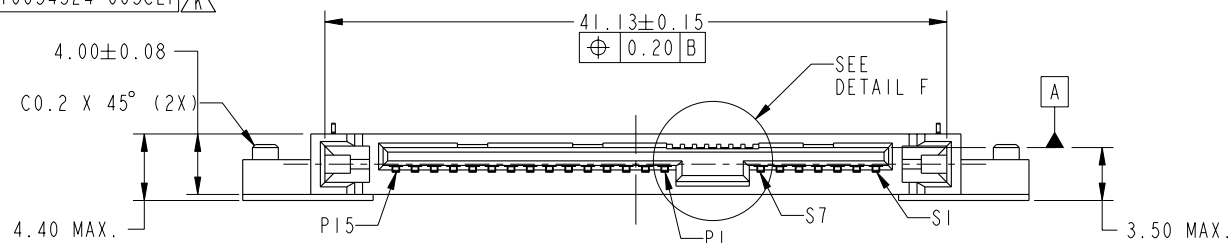
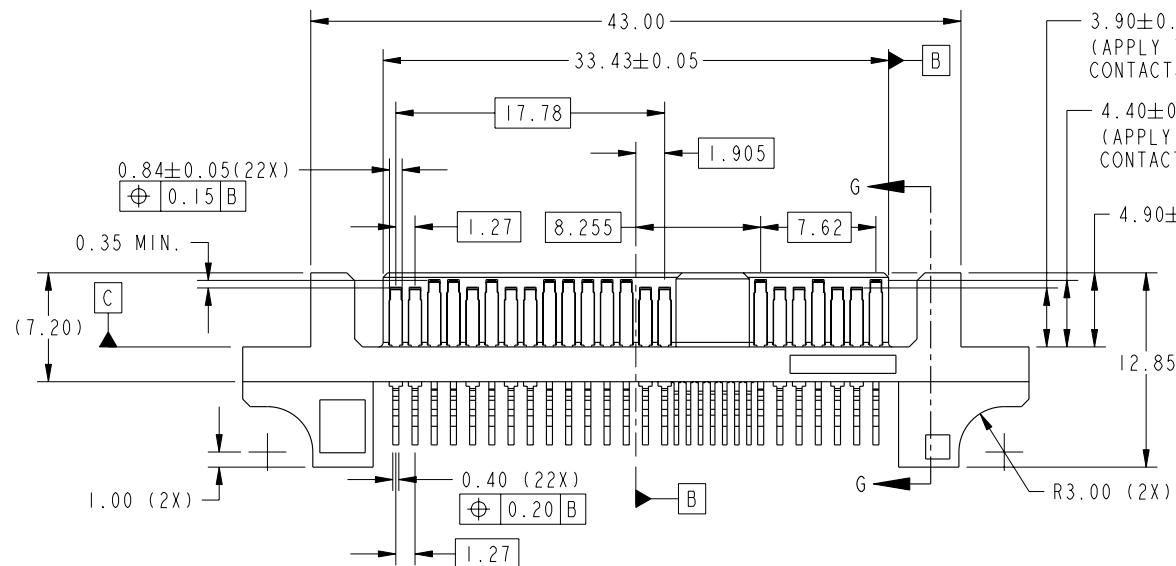


PRODUCT NO.
10034524-001LF
10034524-002LF
10034524-003CLF

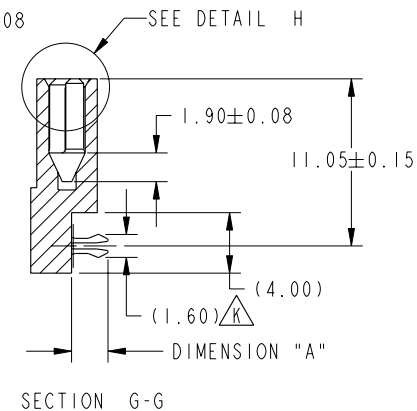
A



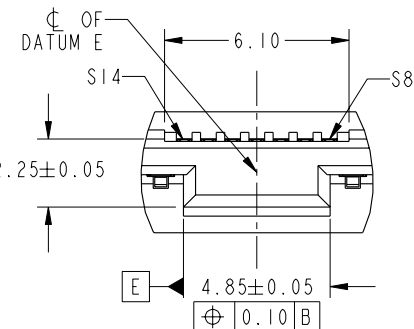
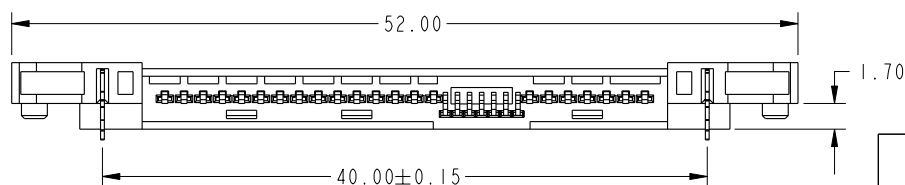
B



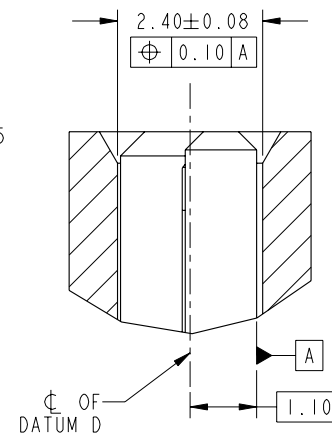
C



D



DETAIL F
SCALE 4:1



DETAIL H
SCALE 8:1



Copyright FCI.

| rev | ecn no | dr | date |
|-----|----------|-----|------------|
| H | S08-0294 | HKL | 2008-09-10 |
| J | S09-0024 | HKL | 2009-01-22 |
| K | S10-0054 | HKL | 2010-03-16 |
| E | S06-0100 | HKL | 2006-05-05 |
| F | S07-0353 | HKL | 2007-10-10 |
| G | S08-0221 | HKL | 2008-07-07 |

| | | | | | | | |
|--------------------|---------|------------|---------------------------------------|--------|---------------|------------|----------|
| www.fciconnect.com | | | surface | ✓ | tolerance std | projection | MM |
| | | | TOLERANCES UNLESS OTHERWISE SPECIFIED | | ASME Y14.5 | size | Scale |
| Dr | SH TAN | 2004-08-19 | ANGULAR | LINEAR | ±0.20 | A4 | 2:1 |
| Eng | HK LIM | 2010-03-16 | 0° ±2° | | | ECN | S10-0054 |
| Chr | HK LIM | 2010-03-16 | Product family | | Spec ref | | |
| Appr | JOEY NG | 2010-03-16 | | | | | |
| FCI | | | title | | dwg no | 10034524 | Rev. |
| | | | SAS PLUG R/A | | | | |
| | | | TYPE ASSY | | | | |
| | | | catalog no | | CUSTOMER | | |
| | | | | | sheet 1 of 3 | | |

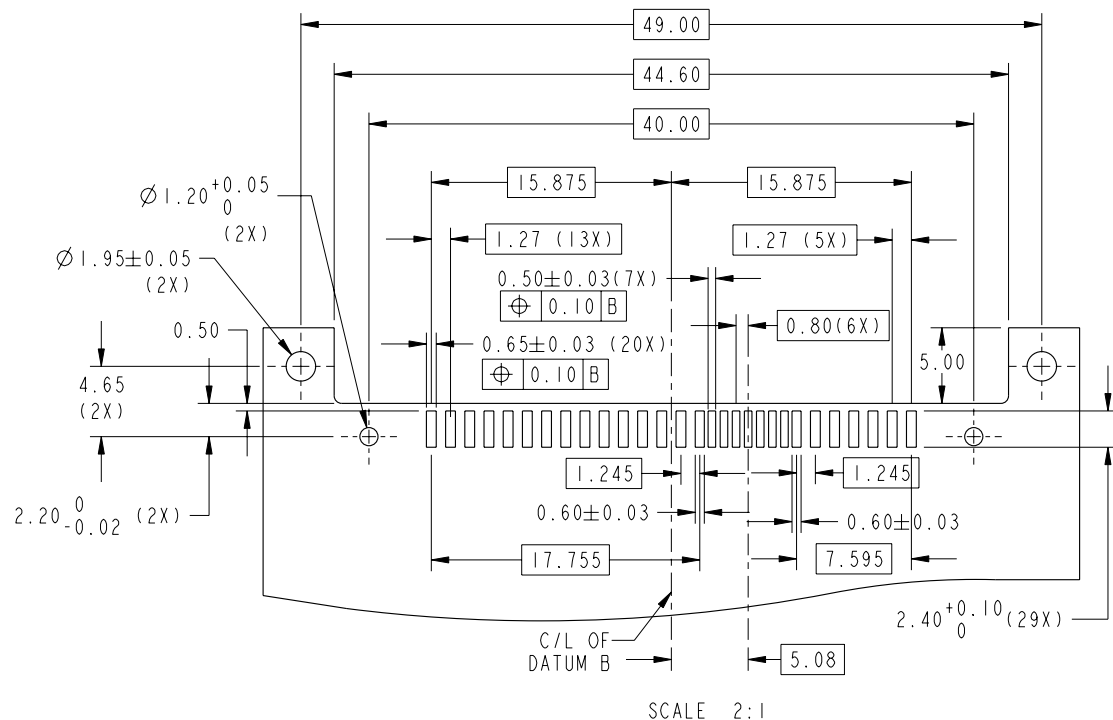
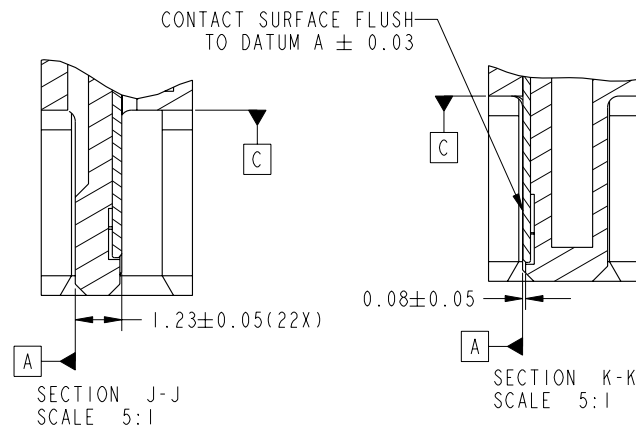
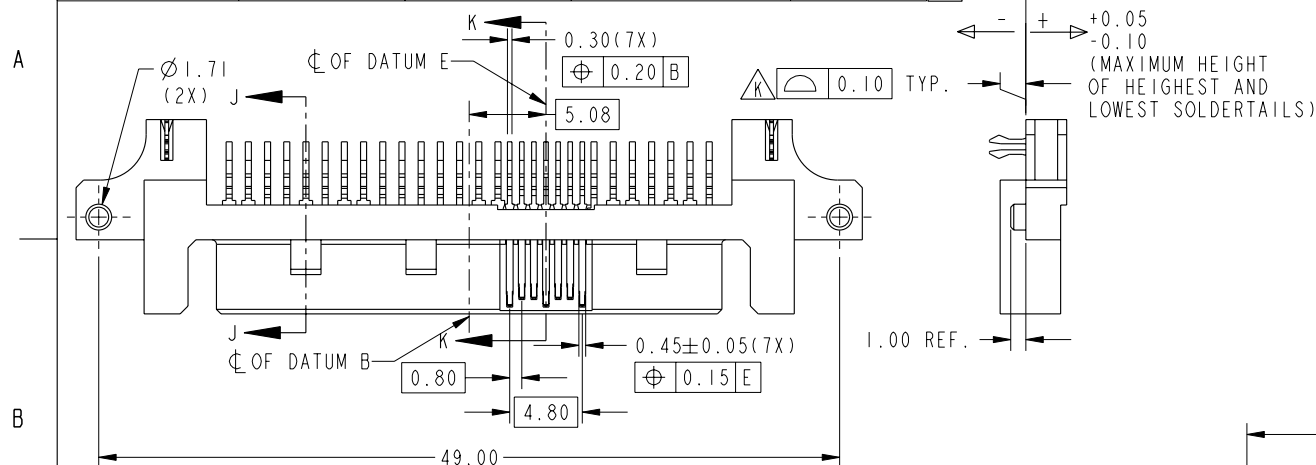
REV E - 2008-03-28

PDM: Rev:K

STATUS Released

4 Printed: Apr 01, 2010

| PRODUCT NO. | PCB THICKNESS | DIMENSION "A" | WITH ADHESIVE TAPE | PACKAGING |
|-----------------|---------------|---------------|--------------------|-------------|
| 10034524-001LF | 1.60 | 2.40±0.15 | NO | TRAY |
| 10034524-002LF | 1.20 | 2.00±0.15 | | |
| 10034524-003CLF | 1.60 | 2.40±0.15 | YES | TAPE & REEL |



RECOMMENDED PAD LAYOUT

NOTES:

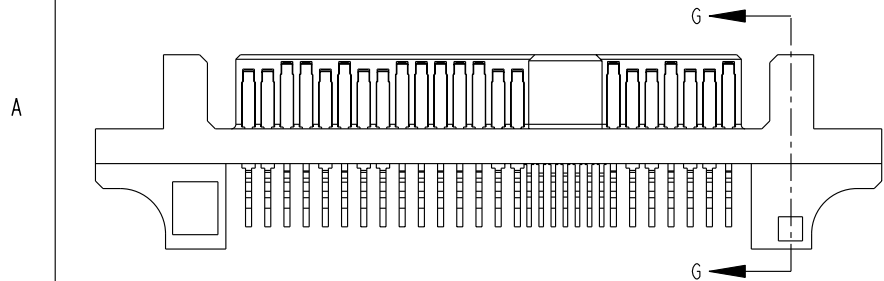
- MATERIAL:
HOUSING: HIGH TEMPERATURE PLASTIC, BLACK, UL94V-0
CONTACT & HOLD DOWN: COPPER ALLOY
TAPE: HIGH TEMPERATURE RESISTANT TAPE
- FINISH:
CONTACT: 1.27um Min. NICKEL UNDERPLATE OVERALL,
1.91um Min. 100% MATTE TIN(LEAD-FREE) ON SOLDER TAIL,
0.76um Min. GOLD ON CONTACT AREA
HOLD DOWN: 1.91um Min. 100% MATTE TIN(LEAD-FREE) OVER
1.27um Min. NICKEL UNDERPLATE OVERALL
- RECOMMENDED PCB THICKNESS: 1.20 & 1.60mm
- THIS PRODUCT MEETS EUROPEAN UNION DIRECTIVES AND OTHER COUNTRY REGULATIONS AS DESCRIBED IN GS-22-008
- THE HOUSING WILL WITHSTAND EXPOSURE TO 260°C PEAK TEMPERATURE FOR 10 SECONDS IN A CONVECTION, INFRA-RED OR VAPOR PHASE REFLOW OVEN
- A SYMBOL \triangleleft WILL BE NEXT TO ANY DIMENSION, VIEW OR NOTE WHICH HAS BEEN MODIFIED WITH THE CURRENT DRAWING REVISION



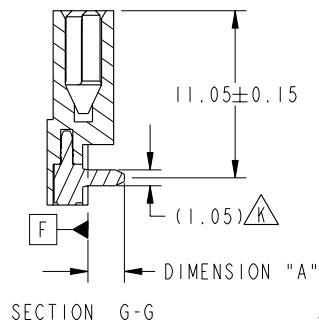
title
SAS PLUG R/A
TYPE ASSY
catalog no

dwg no
10034524
Rev.
K
CUSTOMER
sheet 2 of 3

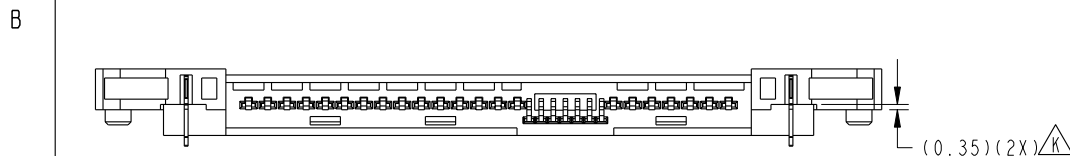
PRODUCT NO.
10034524-003CLF



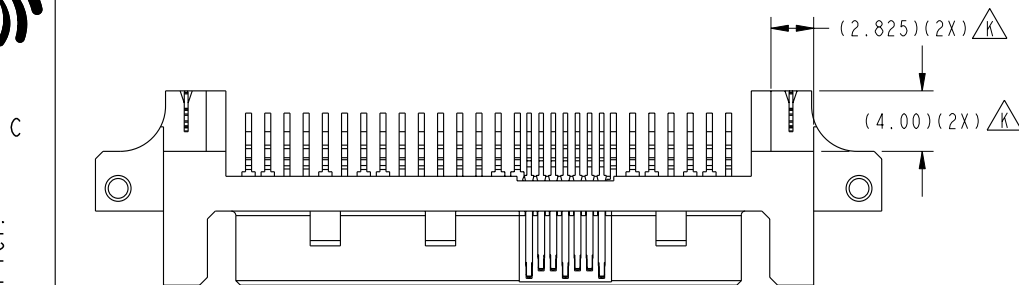
SCALE 2:1



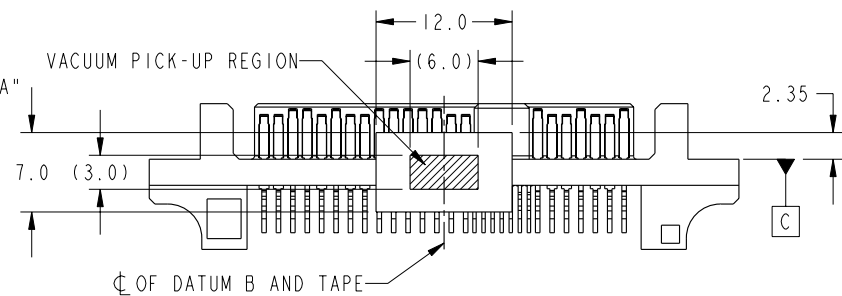
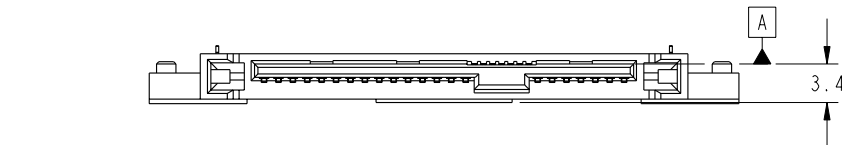
SECTION G-G



(0.35)(2X) K

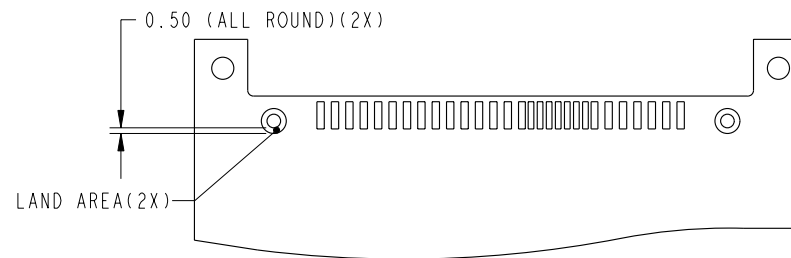


(4.00)(2X) K



SCALE 3:2

WITH ADHESIVE TAPE ATTACHED K



SCALE 3:2

RECOMMENDED PAD LAYOUT FOR 10034524-003 K
(FOR MORE DIMENSIONS, REFER TO PAD LAYOUT FOR
10034524-001/-002)



title
SAS PLUG R/A
TYPE ASSY
catalog no

dwg no
10034524

Rev.
K

CUSTOMER sheet 3 of 3