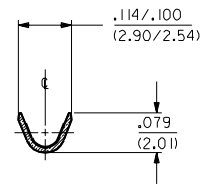
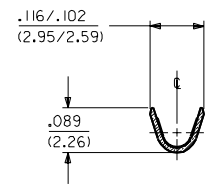
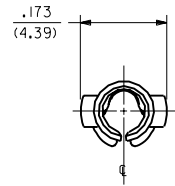


PART NO.	ENG. NO.
02-09-1138	2871-A(P90 I)
02-09-1139	2871-A(P90 I)L
-	-
-	-
-	-



SECTION "A-A" SECTION "B-B"

LEGEND

2871-A(\*\*\*\*)\*

FORM  
BLANK=STD. CHAIN  
L=LOOSE

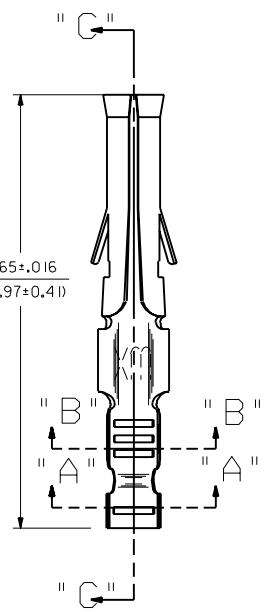
P=PREPLATE  
BLANK=POSTPLATE

FINISH CODE

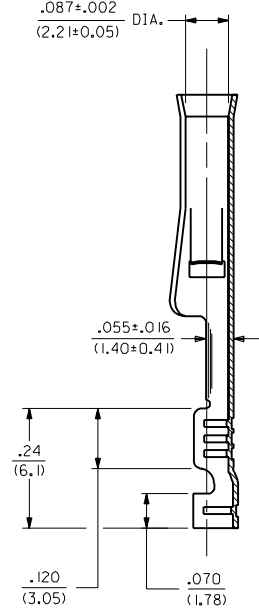
NOTES:

1. TERMINAL FOR USE WITH .093/(2.36) SERIES HOUSINGS AND WILL ACCEPT 22 - 24 AWG WIRE.
2. INSERTION FORCE: 3.5 LBS. MAX. WHEN TERMINAL IS INSERTED INTO AN .093 SERIES HOUSING.
3. CONTACT RETENTION: 20 LBS. MIN. FROM HOUSING.
4. THIS PART CONFORMS TO PRODUCT SPEC. 02-09.

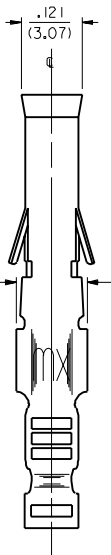
.865±.016  
(21.97±0.41)



.087±.002  
(2.21±0.05) D1A.



.142±.003  
(3.61±0.08)



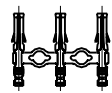
SECTION "C-C"

MATERIAL:  
CARTRIDGE BRASS, ALLOY #C26000,  
.010/(0.25) THICK, SPRING TEMPER

FINISH CODES:

901 HOT TIN DIP .000020/(0.0005) MIN.

CHAIN FORM  
FULL SCALE



B	REVISE PER ECR US 0799 GC 2/14/95	RW
A	FINAL RELEASE ECR US 0857 GC 6/11/92	RW

DIMENSIONS SHOWN METRIC (INCH)		▽ = 0	▽ = 0	REVISE ONLY ON CAD SYSTEM	
UNLESS OTHERWISE SPECIFIED TOLERANCES: ANGULAR ± 1/2°		TITLE CRIMP TERM., FEMALE .093/(2.36) DIA. FOR 22 - 24 AWG WIRE			
3 PLACE ± .010	---	MOLEX INCORPORATED		SHEET NO.	DATE
2 PLACE ± .014	± 0.25	L15LEJLL 60532		1 of 1	6/11/92
1 PLACE ---	± 0.36	U.S.A.		DRAWING NO. SD-2871-*	
DRAFT WHERE APPLICABLE MUST REMAIN WITHIN DIMENSIONS		SEE CHART			
DRAWN BY GWF	CHKD. BY RW	FILE NAME SD2871X1	THIS DRAWING CONTAINS INFORMATION THAT IS PROPRIETARY TO MOLEX INC. AND SHOULD NOT BE USED WITHOUT WRITTEN PERMISSION.		
APP'D.	SCALE 6 : 1	DWG.	CP	SIZE	C