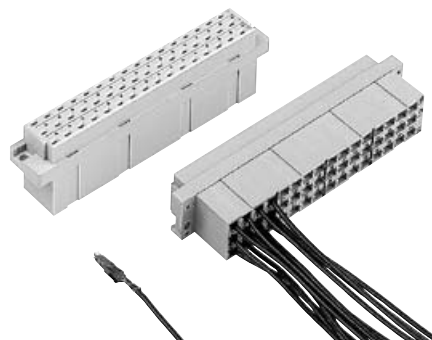


Number of contacts

max. 48



Female connectors

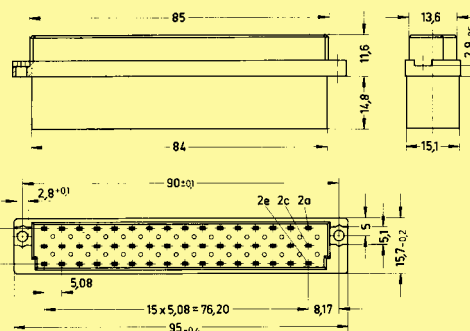
DIN Power
10 6 A

Identification	Number of contacts	Part No.	Drawing	Dimensions in mm
----------------	--------------------	----------	---------	------------------

Female connector for crimp contacts
Order contacts separately

48

09 05 048 3202
09 05 548 3202^{c)}



Contact arrangement View from termination side



Shell housing 09 05 048 0501 see chapter 20

Identification	Identification Wire gauge	Part No.	Performance levels according to IEC 60603-2. Explanation chapter 00
----------------	---------------------------	----------	---

Female crimp FC contacts

Bandoliered contacts (approx. 2,500 pieces)

1
2
3

09 06 000 6484
09 06 000 6481
09 06 000 6482

09 06 000 6474
09 06 000 6471
09 06 000 6472

Bandoliered contacts (approx. 250 pieces)

1
2
3

09 06 000 7484
09 06 000 7481
09 06 000 7482

09 06 000 7474
09 06 000 7471
09 06 000 7472

Individual contacts¹⁾

1
2
3

09 06 000 8484
09 06 000 8481
09 06 000 8482

09 06 000 8474
09 06 000 8471
09 06 000 8472

Female contacts with solder lugs²⁾ (lockable)

09 06 000 6420

FC 1
FC 2
FC 3

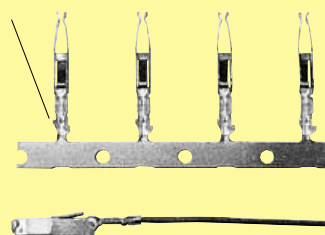
1
2
3

Wire gauge mm ²	AWG	Insulation ø mm
0.09 - 0.25	28 - 24	0.7 - 1.5
0.14 - 0.56	26 - 20	0.8 - 2.0
0.5 - 1.5	20 - 16	1.6 - 2.8

Identification

Bandoliered contacts

Individual contacts



3.5 + 0.5 mm of insulation is stripped from the wires to be crimped

Insertion, removal and crimping tools see chapter 30

^{c)} Connectors with coding see page 02.42

¹⁾ Packaging unit 1,000 pieces

²⁾ Solder contacts must not be used together with shell housing A. Special contact surface: 2 µm gold.