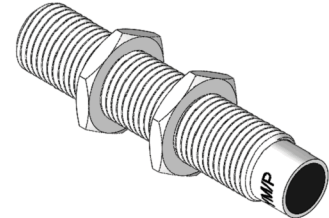
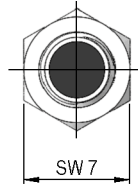
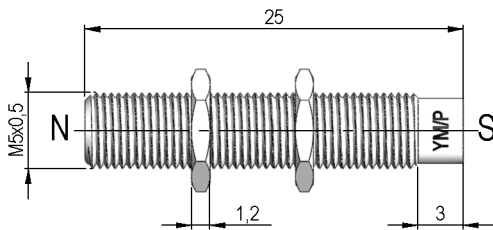


**Dimensions (mm)**  
 tolerances according to DIN ISO 2768-m  
 Toleranzen gem. DIN ISO 2768-m

**Isometric**

Scale 2:1  
 Masstab 2:1



**Marking**

according to EN60062/Factory code  
 gem. EN60062/Fertigungsstätte



Special Product Data	Conditions	Min	Typ	Max	Unit
Sealing compound				Voltatex CE 12 FW-UL	
Housing material				High grade steel 1.4305	

Mag. values DIN IEC 60404-8-	Conditions	Min	Typ	Max	Unit
Remanence Br		1.170	1.210		mT
Coercivity HcB		860	915		kA/m
Coercivity HcJ		1.353			kA/m
Max. operating temperature				120	°C
Magnetic moment	measured with MS150		18		E-6 Vs*cm

General data	Conditions	Min	Typ	Max	Unit
Remarks		All details according to manufacturers information			
Tightening torque	referred to provided screw nuts			2	Nm