

PRODUCT DATA DRAWING

CAD GENERATED DRAWING	DCN CONTROLLED DOCUMENT	DWG. NO. 2902-6005
-----------------------------	-------------------------------	------------------------------

ENG. FILE COPY

MATERIAL:

BODY & COUPLING NUT: STAINLESS STEEL PER AMS-5640, UNS S30300, TYPE I.

CONTACT: BRASS PER ASTM-B-16, ALLOY UNS C36000, H02.

LOCK RING: BERYLLIUM COPPER PER ASTM-B-196, ALLOY C17300, COND. T004.

INSULATOR: TEFLON PER ASTM-D-1457.

GASKET: SILICONE RUBBER PER ZZ-R-765, CLASS IIB, GRADE 50/60.

FINISH:

BODY: GOLD PER MIL-G-45204, TYPE I, GRADE C, CLASS 0; OVER NICKEL PER QQ-N-290, CLASS 2.

COUPLING NUT: GOLD PER MIL-G-45204, TYPE I, GRADE C, CLASS 00; OVER NICKEL PER QQ-N-290, CLASS 1.

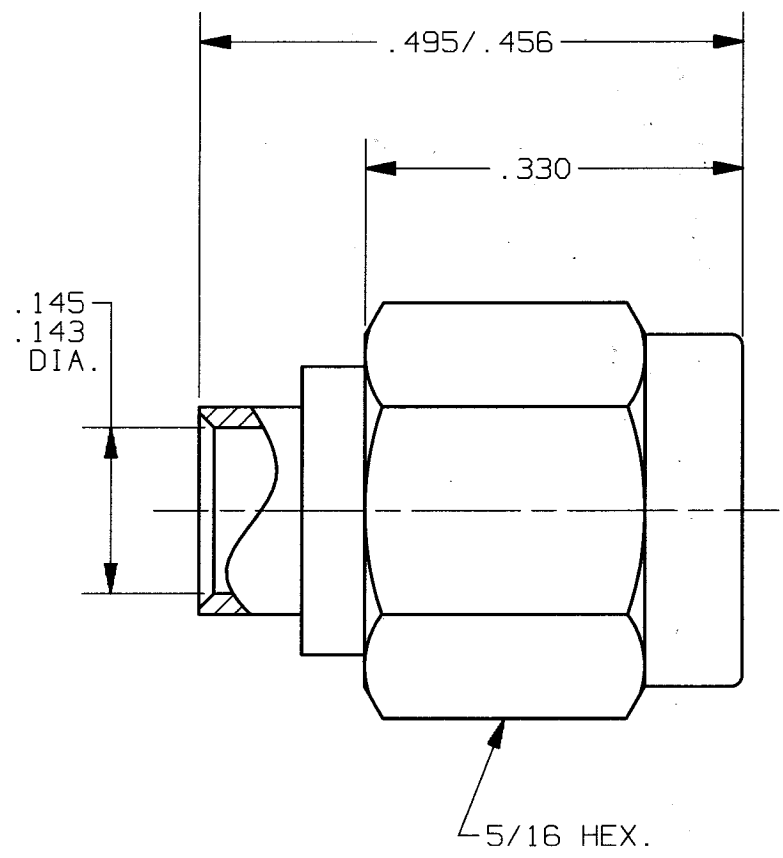
CONTACT: GOLD PER MIL-G-45204, TYPE I, GRADE C, CLASS 1; OVER NICKEL PER QQ-N-290, CLASS 1.

IMPEDANCE: 50 OHMS

FREQ. RANGE: DC-18.0 GHz

D.W.V.: 1500 VRMS

INSUL. RES.: 5000 MEGOHMS MIN.



SYM.	DESCRIPTION	DATE	APPR.	UNLESS OTHERWISE SPECIFIED: 1) ALL DIMENSIONS ARE AFTER PLATING. 2) BREAK CORNERS & EDGES .005 R. MAX. 3) CHAM. 1st & LAST THDS. 4) SURFACE ROUGHNESS 63 √ MIL-STD-10. 5) DIAS. ON COMMON CENTERS TO BE CONCENTRIC WITHIN .005 T.I.R. 6) REMOVE ALL BURRS.	DIMENSIONS ARE IN INCHES TOLERANCES: DECIMALS FRACTIONAL ANGULAR .X ±.030 .XX ±.015 ±1/64 X° ±1°0' .XXX ±.005 X'X' ±15'			Soltron Vector Microwave 3301 ELECTRONICS WAY WEST PALM BEACH, FL. 33407	
E	REV. DCN 22807	8/96	JM		MATERIAL:	SEE ABOVE		TITLE: SMA SOLDER-ON PLUG F/.141 S.R. CABLE	
F	REV. DCN 23364	4/97	AL		FINISH:	SEE ABOVE	AREA:	N/A	
				REDRAWN: BRT, 4/04/97	SIZE	CAGE NO.	SCALE	DWG. NO. 2902-6005	
				CHECKED: ND 10/15/85	A	95077	6X		
				APPROVED: CT 10/16/85					