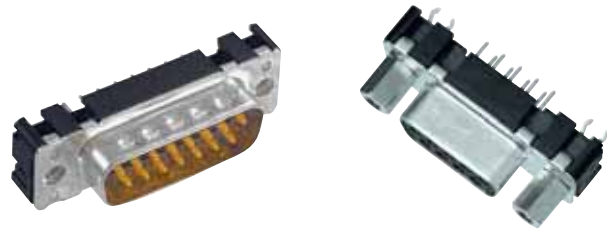


Number of contacts

9-37



Stamped solder pins, straight with/without grounding board locks

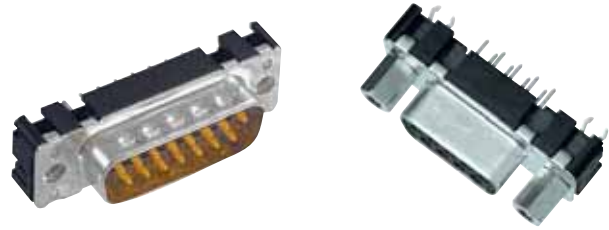
Identification	No. of contacts	Part No.	
Performance levels Explanations see page 05.04 Other performance levels on request		Performance level 3	Performance level 2
Male connector metal shell with dimples			
Without grounding board locks	9	09 65 121 770 .	09 65 121 670 .
	15	09 65 221 770 .	09 65 221 670 .
	25	09 65 321 770 .	09 65 321 670 .
	37	09 65 421 770 .	09 65 421 670 .
With grounding board locks	9	09 65 161 771 .	09 65 161 671 .
	15	09 65 261 771 .	09 65 261 671 .
	25	09 65 361 771 .	09 65 361 671 .
	37	09 65 461 771 .	09 65 461 671 .
Female connector metal shell			
Without grounding board locks	9	09 66 111 750 .	09 66 111 650 .
	15	09 66 211 750 .	09 66 211 650 .
	25	09 66 311 750 .	09 66 311 650 .
	37	09 66 411 750 .	09 66 411 650 .
	50	09 66 511 750 .	09 66 511 650 .
With grounding board locks	9	09 66 151 751 .	09 66 151 651 .
	15	09 66 251 751 .	09 66 251 651 .
	25	09 66 351 751 .	09 66 351 651 .
	37	09 66 451 751 .	09 66 451 651 .
Please insert digit for flange thread or fitted female screw locks			
M3 ▶	1		
4-40 UNC ▶	2		
fitted screw locks 4-40 UNC ▶	3 ¹⁾		

D-Sub

¹⁾ Fitted screw locks 4-40 UNC not normally kept in stock for performance level 3
 Connector dimensions see page 05.09. Mating conditions see page 05.04.

Number of contacts

9-37



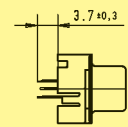
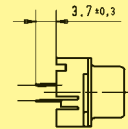
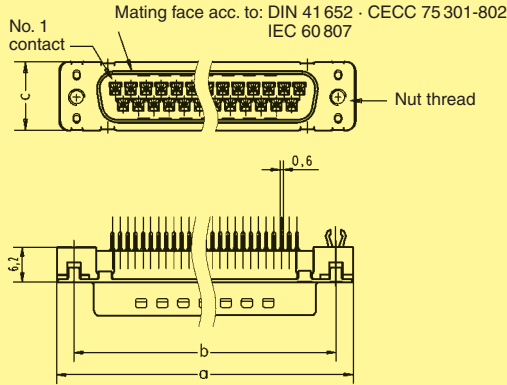
Stamped solder pins, straight with/without grounding board locks

Identification

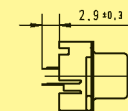
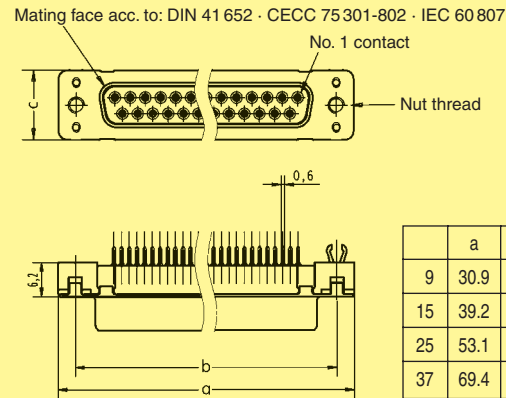
Drawing

Dimensions in mm

Male connector
9 – 37 contacts



Female connector
9 – 37 contacts



	a	b _{±0.1}	c	g	h
9	30.9	25.0	12.5	4 x 2.74 = 10.96	3 x 2.74 = 8.22
15	39.2	33.3	12.5	7 x 2.74 = 19.18	6 x 2.74 = 16.44
25	53.1	47.0	12.5	12 x 2.76 = 33.12	11 x 2.76 = 30.36
37	69.4	63.5	12.5	18 x 2.76 = 49.68	17 x 2.76 = 46.92

Board drillings
9 – 37 contacts

