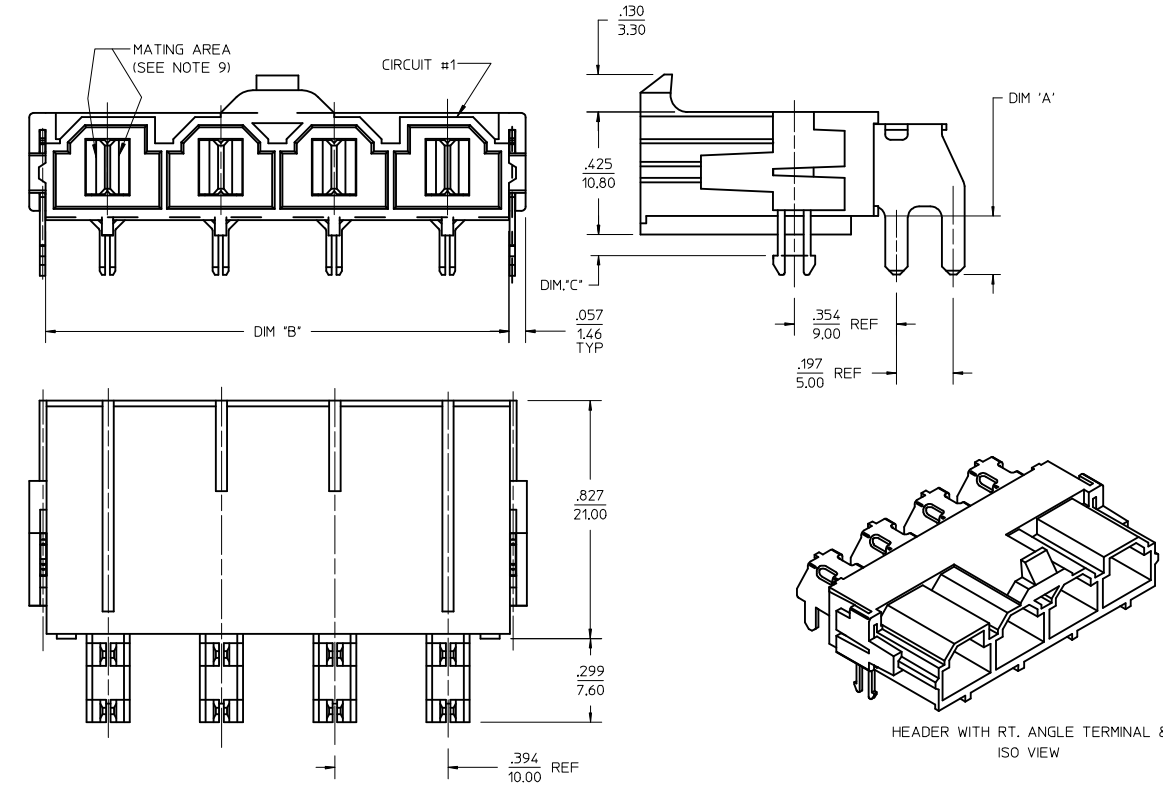
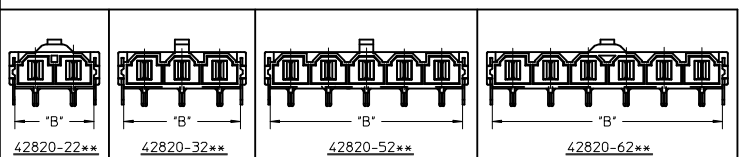


ITEM NUMBER	QKT. SIZE	DIM.'A'	DIM.'B'	DIM.'C'	TERMINAL PLATING	CLIP PLATING	STATUS
J	42820-2213	2	.138/(3.50)	.823/(20.90)	.071/(1.80)		
	42820-2313	2	.138/(3.50)	.823/(20.90)	N/A		
	42820-2223	2	.201/(5.10)	.823/(20.90)	.102/(2.60)		
	42820-2233	2	.201/(5.10)	.823/(20.90)	.134/(3.40)		
	42820-2243	2	.327/(8.30)	.823/(20.90)	.259/(6.58)		
	42820-3213	3	.138/(3.50)	1.217/(30.90)	.071/(1.80)		
	42820-3228	3	.138/(3.50)	1.217/(30.90)	.102/(2.60)		
I	42820-3223	3	.201/(5.10)	1.217/(30.90)	.102/(2.60)		
	42820-3233	3	.201/(5.10)	1.217/(30.90)	.134/(3.40)		
	42820-3243	3	.327/(8.30)	1.217/(30.90)	.259/(6.58)		
	42820-4213	4	.138/(3.50)	1.610/(40.90)	.071/(1.80)		
	42820-4223	4	.201/(5.10)	1.610/(40.90)	.102/(2.60)		
	42820-4233	4	.201/(5.10)	1.610/(40.90)	.134/(3.40)		
	42820-4243	4	.327/(8.30)	1.610/(40.90)	.259/(6.58)		
	42820-5213	5	.138/(3.50)	2.004/(50.90)	.071/(1.80)		
H	42820-5223	5	.201/(5.10)	2.004/(50.90)	.102/(2.60)		
	42820-5233	5	.201/(5.10)	2.004/(50.90)	.134/(3.40)		
	42820-5243	5	.327/(8.30)	2.004/(50.90)	.259/(6.58)		
	42820-6213	6	.138/(3.50)	2.398/(60.90)	.071/(1.80)		
	42820-6223	6	.201/(5.10)	2.398/(60.90)	.102/(2.60)		
	42820-6233	6	.201/(5.10)	2.398/(60.90)	.134/(3.40)		
	42820-6243	6	.327/(8.30)	2.398/(60.90)	.259/(6.58)		
G	42820-2214	2	.138/(3.50)	.823/(20.90)	.071/(1.80)		
	42820-2224	2	.201/(5.10)	.823/(20.90)	.102/(2.60)		
	42820-2234	2	.201/(5.10)	.823/(20.90)	.134/(3.40)		
	42820-2244	2	.327/(8.30)	.823/(20.90)	.259/(6.58)		
	42820-3214	3	.138/(3.50)	1.217/(30.90)	.071/(1.80)		
	42820-3224	3	.201/(5.10)	1.217/(30.90)	.102/(2.60)		
F	42820-3234	3	.201/(5.10)	1.217/(30.90)	.134/(3.40)		
	42820-3244	3	.327/(8.30)	1.217/(30.90)	.259/(6.58)		
	42820-4214	4	.138/(3.50)	1.610/(40.90)	.071/(1.80)		
	42820-4224	4	.201/(5.10)	1.610/(40.90)	.102/(2.60)		
	42820-4234	4	.201/(5.10)	1.610/(40.90)	.134/(3.40)		
	42820-4244	4	.327/(8.30)	1.610/(40.90)	.259/(6.58)		
	42820-5214	5	.138/(3.50)	2.004/(50.90)	.071/(1.80)		
	42820-5224	5	.201/(5.10)	2.004/(50.90)	.102/(2.60)		
	42820-5234	5	.201/(5.10)	2.004/(50.90)	.134/(3.40)		
E	42820-5244	5	.327/(8.30)	2.004/(50.90)	.259/(6.58)		
	42820-6214	6	.138/(3.50)	2.398/(60.90)	.071/(1.80)		
	42820-6224	6	.201/(5.10)	2.398/(60.90)	.102/(2.60)		
	42820-6234	6	.201/(5.10)	2.398/(60.90)	.134/(3.40)		
	42820-6244	6	.327/(8.30)	2.398/(60.90)	.259/(6.58)		

NOTE:
1) MATERIAL:
HOUSING MATERIAL:30% GLASS-FILLED NYLON 4/6, UL94V-0, COLOR: BLACK.
TERMINAL MATERIAL ALLOY 151.
2) FINISH: 2= .000100/(.00254) MIN. TIN OVER .000050/(.00127) MIN. NICKEL.
3= .000030/(.00076) MIN. SELECT GOLD IN CONTACT AREA.
OVER .000050/(.00127) MIN NICKEL.
4= .000100/(.00254) MIN. SELECT SILVER IN CONTACT AREA
.000100/(.00254) MIN. SELECT TIN ON SOLDER TAILS
OVER .000050/(.00127) MIN NICKEL.
3) PRODUCT SPECIFICATION: PS-42815-001.
4) PACKAGING INFORMATION SEE MOLEX PACKING SPEC. PK-42820-910
5) PART MATES WITH MOLEX RECEPTACLE *42816-***2 WITH TPA.
6) PART IS DESIGNED IN METRIC.
7) AN "X" IN FRONT OF THE ITEM NUMBER INDICATES THE PART IS NOT TOOLED.
8) PARTS ARE NOT TO BE MATED OR UNMATED WHILE CIRCUITS ARE LIVE
9) WHEN USING OVERALL TIN PLATED TERMINALS:
FOR APPLICATIONS INVOLVING VIBRATION AND/OR TERMINAL CYCLING, MOLEX STRONGLY
RECOMMENDS THE USE OF NYE LUBRICANT (NYOGEL 760G) ON THE MATING
SURFACES OF THE TERMINAL.
10) PARTS CONFORMS TO CLASS 'B' REQUIREMENTS OF COSMETIC
SPECIFICATIONS PS-45499-002
11) FOR TAPE AND REEL PACKAGING REFER TO PK-45986-004
12) BOARD CLIP HOLE MAY OR MAY NOT BE PLATED, REFER TO CHART
FOR PLATED / UNPLATED CLIPS.
13) REFER AS-42815-001 FOR TIN PLATED TERMINALS RECOMMENDED LUBRICATION PROCEDURE.



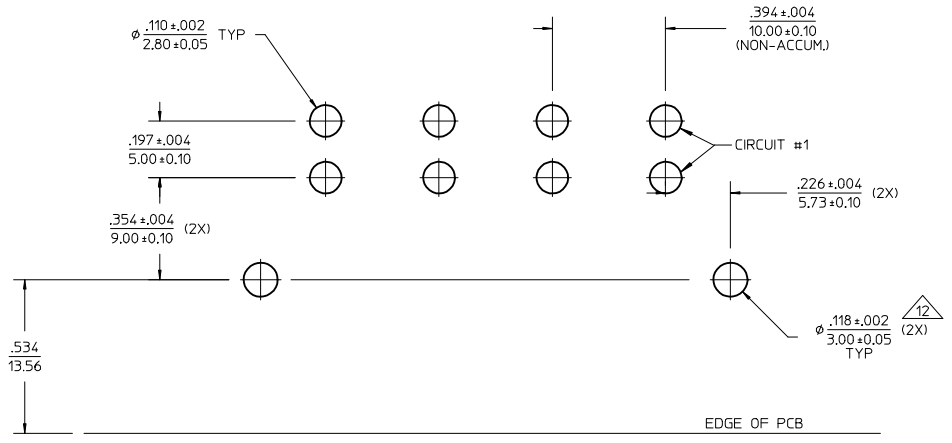
LEGEND :
A-42820 - * * * *
CIRCUIT SIZE (2-6)
MOUNTING OPTION
1 = FLANGES (SEE DWG SDA-42820-***)
2 = RETENTION CLIP
3 = NO RETENTION CLIP
P.C. BOARD THICKNESS
1 = .062/(1.57) NOMINAL
2 = .093/(2.36) NOMINAL
3 = .125/(3.18) NOMINAL
4 = .250/(6.35) NOMINAL
PLATING
2 OR 9 = OVERALL BRIGHT TIN OVER NICKEL
3 OR 8 = SELECT GOLD IN CONTACT AREA
SELECT MATTE TIN ON SOLDER TAILS OVER NICKEL
4 = SELECT SILVER IN CONTACT AREA
SELECT MATTE TIN ON SOLDER TAILS OVER NICKEL



NOTE 11 CALLOUT EC NO: UCP2015-4709 DRAWN: DFOX 2015/05/08 CHKD: BANDESON 2015/05/08 APPR: FSM LTH 2015/06/16	QUALITY SYMBOLS ▽=0 ▽=0 ▽=0	GENERAL TOLERANCES (UNLESS SPECIFIED)		DIMENSION STYLE IN/MM		SCALE 3:1	DESIGN UNITS METRIC	THIRD ANGLE PROJECTION	
		4 PLACES ± --- ± ---	3 PLACES ± --- ± .005	2 PLACES ± 0.13 ± .010	1 PLACE ± 0.25 ± ---	0 PLACE ± --- ± ---	DRAWN BY DATE KSM 1/4/96		CHECKED BY DATE SF 1/4/96
G11	DESCRIPTION	ANGULAR ±1/2°		MATERIAL NO. SEE CHART		DOCUMENT NO. SDA-42820-0002		SHEET NO. 1 OF 2	
		DRAFT WHERE APPLICABLE MUST REMAIN WITHIN DIMENSIONS		SIZE C		THIS DRAWING CONTAINS INFORMATION THAT IS PROPRIETARY TO MOLEX INCORPORATED AND SHOULD NOT BE USED WITHOUT WRITTEN PERMISSION			

ITEM NUMBER	QKT. SIZE	DIM.'A'	DIM.'B'	DIM.'C'	TERMINAL PLATING	CLIP PLATING	STATUS
42820-2212	2	.138/(3.50)	.823/(20.90)	.071/(1.80)	OVERALL BRIGHT TIN	NONE	PLANNED FOR OBSOLESCENCE
42820-2219	2	.138/(3.50)	.823/(20.90)	.071/(1.80)			
42820-2222	2	.201/(5.10)	.823/(20.90)	.102/(2.60)			
42820-2232	2	.201/(5.10)	.823/(20.90)	.134/(3.40)			
42820-2239	2	.201/(5.10)	.823/(20.90)	.134/(3.40)			
42820-2242	2	.327/(8.30)	.823/(20.90)	.259/(6.58)			
42820-3212	3	.138/(3.50)	1.217/(30.90)	.071/(1.80)			
42820-3222	3	.201/(5.10)	1.217/(30.90)	.102/(2.60)			
42820-3229	3	.201/(5.10)	1.217/(30.90)	.102/(2.60)			
42820-3232	3	.201/(5.10)	1.217/(30.90)	.134/(3.40)			
42820-3242	3	.327/(8.30)	1.217/(30.90)	.259/(6.58)			
42820-4212	4	.138/(3.50)	1.610/(40.90)	.071/(1.80)			
42820-4312	4	.138/(3.50)	1.610/(40.90)	N/A			
42820-4222	4	.201/(5.10)	1.610/(40.90)	.102/(2.60)			
42820-4232	4	.201/(5.10)	1.610/(40.90)	.134/(3.40)			
42820-4242	4	.327/(8.30)	1.610/(40.90)	.259/(6.58)			
42820-5212	5	.138/(3.50)	2.004/(50.90)	.071/(1.80)			
42820-5222	5	.201/(5.10)	2.004/(50.90)	.102/(2.60)			
42820-5232	5	.201/(5.10)	2.004/(50.90)	.134/(3.40)			
42820-5242	5	.327/(8.30)	2.004/(50.90)	.259/(6.58)			
42820-6212	6	.138/(3.50)	2.398/(60.90)	.071/(1.80)			
42820-6222	6	.201/(5.10)	2.398/(60.90)	.102/(2.60)			
42820-6229	6	.201/(5.10)	2.398/(60.90)	.102/(2.60)			
42820-6232	6	.201/(5.10)	2.398/(60.90)	.134/(3.40)			
42820-6242	6	.327/(8.30)	2.398/(60.90)	.259/(6.58)			
42820-2332	2	.201/(5.10)	.823/(20.90)	N/A			
42820-2342	2	.327/(8.30)	.823/(20.90)	N/A			

SEE NOTE 11



RECOMMENDED P.C. BOARD PLATED -THRU HOLE LAYOUT
(4 CKT. SHOWN FOR REF.)

SEE SHEET 1 IEC NO: UCP2015-4709 DRWN:JDFOX 2015/05/08 CHKD:ANDERSON 2015/05/08 APPR:FSMITH 2015/06/16	QUALITY SYMBOLS 	GENERAL TOLERANCES (UNLESS SPECIFIED)		DIMENSION STYLE IN/MM		SCALE 3:1	DESIGN UNITS METRIC	THIRD ANGLE PROJECTION	
		4 PLACES ± --- ± ---	mm	INCH	DRAWN BY KSM	DATE 1/4/96	MINI-FIT SR. RIGHT ANGLE HEADER ASSEMBLY 		
		3 PLACES ± --- ±.005			CHECKED BY SF	DATE 1/4/96			
		2 PLACES ±.013 ±.010			APPROVED BY SF	DATE 1/4/96			
1 PLACE ±.025 ± ---			MATERIAL NO.		DOCUMENT NO.		SHEET NO.		
0 PLACE ± --- ± ---			ANGULAR ±1/2°		SDA-42820-0002		2 OF 2		
DRAFT WHERE APPLICABLE MUST REMAIN WITHIN DIMENSIONS		SIZE C		THIS DRAWING CONTAINS INFORMATION THAT IS PROPRIETARY TO MOLEX. INCORPORATED AND SHOULD NOT BE USED WITHOUT WRITTEN PERMISSION					