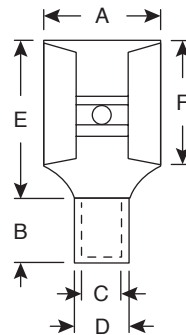
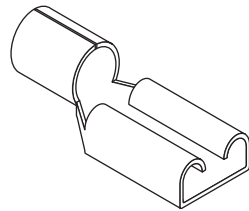


# Terminals

159-1224, 159-1640, 159-1641,  
159-1642, 159-2237, 159-2239A

**KOBI**CONN

Terminals



## SPECIFICATIONS

<b>Type:</b>	Non-Insulated Disconnects
<b>Maximum Voltage:</b>	300V @ 75°C
<b>Terminal Material:</b>	Brass

MOUSER STOCK NO.	Wire Range (AWG)	Max. Electric Current (A)	NEMA Tab	Dimensions: In.						Material Thickness
				A	B	C	D	E	F	
159-1224	12-10	24	.032 x .250	.291	.236	.134	.177	.669	.311	.016
159-1640	16-14	15	.020 x .110	.150	.167	.091	.130	.551	.252	.012
159-1641	16-14	15	.020 x .187	.220	.197	.091	.130	.551	.256	.014
159-1642	16-14	15	.020 x .205	.256	.197	.091	.130	.622	.248	.014
159-2237	22-16	10	.020 x .187	.220	.197	.067	.106	.551	.256	.014
159-2239A	22-16	10	.020 x .205	.258	.197	.067	.106	.622	.248	.014

Date Last Revised: 06-23-05

Available from Mouser Electronics  
1-800-346-6873  
www.mouser.com

KC-300718

159-1224, 159-1640, 159-1641, 159-1642, 159-2237, 159-2239A