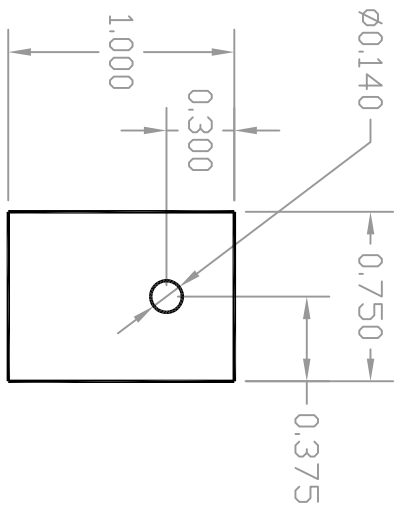


| ITEM# | MATERIAL | ITEM# | MATERIAL |
|------------|-----------------------|------------|-----------------------|
| A15038-001 | T-gard 3000-A0 | A15038-101 | T-gard 3000-A1 |
| A15038-002 | T-gard 500-A0 | A15038-102 | T-gard 500-A1 |
| A15038-003 | T-gard 5000-A0 | A15038-103 | T-gard 5000-A1 |
| A15038-004 | T-gard 210-A0 | A15038-104 | T-gard 210-A1 |
| A15038-005 | T-gard K52-2-0505-A0 | A15038-105 | T-gard K52-2-0505-A1 |
| A15038-006 | T-gard AL52-2-0505-A0 | A15038-106 | T-gard AL52-2-0505-A1 |
| A15038-007 | T-gard 20-A0 | A15038-107 | T-gard 20-A1 |
| A15038-008 | T-gard K52-1-0505-A0 | A15038-108 | T-gard K52-1-0505-A1 |
| A15038-009 | T-gard K52-3-0505-A0 | A15038-109 | T-gard K52-3-0505-A1 |

| REV. LET. | REVISION | ED# | DATE | REV. BY. |
|-----------|-----------------|-----|---------|----------|
| A | INITIAL RELEASE | N/A | 6/22/06 | KB |



USE DIE A41380

| | | | |
|--|--------------|---|---|
| <p>TD-220 STANDARD PARTS</p> | | | |
| DRAWN BY: | DATE: | | |
| KB | 7/12/05 | | |
| SHEET SIZE: | PARTS/SHEET: | | |
| N/A | N/A | | |
| <p>NOTES: DO NOT SCALE DRAWING UNLESS OTHERWISE SPECIFIED. TOLERANCES: ±0.020 IN. (<0.5mm) ADHESIVE TAPE SIDE ALL DIMENSIONS IN INCHES</p> | | <p>ALL DIMENSIONS TO BE INTERPRETED PER LATEST ANSI Y14.5 SPECS</p> | |
| <p>Notice to persons receiving this drawing: Thermagon Inc. claims proprietary rights in the material disclosed hereon. This drawing is issued in confidence for engineering information only and may not be reproduced or used to manufacture anything shown hereon without direct written permission from Thermagon Inc.</p> | | DWG. SIZE | A |
| | | A15038 | |