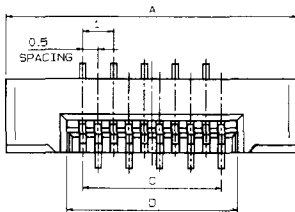


# 0.50mm Pitch

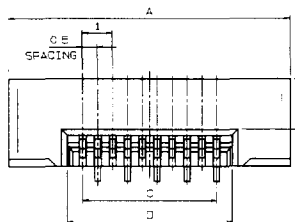
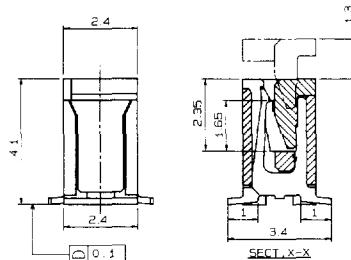
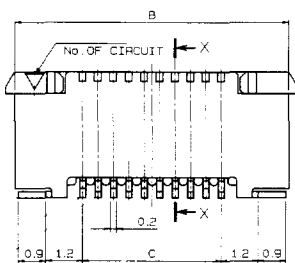
## Series 6214



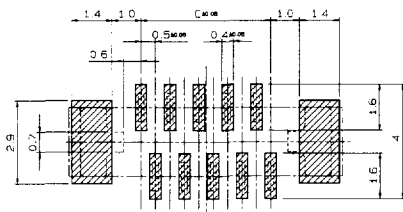
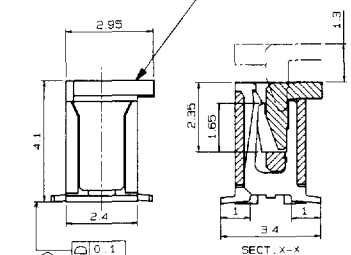
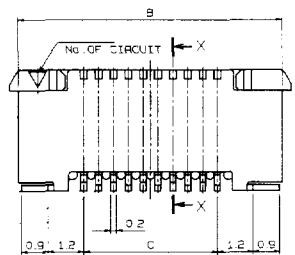
### ZIF Straight SMT



**STANDARD SLIDER**



**EXTENDED SLIDER**  
(Enhances Vacuum Pick-up)



**MOUNTING LAYOUT**

### Specifications

- Number of Contacts – 6-30
- 1000 Connectors per Tape & Reel
- Voltage – 50 V
- Current Rating – 0.4 amp max.
- Dielectric Withstanding Voltage – 200V RMS min.
- Operating Temperature – (-40°C - +85°C)
- Contact Material – phosphor bronze (tin-lead plated)
- Insulator Material – nylon 46, natural color (UL 94 V-O)
- Slider Material – PPS, natural color (UL 94 V-O)
- FFC/FPC Thickness – 0.3 ±0.05 mm (0.012 ±0.002")
- Profile Height – 4.1mm

PART NUMBER	NO. OF CONTACTS	A	B	C	D	QTY. PER REEL
04 6214 006 XXX 800	6	7.5	6.9	2.5	3.6	1000
007	7	8.0	7.4	3.0	4.1	1000
008	8	8.5	7.9	3.5	4.6	1000
009	9	9.0	8.4	4.0	5.1	1000
010	10	9.5	8.9	4.5	5.6	1000
011	11	10.0	9.4	5.0	6.1	1000
012	12	10.5	9.9	5.5	6.6	1000
013	13	11.0	10.4	6.0	7.1	1000
014	14	11.5	10.9	6.5	7.6	1000
015	15	12.0	11.4	7.0	8.1	1000
016	16	12.5	11.9	7.5	8.6	1000
017	17	13.0	12.4	8.0	9.1	1000
018	18	13.5	12.9	8.5	9.6	1000
019	19	14.0	13.4	9.0	10.1	1000
020	20	14.5	13.9	9.5	10.6	1000
021	21	15.0	14.4	10.0	11.1	1000
022	22	15.5	14.9	10.5	11.6	1000
023	23	16.0	15.4	11.0	12.1	1000
024	24	16.5	15.9	11.5	12.6	1000
025	25	17.0	16.4	12.0	13.1	1000
026	26	17.5	16.9	12.5	13.6	1000
027	27	18.0	17.4	13.0	14.1	1000
028	28	18.5	17.9	13.5	14.6	1000
029	29	19.0	18.4	14.0	15.1	1000
04 6214 030 XXX 800	30	19.5	18.9	14.5	15.6	1000

(Dimensions: mm)

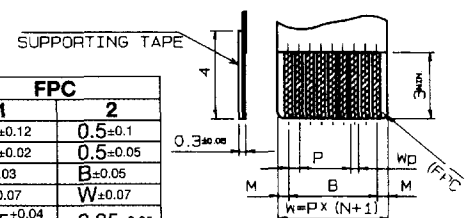
### ORDERING CODE

04 6214 0XX XXX 800

NUMBER OF CONTACTS (06-30)  
 VARIATION CODE  
 000: WITH STANDARD SLIDER  
 010: WITH EXTENDED SLIDER  
 TAPE AND REEL

	FFC		FPC	
	1	2	1	2
M	0.5±0.1	0.5±0.06	0.5±0.12	0.5±0.1
P	0.5±0.03	0.5±0.05	0.5±0.02	0.5±0.05
B	B±0.03	B±0.05	B±0.03	B±0.05
W	W±0.07	W±0.07	W±0.07	W±0.07
Wp	0.3 <sup>+0.05</sup> <sub>-0.02</sub>	0.3 <sup>+0.05</sup> <sub>-0.02</sub>	0.35 <sup>+0.04</sup> <sub>-0.03</sub>	0.35±0.05

### FFC, FPC SPECIFICATION



See page 15 for Tape and Reel detail.