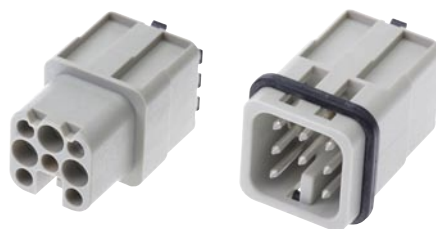

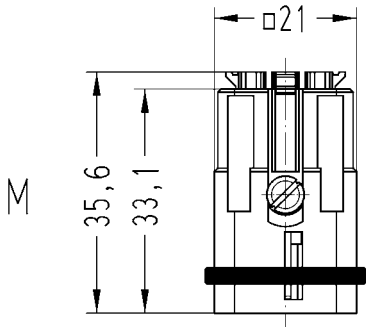
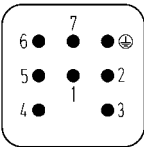

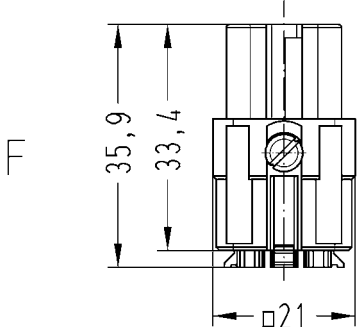
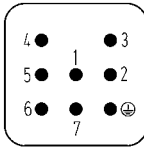


Number of contacts

7 +

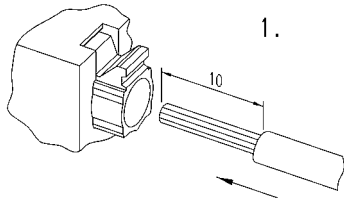


Inserts with Han-Quick Lock® Termination

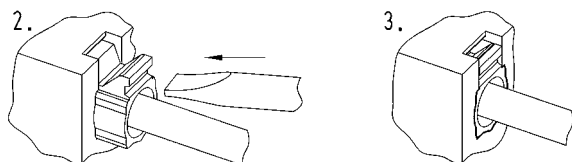
Identification	Part-Number	Drawing	Dimensions in mm
<p>Han® 7 D Quick Lock</p> <p>Male insert</p> 	09 21 007 2632		<p>Contact arrangement view termination side</p> 
<p>Female insert</p> 	09 21 007 2732		

Assembly Manual

Remove cable jacket and strip the fine stranded wires

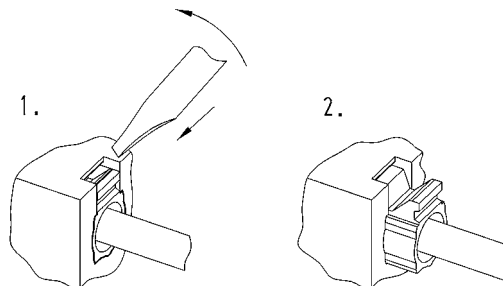


Push fine stranded wires into the Han-Quick Lock® contact and push the black slide with a screw driver¹⁾ until it comes to a stop



Removal Manual

Please insert the screw driver¹⁾ at an angle of 45° into the opening and lever the black slide out



¹⁾ Screw driver: 0.4 x 2.5 mm



Features

- Innovative Han-Quick Lock® termination technology
- Field assembly without special tools
- Compatible with Han® 7 D standard inserts with crimp terminals
- Reduced wiring times
- Insert suitable for plastic hoods and housings using the Han® 3 A size
- Space-saving and compact design
- Leading protective ground contact

Technical characteristics

Specifications	DIN EN 60 644-1 DIN EN 61 984
Inserts	
Number of contacts	7 + PE
Electrical data acc. to DIN EN 61 984	10 A 250 V 4 kV 3
Rated current	10 A
Rated voltage	250 V
Rated impulse voltage	4 kV
Pollution degree	3
Termination	Han-Quick Lock®
Insulation resistance	≥ 10 ¹⁰ Ω
Material insert	Polycarbonate
Material seal	NBR
Limiting temperatures	-40 °C ... +125 °C
Flammability acc. to UL 94	V 0
Mechanical working life	≥ 500 mating cycles
Contacts	
Material	Copper alloy
Surface	
- hard silver plated	3 μm Ag
Contact resistance	≤ 3 mΩ
Han-Quick Lock®	
- mm ²	0.34 – 1.5 mm ²
- AWG	22 – 16
Maximum insulation cross section	ø = 3.0 mm
Plastic hoods/ housings	
Material	Polycarbonate RAL 7032
Locking element	Polyamide RAL 7032
Flammability acc. to UL 94	V 0
Hoods/ housings seal	NBR
Limiting temperatures	-40 °C ... +125 °C
Degree of protection acc. to DIN EN 60 529 in locked position	IP 65

