

**PLEASE CHECK WWW.MOLEX.COM FOR LATEST PART INFORMATION**

**Part Number:** [0357491310](#)  
**Status:** **Active**  
**Description:** Spade Tongue Terminal for 26-30 AWG (0.05~0.13mm<sup>2</sup>), Stud Size 5-6 M3-3.5, Pre Tin-Lead Plated

**Documents:**

[Drawing \(PDF\)](#) [RoHS Certificate of Compliance \(PDF\)](#)  
[Product Specification PS-35749-001 \(PDF\)](#)

**General**

Product Family	Ring and Spade Terminals
Series	<a href="#">35749</a>
Crimp Quality Equipment	Yes
Mil-Spec	N/A
Product Name	N/A
Type	Spade

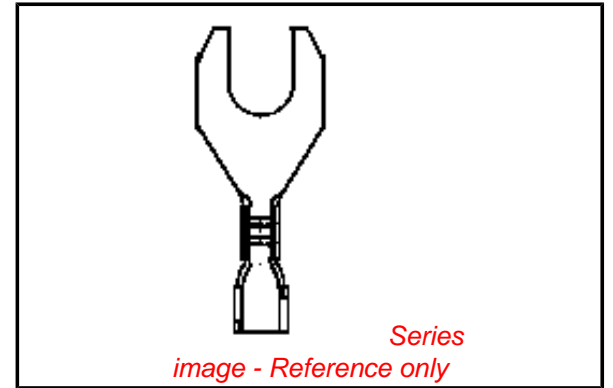
**Physical**

Barrel Type	Open
Insulation	None
Material - Plating Mating	Tin
Packaging Type	Reel
Stud Size	5-6 (M3-3.5)
Wire Insulation Diameter	1.20mm (.047") max., 1.40mm (.055") max.
Wire Size AWG	26, 28, 30
Wire Size mm <sup>2</sup>	0.05 - 0.12

**Material Info**

**Reference - Drawing Numbers**

Product Specification	PS-35749-001
Sales Drawing	SD-35749-1310



**EU RoHS**

**ELV and RoHS Compliant**  
**REACH SVHC**  
**Contains SVHC: No**  
**Halogen-Free**  
**Status**

**China RoHS**



**Halogen-Free**

**Need more information on product environmental compliance?**

Email [productcompliance@molex.com](mailto:productcompliance@molex.com)  
 For a multiple part number RoHS Certificate of Compliance, [click here](#)

Please visit the [Contact Us](#) section for any non-product compliance questions.

**Search Parts in this Series**  
[35749Series](#)

10 9 8 7 6 5 4 3 2 1

F

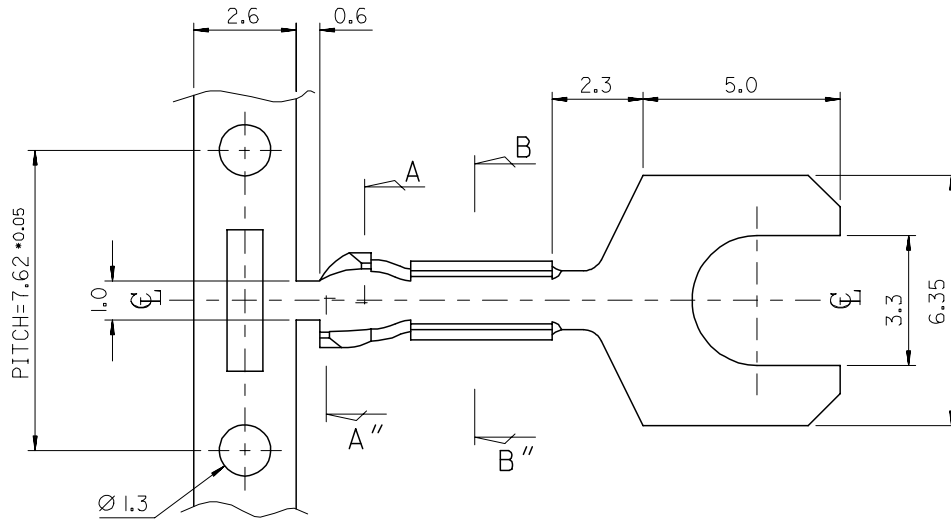
E

D

C

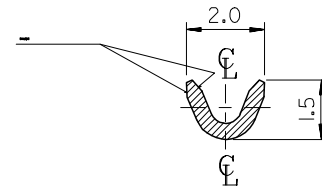
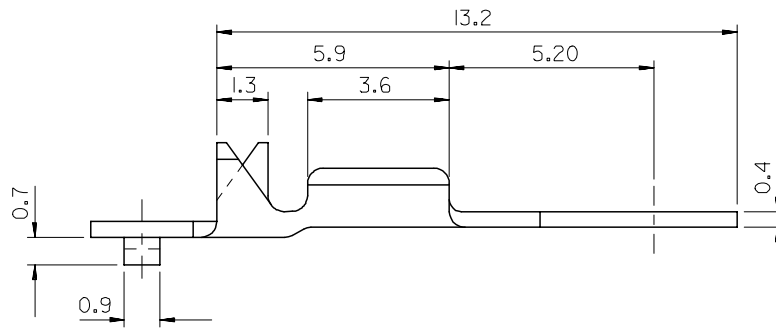
B

A

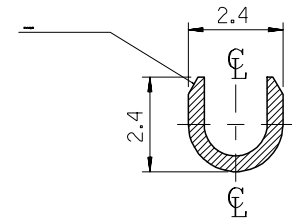


NOTES

1. MATERIAL : BRASS, 0.4mm THICKNESS
2. FINISH : PRE-PLATED TIN
3. RECOMMENDED LENGTH OF WIRE STRIP IS 4.6-5.0mm



SEC' : B-B''



SEC' : A-A''

NEW RELEASED EC NO: KOR2008-0009 DRWN: JHPARK 2007/07/18 CHKD: WYANG 2007/08/20 APPR: YUNSIKKIM 2007/08/20	DESCRIPTION REV	QUALITY SYMBOLS ▽=0 ◻=0	GENERAL TOLERANCES (UNLESS SPECIFIED)		DIMENSION STYLE MM ONLY		SCALE 1:1	DESIGN UNITS METRIC	THIRD ANGLE PROJECTION			
			4 PLACES ± --- ± --- 3 PLACES ± 0.005 ± --- 2 PLACES ± ± --- 1 PLACE ± 0.1 ± ---	mm INCH	DRAWN BY JS.KANG	DATE	TITLE SPADE TERMINAL (D/P)					
			DRAFT WHERE APPLICABLE MUST REMAIN WITHIN DIMENSIONS	ANGULAR ± 1 °		CHECKED BY BK.CHOI	DATE	MOLEX INCORPORATED				
					MATERIAL NO. SD357491310	APPROVED BY	DATE	DOCUMENT NO. SD 35749-1310	SHEET NO. 1 OF 1	THIS DRAWING CONTAINS INFORMATION THAT IS PROPRIETARY TO MOLEX INCORPORATED AND SHOULD NOT BE USED WITHOUT WRITTEN PERMISSION		

9 8 7 6 5 4 3 2 1