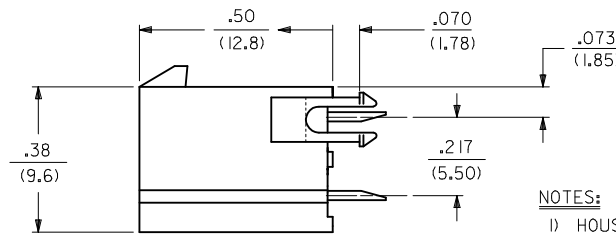
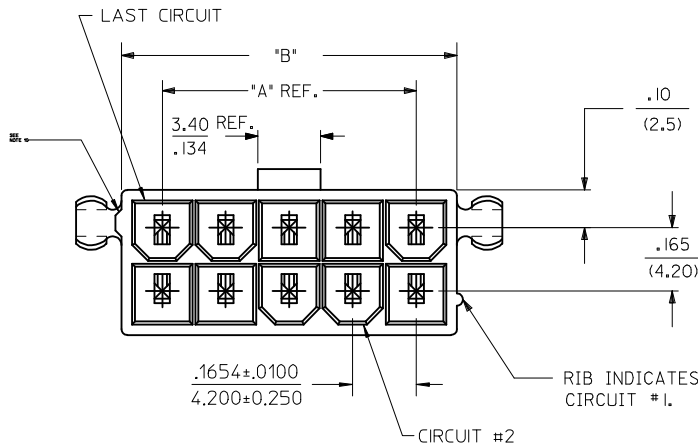
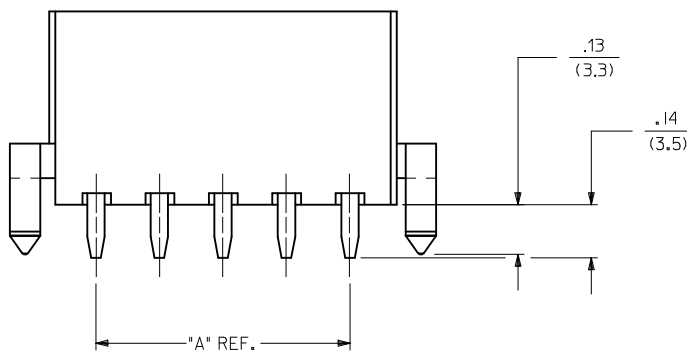


CIRCUIT SIZE	DIM. "A"	DIM. "B"	DIM. "C"
2	—	.21 (5.4)	.370 (9.40)
4	.17 (4.2)	.38 (9.6)	.535 (13.60)
6	.33 (8.4)	.54 (13.8)	.701 (17.80)
8	.50 (12.6)	.71 (18.0)	.866 (22.00)
10	.66 (16.8)	.87 (22.2)	1.031 (26.20)
12	.83 (21.0)	1.04 (26.4)	1.197 (30.40)
14	.99 (25.2)	1.20 (30.6)	1.362 (34.60)
16	1.16 (29.4)	1.37 (34.8)	1.528 (38.80)
18	1.32 (33.6)	1.54 (39.0)	1.693 (43.00)
20	1.49 (37.8)	1.70 (43.2)	1.858 (47.20)
22	1.65 (42.0)	1.87 (47.4)	2.024 (51.40)
24	1.82 (46.2)	2.03 (51.6)	2.189 (55.60)



NOTES:

- HOUSING MATERIAL:  
V-2 = NYLON 6/6, UNFILLED U.L. 94V-2, COLOR: NATURAL.  
V-0 = NYLON 6/6, UNFILLED U.L. 94V-0, COLOR: NATURAL.  
GW V-0 = NYLON UL94V-0, COLOR: BLACK  
IEC 60335-1 4TH EDITION GLOW WIRE CAPABLE  
TERMINAL MATERIAL: COPPER ALLOY.
  - TERMINAL PLATING:  
TIN = .000100/(.00254) MIN. MATTE TIN OVER .000050/(.00127) MIN. NICKEL OVERALL  
GOLD = .000030/(.00080) MIN. SELECT GOLD, .000100/(.00254) MIN. MATTE TIN OVER .000050/(.00127) MIN. NICKEL OVERALL
  - PRODUCT SPECIFICATION: PS-45750-001
  - PACKAGING SPECIFICATION: PK-5566-001.
  - PART MATES WITH MINI-FIT JR. RECEPTACLE NO. 5557.
  - PART ARE NOT TO BE MATED OR UN-MATED WHILE CIRCUITS ARE LIVE.
  - PARTS TO HAVE "HCS+" MARKING
  - PART CONFORMS TO CLASS B OF COSMETIC SPECIFICATION PS-45499-002 WITH THE EXCEPTION OF DISCOLORATION, FLASH, AND SINK MEET CLASS "C" REQUIREMENTS.
  - PART IS NOT DESIGNED FOR CURRENT SHARING.
  - ANTI-SHINGLING RIB MAY OR MAY NOT APPEAR ON HOUSINGS.
- LOCATION OF .118/3.00 DIAMETER HOLES ON P.C. BOARD IS FOR OPTIONAL PEGS.



<b>ADD NOTE 11</b> IEC NO: UCP2014-4789 DRWN: DFOX CHKD: JBELL APPR: FSMITH	2014/06/02 2014/06/02 2014/06/23	DESCRIPTION REV C4	QUALITY SYMBOLS ▽=0 ▽=0 ▽=0	GENERAL TOLERANCES (UNLESS SPECIFIED)		DIMENSION STYLE IN/MM		SCALE 4:1	DESIGN UNITS METRIC	THIRD ANGLE PROJECTION
				mm	INCH	DRAWN BY TGREGORI	DATE 2006/04/27	TITLE <b>VERTICAL HEADER ASSEMBLY DUAL ROW MINI-FIT PLUS HCS SERIES</b> <b>molex</b>		
				4 PLACES ± ---	± ---	CHECKED BY JCOMERCI	DATE			
				3 PLACES ± ---	± .010	APPROVED BY FSMITH	DATE 2010/04/09	MATERIAL NO. <b>SEE TABLE</b>	DOCUMENT NO. SD-46015-001	SHEET NO. 1 OF 2
2 PLACES ± 0.25	± .020	DRAFT WHERE APPLICABLE MUST REMAIN WITHIN DIMENSIONS		THIS DRAWING CONTAINS INFORMATION THAT IS PROPRIETARY TO MOLEX INCORPORATED AND SHOULD NOT BE USED WITHOUT WRITTEN PERMISSION						

13		12		11		10		9		8		7		6		5		4		3		2		1																
ITEM NO.	CKT SIZE	HOUSING MATERIAL	PEGS	PLATING														ITEM NO.	CKT SIZE	HOUSING MATERIAL	PEGS	PLATING																		
46015-0202	2	V-0	NO	TIN	I	I	I	I	I	I	I	I	I	I	I	I	I	46015-1402	14	V-0	NO	TIN	I	I	I															
46015-0203			YES															46015-1403			YES																			
46015-0206			NO															46015-1406			NO																			
46015-0207		YES	46015-1407															YES																						
46015-0211		GW V-0	YES															46015-1409		YES																				
46015-0209			V-0															YES		GOLD																				
46015-0210	GW V-0		YES																																					
46015-0212	V-0	NO	46015-1412	NO																																				
46015-0402	4	V-0	NO	TIN														H	H	H	H	H				H	H	H	H	H	H	H	46015-1602	16	V-0	NO	TIN	H	H	H
46015-0403			YES																														46015-1603			YES				
46015-0406			NO																														46015-1606			NO				
46015-0407		YES	46015-1607																														YES							
46015-0411		GW V-0	YES		46015-1609	YES																																		
46015-0409			V-0		YES	GOLD																																		
46015-0410	GW V-0		YES																																					
46015-0412	V-0	NO	46015-1612	NO																																				
46015-0602	6	V-0	NO	TIN	G	G	G	G	G	G	G	G	G	G	G	G	46015-1802						18	V-0	NO								TIN	G	G	G				
46015-0603			YES														46015-1803								YES															
46015-0606			NO														46015-1806								NO															
46015-0607		YES	46015-1807														YES																							
46015-0611		GW V-0	YES														46015-1809	YES																						
46015-0609			V-0														YES	GOLD																						
46015-0610	GW V-0		YES																																					
46015-0612	V-0	NO	46015-1812	NO																																				
46015-0802	8	V-0	NO	TIN													F	F	F	F	F	F	F	F	F	F	F	F	46015-2002	20	V-0	NO	TIN				F	F	F	
46015-0803			YES																										46015-2003			YES								
46015-0806			NO																										46015-2006			NO								
46015-0807		YES	46015-2007																										YES											
46015-0811		GW V-0	YES		46015-2009	YES																																		
46015-0809			V-0		YES	GOLD																																		
46015-0810	GW V-0		YES																																					
46015-0812	V-0	NO	46015-2012	NO																																				
46015-1002	10	V-0	NO	TIN	E	E	E	E	E	E	E	E	E	E	E	E													46015-2202	22	V-0	NO	TIN	E	E	E				
46015-1003			YES																										46015-2203			YES								
46015-1006			NO																										46015-2206			NO								
46015-1007		YES	46015-2207																										YES											
46015-1011		GW V-0	YES														46015-2209	YES																						
46015-1009			V-0														YES	GOLD																						
46015-1010	GW V-0		YES																																					
46015-1012	V-0	NO	46015-2212	NO																																				
46015-1202	12	V-0	NO	TIN													D	D	D	D	D	D	D	D	D	D	D	D	46015-2402	24	V-0	NO	TIN				D	D	D	
46015-1203			YES																										46015-2403			YES								
46015-1206			NO																										46015-2406			NO								
46015-1207		YES	46015-2407																										YES											
46015-1211		GW V-0	YES		46015-2409	YES																																		
46015-1209			V-0		YES	GOLD																																		
46015-1210	GW V-0		YES																																					
46015-1212	V-0	NO	46015-2412	NO																																				

SEE SHEET 1 EC NO: UCP2014-4789 DRWN: DFOX CHKD: JBELL APPR: FSMITH	REV C4	DESCRIPTION QUALITY SYMBOLS ▽=0 ▽=0 ▽=0	GENERAL TOLERANCES (UNLESS SPECIFIED)		DIMENSION STYLE IN/MM		SCALE 1:1	DESIGN UNITS METRIC	THIRD ANGLE PROJECTION	
			4 PLACES ± --- ± ---	DRAWN BY TGREGORI	DATE 2006/04/27	TITLE VERTICAL HEADER ASSEMBLY DUAL ROW MINI-FIT PLUS HCS SERIES <b>molex</b>				
			3 PLACES ± --- ± .010	CHECKED BY JCOMERC I	DATE					
			2 PLACES ± 0.25 ± .020	APPROVED BY FSMITH	DATE 2010/04/09	MATERIAL NO.		DOCUMENT NO.		SHEET NO.
1 PLACE ± 0.50 ± ---		DRAFT WHERE APPLICABLE MUST REMAIN WITHIN DIMENSIONS		SEE CHART		SD-46015-001		2 OF 2		
0 PLACE ± --- ± ---		ANGULAR ±1/2°		SIZE C		THIS DRAWING CONTAINS INFORMATION THAT IS PROPRIETARY TO MOLEX INCORPORATED AND SHOULD NOT BE USED WITHOUT WRITTEN PERMISSION				