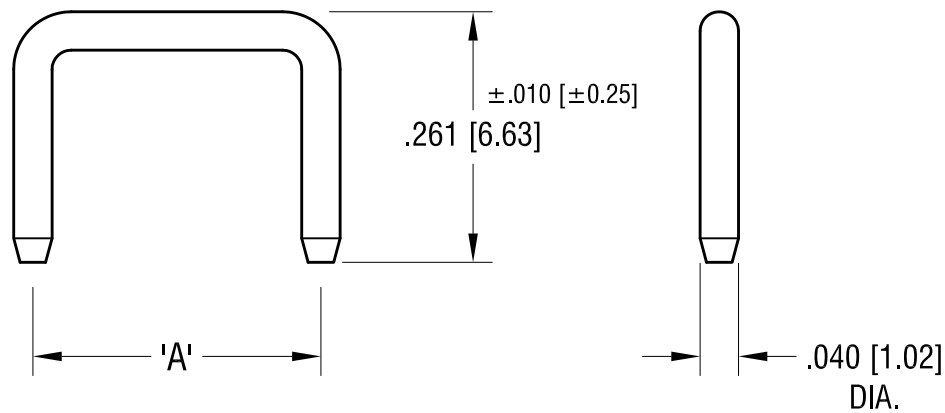


THIS DOCUMENT IS THE PROPERTY OF
KEYSTONE ELECTRONICS CORP. AND
SHALL NOT BE REPRODUCED, DISTRIBUTED
OR USED AS A BASIS FOR MANUFACTURE
WITHOUT PRIOR WRITTEN PERMISSION
FROM KEYSTONE ELECTRONICS CORP.

ACTUAL SIZE
P/N 1430-2



PART NO.	'A' MTG. CTRS
1430-1	.200 [5.08]
1430-2	.250 [6.35]
1430-3	.300 [7.62]
1430-4	.400 [10.16]
1430-5	.500 [12.70]

KEYSTONE ELECTRONICS CORP.

www.keyelco.com • ASTORIA, N.Y. 11105-2017 • Tel (718) 956-8900

PART NAME

NON-INSULATED SHORTING PIN

MATERIAL

.040 [1.02] DIA. BRASS

FINISH

GOLD FLASH

DRN BY

BOONE

DATE

4.2.07

APP'D

LN

SCALE

5X

12.05.13 CHANGE AS PER ECN 13-108

A

TOLERANCES

INCH [MM]

DECIMAL ± .005 [± 0.13]

ANGULAR ± 1°
UNLESS OTHERWISE SPECIFIED

CODE

C

DWG NO.

1430-

DATE

DESCRIPTION

REV.

Mouser Electronics

Authorized Distributor

Click to View Pricing, Inventory, Delivery & Lifecycle Information:

[Keystone Electronics:](#)

[1430-5](#)