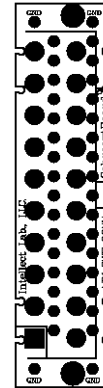
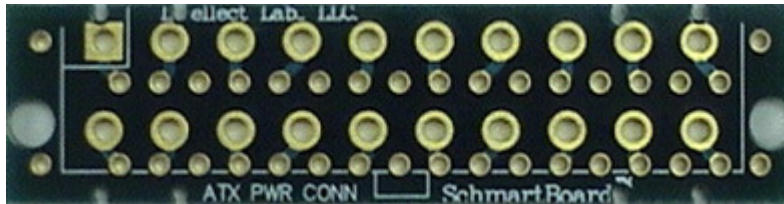


201-0102-01 Through Hole ATX Power Connector Board



Actual Size



0.5" X 2" Through Hole ATX Power Connector Board

Supports 1 piece ATX 20 pins power connector. 10 ground holes are connected a copper plane on the bottom side. This board utilizes Schmartboard's mechanical bridge technology that allows you to connect boards together as needed.

Related Part Numbers:

910-0102-01: 10 Pack of 201-0102-01 Schmartboards

Schmartboardlez Through Hole Family



Schmartboard, Inc.
37423 Fremont Blvd.
Fremont, CA 94536

510-744-9900(P)
510-744-9909(F)
<http://www.schmartboard.com>
<http://www.facebook.com/Schmartboard>
<http://www.twitter.com/Schmartboard>

Mouser Electronics

Authorized Distributor

Click to View Pricing, Inventory, Delivery & Lifecycle Information:

[SchmartBoard:](#)

[201-0102-01](#)