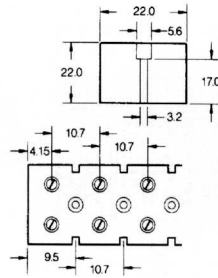


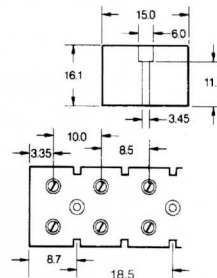
Direct Mount Terminals

Feed Through

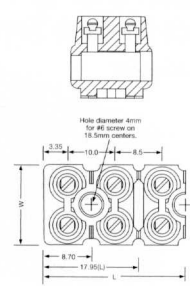
EKS 12/4



MK 3

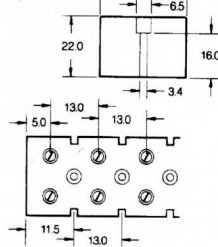


MK 3

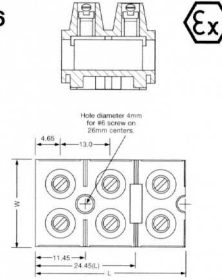


Technical Data		UL	CSA	VDE	UL	CSA	VDE
Rated voltage		300 V	300 V	500 V	300 V	300 V	300 V
Rated current		20 A	20 A	24 A	20 A	25 A	24 A
Wire size	AWG	#22...12	#22...12	2.5 mm ²	#22...12	#22...12	#22...12
Insulation stripping length	mm (in.)	5 (.20)	5 (.20)	5 (.20)	5 (.20)	5 (.20)	5 (.20)
Torque	Nm (lb. in.)	.9 (8.0)	.9 (8.0)	.9 (8.0)	.9 (8.0)	.9 (8.0)	.9 (8.0)
Number of poles		12	12	12	12	12	12
Molding material		Polyamide (white)	Melamine	Polyamide			
Terminal Strips		Type	Length mm (in.)	Part No.	Type	Length mm (in.)	Part No.
12 pole		EKS 12/4	126 (4.96)	0623500000	MK 3/12	109.9 (4.33)	0243520000
Cutoffs							
2 pole		EKS 2/4	20.2 (.795)	0624500000	MK 3/2	17.95 (.707)	0273820000
3 pole		EKS 3/4	30.9 (1.22)	0624400000	MK 3/3	27.20 (1.07)	0273920000
4 pole		EKS 4/4	41.6 (1.64)	0624300000	MK 3/4	36.45 (1.44)	0274020000
5 pole		EKS 5/4	52.3 (2.06)	0624200000	MK 3/5	45.70 (1.80)	0274120000
6 pole		EKS 6/4	63.0 (2.48)	0624100000	MK 3/6	54.95 (2.16)	0274220000
7 pole		EKS 7/4	73.7 (2.90)	0624000000	MK 3/7	64.20 (2.53)	0274320000
8 pole					MK 3/8	73.45 (2.89)	0274420000
9 pole							
10 pole					MK 3/10	91.95 (3.62)	0274620000
11 pole		EKS 11/4	116.5 (4.59)	0623600000	MK 3/11	101.2 (3.98)	0274720000

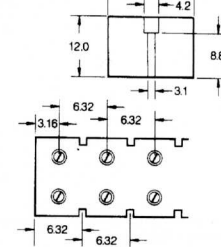
MK 6



MK 6



MK 10*



Technical Data		UL	CSA	VDE	UL	CSA	VDE	UL	CSA	VDE
Rated voltage		300 V	300 V	690 V	300 V	300 V	690 V	150 V	125 V	125 V
Rated current		30 A	40 A	41 A	30 A	40 A	41 A	25 A	25 A	24 A
Wire size	AWG	#22...10	#22...12	6 mm ²	#22...12	#22...10	6 mm ²	#22...12	#24...12	2.5 mm ²
Insulation stripping length	mm (in.)	9 (.35)	9 (.35)	9 (.35)	9 (.35)	9 (.35)	9 (.35)	6 (.24)	6 (.24)	6 (.24)
Torque	Nm (lb. in.)	2.3 (20)	2.3 (20)	2.3 (20)	2.3 (20)	2.3 (20)	2.3 (20)	.45 (40)	.45 (40)	.45 (40)
Number of poles		6	6	6	6	6	6	14	14	14
Molding material		Melamine	Melamine	Polyamide	Melamine	Melamine	Polyamide	Polyamide	Polyamide	Polyamide
Terminal Strips		Type	Length mm (in.)	Part No.	Type	Length mm (in.)	Part No.	Type	Length mm (in.)	Part No.
6 pole		MK 6/6	75 (2.95)	0620120000	MK 6/6	74.90 (2.95)	0620160000	MK 10/14	88.50 (3.48)	0370160000
Cutoffs										
2 pole		MK 6/2	24.45 (.963)	0620420000	MK 6/2	24.45 (.963)	0620460000	MK 10/2	25.28 (.995)	0448660000
3 pole		MK 6/3	37.45 (1.47)	0620320000	MK 6/3	37.45 (1.47)	0620360000	MK 10/3	31.61 (1.24)	0448760000
4 pole		MK 6/4	50.45 (1.99)	0620220000	MK 6/4	50.45 (1.99)	0620260000	MK 10/4	37.93 (1.49)	0448860000
5 pole								MK 10/5	44.25 (1.74)	0448960000
6 pole		MK 6/6	75 (2.95)	0620120000	MK 6/6	74.90 (2.95)	0620160000	MK 10/6	50.57 (1.99)	0449060000
8 pole								MK 10/8	63.21 (2.49)	0449260000
9 pole								MK 10/9	69.54 (2.74)	0449360000
10 pole								MK 10/10	75.86 (2.99)	0449460000
12 pole								MK 10/12	88.50 (3.48)	0449660000
								Mounting holes provided on cutoffs only		
					MK 6/2/E	24.45 (.963)	7906220000			
					MK 6/3/E	37.45 (1.47)	7906230000			
					MK 6/4/E	50.45 (1.99)	7906240000			
					MK 6/5/E	63.45 (2.50)	7906250000			
					MK 6/6/E	74.90 (2.95)	7906260000			
		BSTb 17/6	0304600000		BSTb 17/6	0304600000				

- 2 pole (ATEX certified)††
- 3 pole (ATEX certified)††
- 4 pole (ATEX certified)††
- 5 pole (ATEX certified)††
- 6 pole (ATEX certified)††

*Can be mounted using glue or with M3 x 12 screws through the terminal screw hole. Cutoff versions provide mounting holes.

††See Appendix pages 250-255 for additional information.