

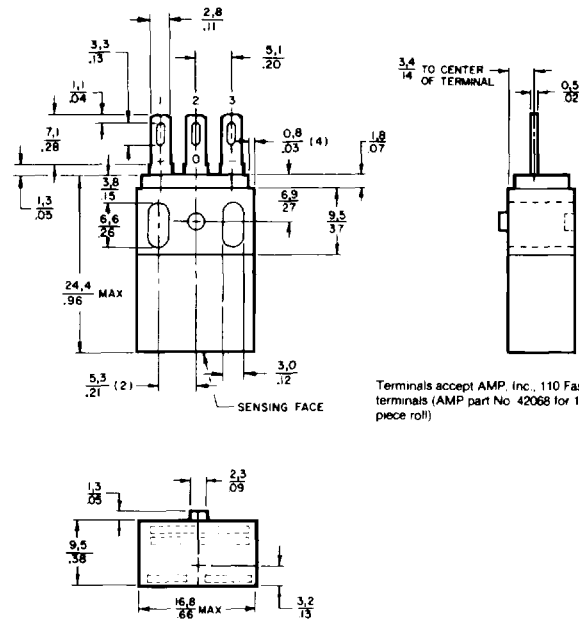
# Solid State Sensors

## Digital Position Sensors

400SR Series



### MOUNTING DIMENSIONS (For reference only)



Terminals accept AMP, Inc., 110 Faston terminals (AMP part No. 42068 for 1,000 piece roll)

### FEATURES

- Current sinking output
- Rugged thermoplastic housing
- Locating boss on each package and corresponding indentation on other side for gang mounting
- Elongated mounting holes for adjustable screw mounting
- Solder/quick-connect terminals accept standard push-on 110 connectors
- 0 to over 100 kHz operating speed

### 400SR ORDER GUIDE

Catalog Listings		413SR10	417SR10	413SR15	417SR11
Supply Voltage (VDC)		6 to 16	6 to 16	4.5 to 24	4.5 to 24
Supply Current (mA max.)		10.0	10.0	22	8.7
Output Type		Sink	Sink	Sink	Sink
Output Voltage (V)		0.4	0.4	0.4	0.4
Current per Output (mA)		20	20	20	10
Magnetics Type		Unipolar	Bipolar*	Unipolar	Bipolar
Magnetic Gauss Char. & Temp. 0 to 70°C	Max. Op.	560	200	375	80
	Min. Rel.	185	+200	220	+80
	Min. Dif.	40	40	50	40
+40 to 100°C	Max. Op.	580	220	400	100
	Min. Rel.	150	+220	200	+100
	Min. Dif.	40	40	50	40
+40 to 150°C	Max. Op.	600	250	430	130
	Min. Rel.	50	+250	160	+130
	Min. Dif.	40	40	50	40
25°C Typ.	Typ. Op.	400	120	350	40
	Typ. Rel.	300	+120	280	+40
	Typ. Dif.	100	120	70	80

\* Not necessarily latching.

Magnets page 23.

Digital