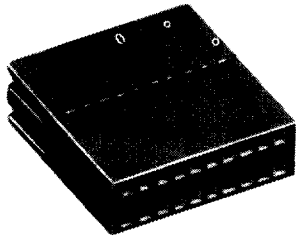
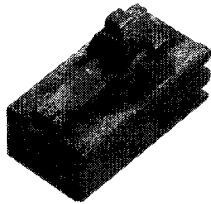


Double Row Receptacle Housings, .050 x .100 [1.27 x 2.54] Centerline, Cable-to-Board

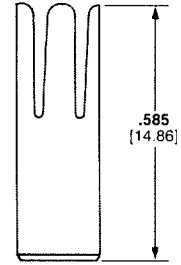
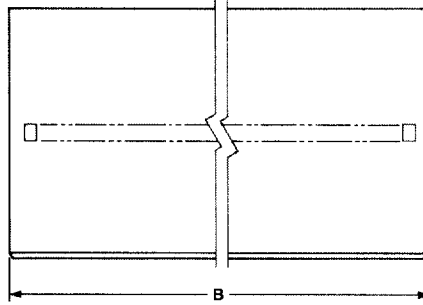


Plain Style Housings

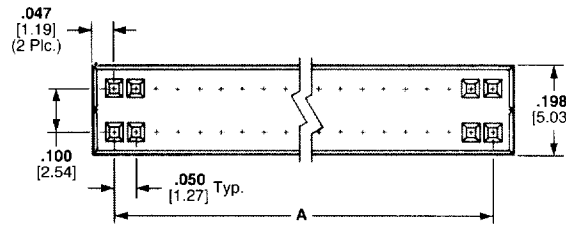


Latch Style Housings

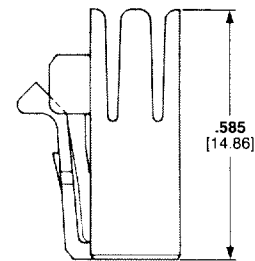
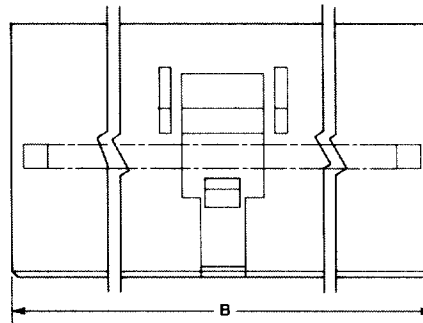
Plain Style Housings



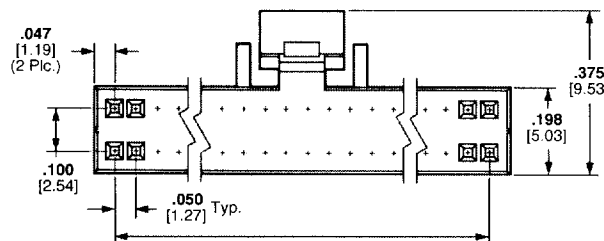
Plain



Latch Style Housings



Latch



Material:

Black thermoplastic, flame retardant, 94V-0 rated

Related Product Data:

Receptacle Contacts—page 4034

Mateable Headers—Section 2, pages 2031, 2032, 2034 (Double Row) and 2035

Technical Documents:

Product Specification
108-16022

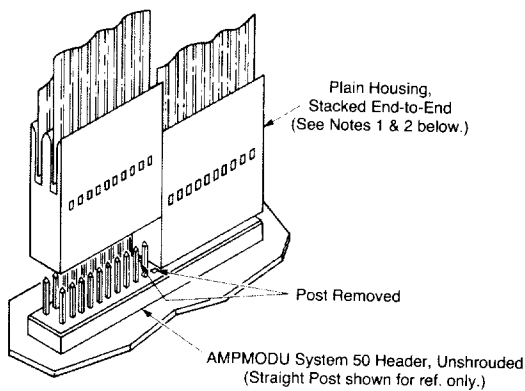
Application Specification
114-16008

For complete product information, order Catalog 82007

Double Row Receptacle Housings, .050 x .100 [1.27 x 2.54] Centerline, Cable-to-Board (Continued)

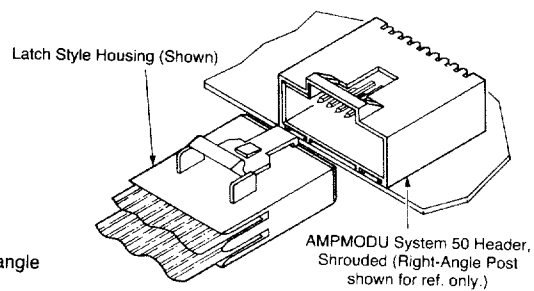
No. of Positions	Dimensions		Part Numbers	
	A	B	Plain Housing	Latch Style Housing
8	.150 3.81	.247 6.27	487938-8	487937-8
10	.200 5.08	.297 7.54	1-487938-0	1-487937-0
12	.250 6.35	.374 8.81	1-487938-2	1-487937-2
14	.300 7.62	.397 10.08	1-487938-4	1-487937-4
16	.350 .889	.447 11.35	1-487938-6	1-487937-6
20	.450 11.43	.547 13.89	2-487938-0	2-487937-0
24	.550 13.97	.647 16.43	2-487938-4	2-487937-4
26	.600 15.24	.697 17.7	2-487938-6	2-487937-6
30	.700 17.78	.797 20.24	3-487938-0	3-487937-0
34	.800 20.32	.897 22.78	3-487938-4	3-487937-4
40	.950 24.13	1.047 26.59	4-487938-0	4-487937-0
44	1.050 26.67	1.147 29.13	4-487938-4	4-487937-4
50	1.200 30.48	1.297 39.94	5-487938-0	5-487937-0
60	1.450 36.83	1.547 39.29	6-487938-0	6-487937-0
72	1.750 44.45	1.847 46.91	7-487938-2	7-487937-2
80	1.950 49.53	2.047 51.99	8-487938-0	8-487937-0
100	2.450 62.23	2.547 64.69	487938-1	487937-1

Note: Other sizes of receptacle housings, up to 120 positions, can be made available, consult Tyco Electronics.



- Notes:**
1. Plain housings are end-to-end stackable on either straight or right-angle posted, unshrouded AMPMODU System 50 headers.
 2. For end-to-end stacking, the two posts located between the adjoining housings must be removed to provide housing end clearance.

Typical Cable-to-Board Application of Plain Receptacle Housing



Typical Cable-to-Board Application of Latch Style Receptacle Housing

For complete product information, order Catalog 82007