

INPUT 24 VOLTS

Part Number	D.C. OUT VOLTS			MAX. POWER OUT		APPROX. SWITCH FREQ.		SIZE	*** PRICE 1-9
	Bridge	Full Wave	Dual Bridge	-55°C to +105°C	-55°C to +70°C	Self-Saturated	Square-Wave Driven**		
31620	10	5	±5	1.5W	3W	15K	30K TO 60K	1	41.54
31640	28	14	±14	1.5W	3W	15K	30K TO 60K	1	41.54
31660	48	24	±24	1.5W	3W	20K	40K TO 60K	1	41.54
31680	100	50	±50	1.5W	3W	20K	40K TO 60K	1	41.54
32705	10	5	±5	3W	4.5W	15K	30K TO 60K	2	41.54
32725	28	14	±14	3W	4.5W	15K	30K TO 60K	2	41.54
32745	48	24	±24	3W	4.5W	20K	40K TO 60K	2	41.54
32765	100	50	±50	3W	4.5W	20K	40K TO 60K	2	41.54
32768	150	75	±75	3W	-	10K	30K TO 60K	2	47.86
32771	200	100	±100	3W	-	10K	30K TO 60K	2	47.86
32774	300	150	±150	3W	-	10K	30K TO 60K	2	47.86
33683	10	5	±5	5W	7.5W	15K	30K TO 60K	3	41.54
33703	28	14	±14	5W	7.5W	15K	30K TO 60K	3	41.54
33723	48	24	±24	5W	7.5W	20K	40K TO 60K	3	41.54
33743	100	50	±50	5W	7.5W	20K	40K TO 60K	3	41.54
33746	150	75	±75	5W	-	10K	30K TO 60K	3	47.86
33749	200	100	±100	5W	-	10K	30K TO 60K	3	47.86
33752	300	150	±150	5W	-	10K	30K TO 60K	3	47.86

** Lower switching frequency may be used at lower output power.

INPUT 48 VOLTS

Part Number	D.C. OUT VOLTS			MAX. POWER OUT		APPROX. SWITCH FREQ.		SIZE	*** PRICE 1-9
	Bridge	Full Wave	Dual Bridge	-55°C to +105°C	-55°C to +70°C	Self-Saturated	Square-Wave Driven**		
31700	24	12	±12	1.5W	3W	15K	30K TO 60K	1	41.54
31720	48	24	±24	1.5W	3W	20K	40K TO 60K	1	41.54
31740	100	50	±50	1.5W	3W	20K	40K TO 60K	1	41.54
31760	150	75	±75	1.5W	3W	20K	40K TO 60K	1	41.54
32785	24	12	±12	3W	4.5W	15K	30K TO 60K	2	41.54
32805	48	24	±24	3W	4.5W	20K	40K TO 60K	2	41.54
32825	100	50	±50	3W	4.5W	20K	40K TO 60K	2	41.54
32845	150	75	±75	3W	4.5W	20K	40K TO 60K	2	41.54
32848	200	100	±100	3W	4.5W	10K	30K TO 60K	2	47.86
32851	300	150	±150	3W	4.5W	10K	30K TO 60K	2	47.86
33763	24	12	±12	5W	7.5W	15K	30K TO 60K	3	47.86
33783	48	24	±24	5W	7.5W	20K	40K TO 60K	3	47.86
33803	100	50	±50	5W	7.5W	20K	40K TO 60K	3	47.86
33823	150	75	±75	5W	7.5W	20K	40K TO 60K	3	47.86
33826	200	100	±100	5W	-	10K	30K TO 60K	3	47.86
33829	300	150	±150	5W	-	10K	30K TO 60K	3	47.86

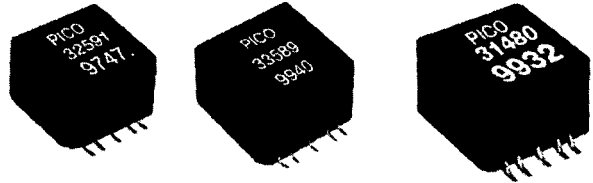
** Lower switching frequency may be used at lower output power.

***Discount Prices: 1-9 Net; 10-24 less 10%; 25-49 less 16%; 50-99 less 23%; 100-499 less 30%
Ordering Instructions: No minimum. Net 30 days F.O.B. Pelham, New York

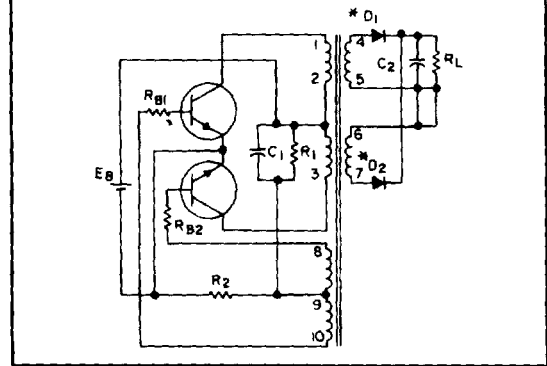
PICO

SURFACE MOUNT

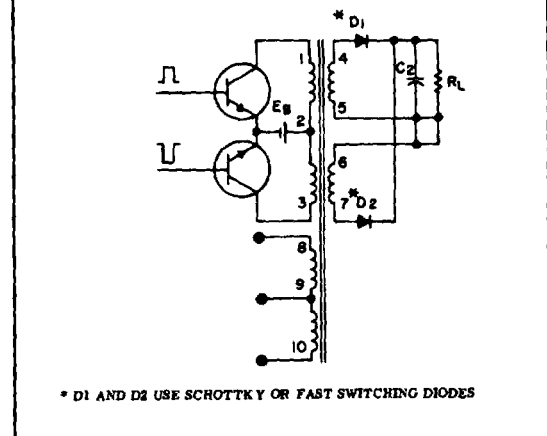
Ultra-Miniature DC-DC Converter Transformers



SCHEMATIC USING TRANSFORMERS AS SELF-SATURATING



SCHEMATIC USING TRANSFORMERS AS LINEAR SWITCHING



* D1 AND D2 USE SCHOTTKY OR FAST SWITCHING DIODES

Delivery - stock to one week

For immediate engineering assistance or to place an order -
Call Toll Free 800-431-1064

PICO Electronics, Inc.

143 Sparks Avenue, Pelham, NY 10803-1837 FAX: 914-738-8225
www.picoelectronics.com E-Mail: info@picoelectronics.com