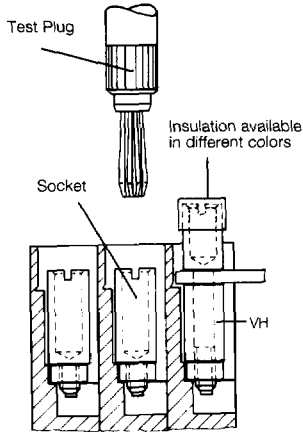
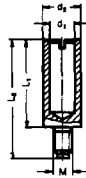


Sockets StB

Type StB sockets are inserted either into the current bar or screwed into the terminal block in place of the clamping screw depending on the terminal block. They accept Type PS test plugs and Type QS jumpering plugs. If a possibility to test is required with inserted jumpers, an StB 29.5 or 30.5 which has an insulation sleeve and can accept test plug PS 4 is inserted instead of the screw.

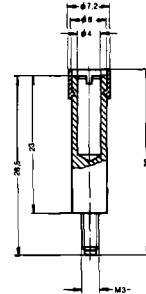


StB 5.5...17



| Type | Cat. No. | L1 | L2 | d1 | d2 | M | For terminal type |
|----------|----------|------|------|-----|-----|-----|----------------------------------|
| StB 5.5 | 12270 | 5.5 | 11 | 2.3 | 3.7 | 3 | SAKL 4/20* |
| StB 6 | 37940 | 6 | 11.5 | 2.3 | 3.9 | 3 | AKZ 4 DK 4, SAKR* |
| StB 6 | 13020 | 6 | 13 | 2.3 | 3.9 | 2.5 | SAK 2.5* |
| StB 7 | 35850 | 7 | 14.5 | 2.3 | 4 | 3 | SAKC 4, SAK 4*, WDU 4 |
| StB 7.5 | 13000 | 7.5 | 17 | 4 | 6 | 4 | SAK 10, SAKB 10* |
| StB 8.5 | 21570 | 8.5 | 11.5 | 2.3 | 4 | 2.5 | AKZ 4/DK 4/, SAKD 2.5 N, WDU 2.5 |
| StB 8.5 | 28060 | 8.5 | 12 | 2.3 | 5 | 3 | SAK 2.5, WDU 4, 6, 10 |
| StB 8.5 | 21570 | 8.5 | 12 | 2 | 4.5 | 3 | SAKT 4, WDU 4, 6, 10 |
| StB 13.5 | 13520 | 13.5 | 18.5 | 4 | 6 | 4 | SAKA 10, SAKC 10 |
| StB 14 | 16860 | 14 | 17.5 | 2.3 | 5 | 3 | SAK 4 |
| StB 14 | 16890 | 14 | 19 | 4 | 6 | 3 | SAK 6 N, 10, 16, SAKT 1 + 2 |
| StB 16 | 38540 | 16 | 28 | 4 | 7 | 5 | SAK 70, SAK 95 |
| StB 16 | 14020 | 16 | 23 | 4 | 7 | 4 | SAK 35/35 N, SAKB 10 |
| StB 17 | 14710 | 17 | 22 | 4 | 6 | 4 | SAKC 10 |

StB 29.5 and 30.5



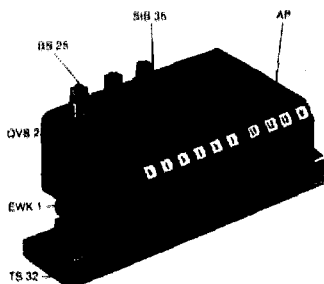
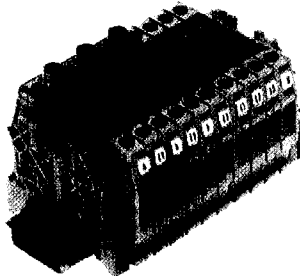
| Type | Color | Cat. No. | L1 | L2 | L | For terminal type |
|----------|--------|----------|------|------|---|-------------------------|
| StB 30.5 | Black | 34100 | 30.5 | 31.7 | 7 | SAK 4, |
| StB 30.5 | Grey | 34110 | | | | SAK 6 N, SAK 10, SAK 16 |
| StB 30.5 | Blue | 34120 | | | | |
| StB 30.5 | Red | 34130 | | | | |
| StB 30.5 | Green | 34140 | | | | |
| StB 30.5 | Yellow | 34150 | | | | |
| StB 30.5 | Violet | 34160 | | | | |
| StB 29.5 | Black | 13340 | 29.5 | 30.7 | 9 | SAK 2.5 |

Sockets StB for WTL/SAKT

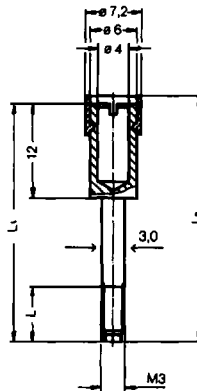
The Type StB 25 socket accepts the PS 4 test plug in Type WTL 6/1, SAKT 1 and SAKT 2 disconnect terminals or the Type QS jumper plug.

The Type StB 35 socket is used when simultaneous testing must be carried out with inserted jumper slide.

With insulation sleeves as shock protection and color coding for test plugs and jumper plugs with a diameter of 4mm.

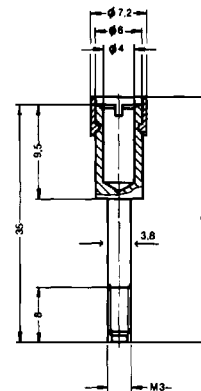


StB 25



| Type | Color | Cat. No. | For terminal type |
|--------|--------|----------|-------------------|
| StB 25 | Yellow | 26720 | SAKT 1 and SAKT 2 |
| | Green | 27120 | |
| | Violet | 27130 | |
| | Black | 27150 | |
| | Grey | 27140 | |
| | Blue | 34340 | |
| | Red | 34330 | |

StB 35



| Type | Color | Cat. No. | For terminal type |
|--------|--------|----------|-------------------|
| StB 35 | Yellow | 38900 | SAKT 1 and SAKT 2 |
| | Green | 38890 | |
| | Violet | 38910 | |
| | Black | 38850 | |
| | Grey | 38860 | |
| | Blue | 38870 | |
| | Red | 38880 | |

*Used in place of terminal screw. Other blocks use the StB in the jumper hole in the current bar.