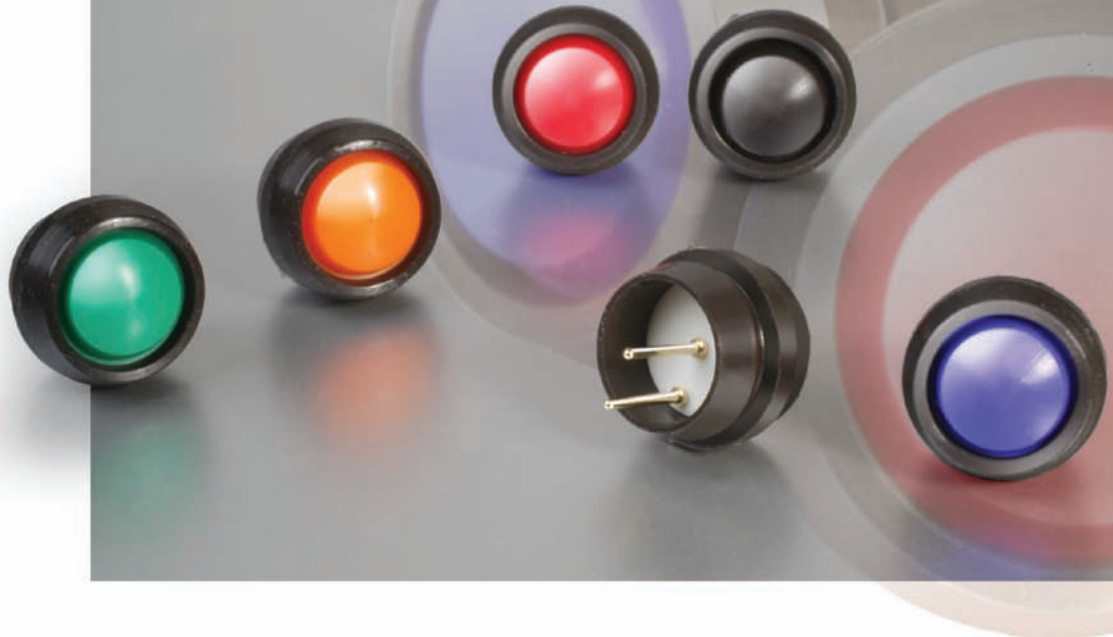


# Series 47



SNAP ACTION

CUSTOM ASSEMBLIES

**PUSH BUTTON**

SEALED

ROCKER

INDICATOR

SLIDE

VANDAL RESISTANT

ILLUMINATED

ACTIVE TOUCH

## Low Cost Sealed Pushbutton Switch

The Series 47 is a uniquely designed sealed miniature pushbutton switch. The silicone button and body can be panel mounted and terminated with a standard connector or mounted in a P.C. board. The switches come in two levels of sealing: a panel sealed only version and a fully sealed version with epoxy sealed base. Both meet IP67 requirements. The buttons are available in seven different colors. All this at a very affordable price.

### Key Features

- Sealed to IP67
- Small size
- 7 button colours
- P.C. terminals (connector available)
- Long life
- Low cost

### Typical Applications

- Marine equipment
- Medical equipment
- Outdoor controls
- Food processing equipment
- Appliances
- Recreational vehicles



**TW Switches**

Standards / Agency / Ratings

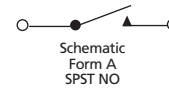
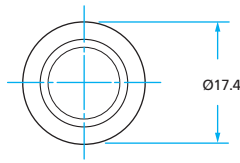


Patent # 6,965,085



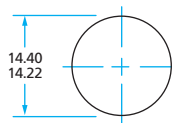
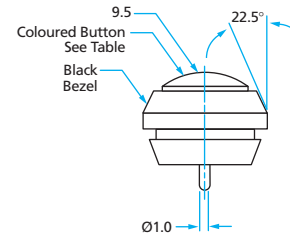
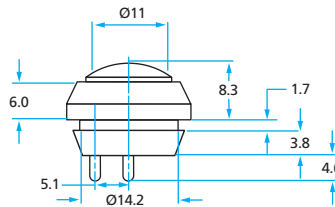
# Series 47 Low Cost Sealed Pushbutton

## 47-11X1 and 47-21X1

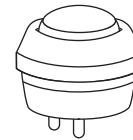


### Mechanical/Electrical Characteristics:

- **Travel (nom)**  
.020" (0.5mm)
- **Life (min)**  
100,000 cycles
- **Operating force (nom)**  
1,000g
- **Sealed to**  
IP67
- **Operating temperature**  
-40°C to +85°C
- **Button material**  
silicone
- **Contact**  
metal snap dome providing a tactile feel
- **Terminal finish**  
gold over nickel
- **Dielectric strength**  
1,000 VRMS
- **Insulation Resistance**  
10,000 Meg Ohms
- **Contact Resistance (initial)**  
<100 Ohms
- **Current rating**  
20 mA @28 VDC
- **Switch terminals mate with ITW Pancon Mas-Con Connector**  
CE100F24-3-DB
- **Recommended panel thickness**  
.060 (1.52mm) max



Recommended  
Panel Cut-out



### Ordering Information

Part Number	Button Colour	Panel Sealed	Epoxy Sealed Base
47 -1111	Black	✓	✓
47 -1121	Red	✓	✓
47 -1131	Green	✓	✓
47 -1141	White	✓	✓
47 -1151	Yellow	✓	✓
47 -1161	Blue	✓	✓
47 -1171	Orange	✓	✓
47 -2111	Black	✓	
47 -2121	Red	✓	
47 -2131	Green	✓	
47 -2141	White	✓	
47 -2151	Yellow	✓	
47 -2161	Blue	✓	
47 -2171	Orange	✓	

## ITW Switches

ITW Switches Limited  
Norway Road, Portsmouth, Hampshire PO3 5HT United Kingdom  
Tel: 023 9265 6200 Fax: 023 9266 6352  
Email: info@itwswitches.co.uk

[www.itwswitches.co.uk](http://www.itwswitches.co.uk)