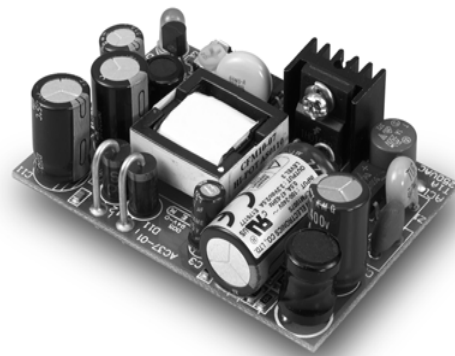




AC10/15

10/15 WATT OPEN FRAME AC-DC MODULES



Features

- Universal Input 85-264Vac
- Conductive EMI Meets CISPR/FCC Class B
- High Efficiency at 82% Typical
- PCB Mountable

Specifications

INPUT CHARACTERISTICS:

Voltage85-264VAC
 Frequency.....47-63Hz
 Inrush Current.....20A Max. @ 115Vac
 40A Max. @ 230Vac
 Conducted EMI.....CISPR/FCC Class B
 IsolationInput to Output=4,242Vdc
 Leakage Current.....0.25mA max.

ENVIRONMENTAL CHARACTERISTICS:

Operating Temperature0°C ~ 40°C
 Storage Temperature-20°C ~ 85°C
 Cooling.....Free Air Convection

OUTPUT CHARACTERISTICS:

Holdup Time.....16mS typ. @ 115Vac
 Short Circuit Protection.....Continuous
 Temperature Coefficient.....0.05%/°C

MECHANICAL OUTLINE:

Dimensions AC10: 65 x 45 x 23mm (2.56x1.77x0.91Inches)
 AC15: 69.9 x 48 x 23mm (2.75x1.89x0.91Inches)
 Weight AC10: 60g
 AC15: 80g

Typical at 25°C, nominal line and 75% load, unless otherwise Specified

10 Watt Series

| MODEL | OUTPUT VOLTAGE | MAX. LOAD | MIN. LOAD | RIPPLE & NOISE | VOLTAGE ACCURACY | LINE REGULATION | LOAD REGULATION | EFF % |
|---------|----------------|-----------|-----------|----------------|------------------|-----------------|-----------------|-------|
| AC1001S | 5 V | 2000mA | 0A | 1% | ±1% | ±0.5% | ±1% | 70 |
| AC1002S | 12 V | 840mA | 0A | 1% | ±1% | ±0.5% | ±1% | 75 |
| AC1003S | 15 V | 670mA | 0A | 1% | ±1% | ±0.5% | ±1% | 75 |
| AC1005S | 24 V | 420mA | 0A | 1% | ±1% | ±0.5% | ±1% | 78 |
| AC1007S | 3.3 V | 2500mA | 0A | 50mV | ±1% | ±0.5% | ±1% | 65 |
| AC1009S | 9 V | 1120mA | 0A | 1% | ±1% | ±0.5% | ±1% | 72 |

15 Watt Series

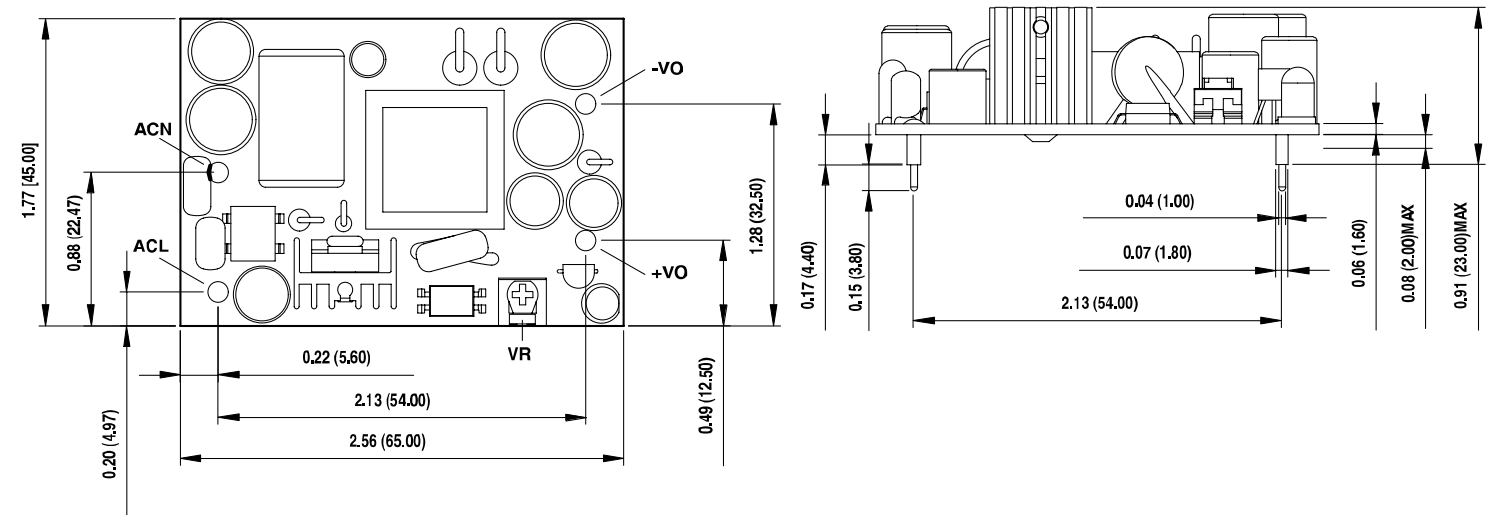
| MODEL | OUTPUT VOLTAGE | MAX. LOAD | MIN. LOAD | RIPPLE & NOISE | VOLTAGE ACCURACY | LINE REGULATION | LOAD REGULATION | EFF % |
|---------|----------------|-----------|-----------|----------------|------------------|-----------------|-----------------|-------|
| AC1501S | 5 V | 3000mA | 0A | 1% | ±1% | ±0.5% | ±1% | 73 |
| AC1502S | 12 V | 1250mA | 0A | 1% | ±1% | ±0.5% | ±1% | 80 |
| AC1503S | 15 V | 1000mA | 0A | 1% | ±1% | ±0.5% | ±1% | 80 |
| AC1505S | 24 V | 630mA | 0A | 1% | ±1% | ±0.5% | ±1% | 82 |
| AC1507S | 3.3 V | 3000mA | 0A | 50mV | ±1% | ±0.5% | ±1% | 70 |
| AC1509S | 9 V | 1670mA | 0A | 1% | ±1% | ±0.5% | ±1% | 75 |

NOTE:

1. Add a 0.1µF ceramic capacitor and a 10µF E.L. capacitor to output for Ripple & Noise Measuring @ 20MHz BW.
2. Line Regulation is Measured from High Line to Low Line with Full Load.
3. Load Regulation is Measured from Full to 10% Load.

10 Watt Series

All Dimensions are In Inches(mm)
 Tolerances: .xx±.02(.xx±.5) unless otherwise noted



15 Watt Series

