

A05b IDC SOCKET (INTENSIVE-CONTACT)

PITCH: 2.0mm

SPECIFICATIONS

Material

Insulator : PBT, glass reinforced, rated UL 94V-0

Contact : Phosphor Bronze

Electrical

Current Rating : 1 Amp DC

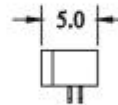
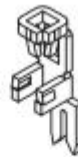
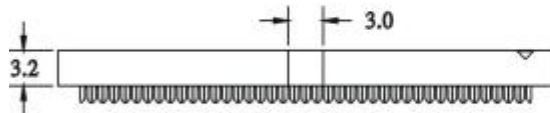
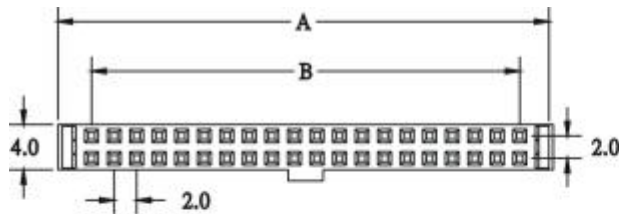
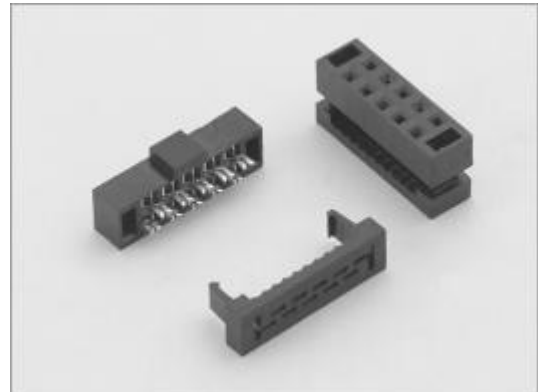
Contact Resistance : 30 mΩ max.

Insulation Resistance : 3000 MΩ min.

Dielectric Withstanding Voltage : 500V AC for 1minute

Operating Temperature : -40°C to +105°C

- Terminated with 1.00mm pitch flat ribbon cable.
- Mating Suggestion : C05b, C06b, C06c series.



POSITION	A	B
6	9.96	4.0
8	11.96	6.0
10	13.96	8.0
12	15.96	10.0
14	17.96	12.0
16	19.96	14.0
20	23.96	18.0
22	25.96	20.0
26	29.96	24.0
30	33.96	28.0
34	37.96	32.0
36	39.96	34.0
40	43.96	38.0
44	47.96	42.0
50	53.96	48.0

HOW TO ORDER:

A05b - 1 - 2 - 3 - 4 - 5

1.NO. OF CONTACT	2.CONTACT MATERIAL	3.CONTACT PLATING	4.SPECIAL FUNCTION	5.INSULATOR COLOR
06 08 10 12 14 16 20 22 24 26 30 34 36 40 44 50	B: PHOSPHOR BRONZE	T: TIN PLATED S: SELECTIVE G: GOLD FLASH A: 5u" INCH GOLD B: 10u" INCH GOLD C: 15u" INCH GOLD D: 30u" INCH GOLD	B: W/O STRAIN RELIEF W BAR D: W/O STRAIN RELIEF W/O BAR	1. BLACK