

Surface Mount High Reliability Mixer

ADE-R901LH+

Level 10 (LO Power +10 dBm) 300 to 1000 MHz



CASE STYLE: CD542
PRICE: \$3.35 ea. QTY. (10-49)

+ RoHS compliant in accordance with EU Directive (2002/95/EC)

The +Suffix has been added in order to identify RoHS Compliance. See our web site for RoHS Compliance methodologies and qualifications.

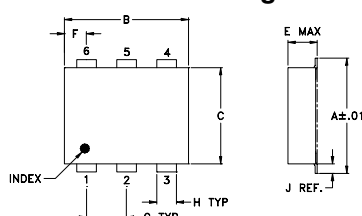
Maximum Ratings

Operating Temperature	-40°C to 85°C
Storage Temperature	-55°C to 100°C
RF Power	50mW
IF Current	40mA

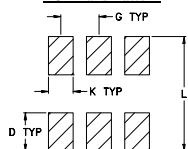
Pin Connections

LO	6
RF	4
IF	3
GROUND	1,2,5

Outline Drawing



PCB Land Pattern

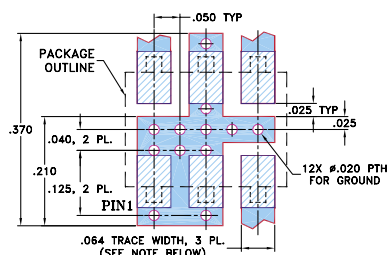


Suggested Layout,
Tolerance to be within ±.002

Outline Dimensions (inch/mm)

A	B	C	D	E	F	G		
.272	.310	.220	.100	.112	.055	.100		
6.91	7.87	5.59	2.54	2.84	1.40	2.54		
H	J	K	L				wt	
.030	.026	.065	.300				grams	
0.76	0.66	1.65	7.62				0.20	

Demo Board MCL P/N: TB-02 Suggested PCB Layout (PL-051)



NOTES: 1. TRACE WIDTH IS SHOWN FOR ROGERS RO4350B WITH DIELECTRIC THICKNESS .030" ± .002"; COPPER: 1/2 OZ. EACH SIDE. FOR OTHER MATERIALS TRACE WIDTH MAY NEED TO BE MODIFIED.
2. BOTTOM SIDE OF THE PCB IS CONTINUOUS GROUND PLANE.
■ DENOTES PCB COPPER LAYOUT WITH SMOBC (SOLDER MASK OVER BARE COPPER)
■ DENOTES COPPER LAND PATTERN FREE OF SOLDER MASK

Features

- hermetically sealed ceramic quad
- low conversion loss, 6.4 dB typ.
- excellent L-R isolation, 42 dB typ.
- low profile package
- aqueous washable
- protected by US Patent 6,133,525

Applications

- cellular
- ISM/GSM

Electrical Specifications

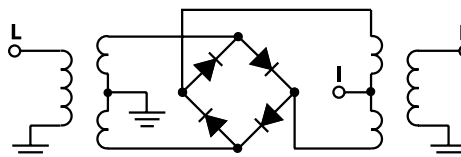
FREQUENCY (MHz)	CONVERSION LOSS (dB)	LO-RF ISOLATION (dB)	LO-IF ISOLATION (dB)	IP3 at center band (dBm)
$f_L - f_U$	\bar{X} σ Max.	Typ. Min.	Typ. Min.	Typ.
300-1000	DC-800	6.4 0.10 7.8	42 32	35 20 18

1 dB COMP.: +5 dBm typ.

Typical Performance Data

Frequency (MHz)	Conversion Loss (dB)	Isolation L-R (dB)	Isolation L-I (dB)	VSWR RF Port (:1)	VSWR LO Port (:1)	
						LO +10dBm
RF	LO	LO +10dBm	LO +10dBm	LO +10dBm	LO +10dBm	
291.24	321.24	6.45	47.15	43.59	1.86	2.58
331.44	361.44	6.37	46.19	43.53	1.76	2.57
391.75	421.75	6.24	45.07	42.79	1.67	2.50
431.96	461.96	6.19	44.03	42.11	1.61	2.50
492.27	522.27	6.11	43.64	40.26	1.57	2.49
532.47	562.47	6.20	43.05	39.91	1.52	2.49
592.78	622.78	6.11	42.54	37.39	1.51	2.50
632.99	662.99	6.19	42.06	36.09	1.47	2.48
693.30	723.30	6.27	41.77	35.79	1.47	2.52
733.51	763.51	6.44	41.51	34.44	1.44	2.52
793.81	823.81	6.47	41.27	32.97	1.44	2.58
834.02	864.02	6.44	41.24	31.75	1.42	2.58
894.33	924.33	6.42	40.57	30.76	1.40	2.63
994.85	1024.85	6.40	41.22	31.23	1.33	2.77
1035.05	1065.05	6.44	41.30	30.42	1.29	2.83

Electrical Schematic



Mini-Circuits®
ISO 9001 ISO 14001 CERTIFIED

ALL NEW
minicircuits.com

P.O. Box 350166, Brooklyn, New York 11235-0003 (718) 934-4500 Fax (718) 332-4661 For detailed performance specs & shopping online see Mini-Circuits web site



The Design Engineers Search Engine Provides ACTUAL Data Instantly From MINI-CIRCUITS At: www.minicircuits.com

RF/IF MICROWAVE COMPONENTS

REV. OR
M109914
ADE-R901LH+
ED-12873/4
WL/TD/QL
070516
Page 1 of 2

