

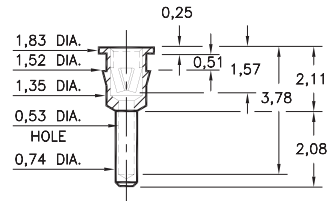
PIN RECEPTACLES

FOR 0,38 - 0,56 DIAMETER PINS

0512

0512-0-15-XX-12-XX-04-0

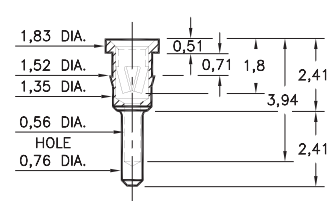
Press-fit in 1,45 mounting hole



0703

0703-0-15-XX-12-XX-04-0

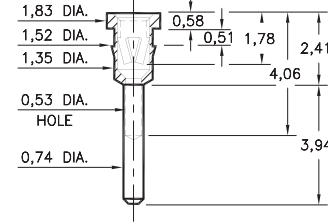
Press-fit in 1,45 mounting hole



0574

0574-0-15-XX-12-XX-04-0

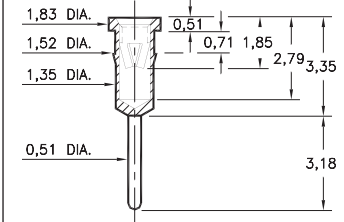
Press-fit in 1,45 mounting hole



0468 *

0468-0-15-XX-12-XX-04-0

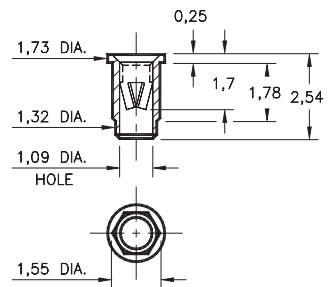
Press-fit in 1,45 mounting hole



8894 *

8894-0-15-XX-12-XX-10-0

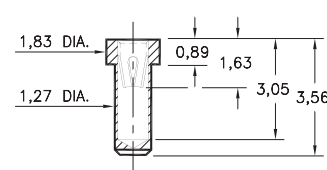
Hex press-fit in 1,5 plated through-hole



0550 *

0550-0-15-XX-22-XX-10-0

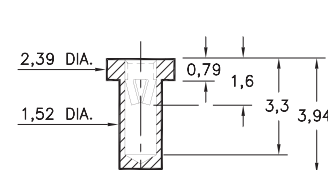
Solder mount in 1,32 min. mounting hole
Also available on 16mm wide carrier tape:
1,700 parts per 330mm reel
Order as: 0550-0-57-XX-22-XX-10-0



0671 *

0671-0-15-XX-12-XX-10-0

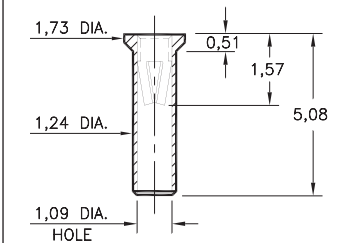
Solder mount in 1,6 min. mounting hole



0707 *

0707-0-15-XX-12-XX-10-0

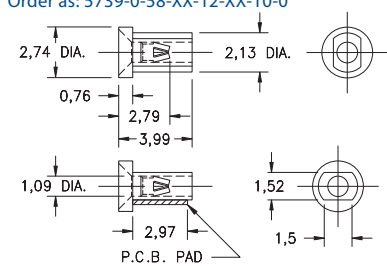
Solder mount in 1,3 min. mounting hole



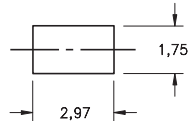
5739 *

5739-0-18-XX-12-XX-10-0

Surface mount
Also available on 16mm wide carrier tape:
3,000 parts per 330mm reel
Order as: 5739-0-58-XX-12-XX-10-0



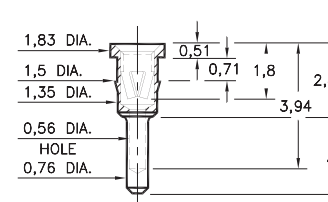
P.C.B. Layout



1534

1534-X-15-XX-12-XX-04-0

Press-fit in 1,42 mounting hole



| Basic Part Number | Length A |
|-------------------|----------|
| 1534-0 | 2,41 |
| 1534-1 | 3,18 |

SPECIFICATIONS:

Shell Material: Brass Alloy 360, 1/2 Hard

Contact Material: Beryllium Copper Alloy 172, HT

Dimensions: Millimeters

Tolerances On: Lengths: ± 0,13

Diameters: ± 0,051

Angles: ± 2°



ORDER CODE: XXXX - X - 1X - XX - XX - XX - XX - 0

BASIC PART #

SPECIFY SHELL FINISH:

01 5,08µm TIN/LEAD OVER NICKEL

◆ 80 5,08µm TIN OVER NICKEL (RoHS)

◆ 15 0,25µm GOLD OVER NICKEL (RoHS)

SPECIFY CONTACT FINISH:

02 2,54µm TIN/LEAD OVER NICKEL

◆ 84 2,54µm TIN OVER NICKEL (RoHS)

◆ 27 0,76µm GOLD OVER NICKEL (RoHS)

SELECT CONTACT:

#12 or #22 CONTACT (DATA ON PAGE 252)

* (Contact may be interchanged with group B or C contact on page 248)



Mouser Electronics

Authorized Distributor

Click to View Pricing, Inventory, Delivery & Lifecycle Information:

[Mill-Max:](#)

[9016-0-15-01-07-27-10-0](#) [0468-0-15-15-12-27-04-0](#) [0550-0-15-15-22-27-10-0](#)