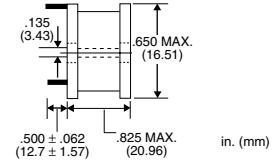
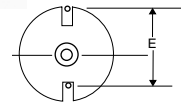


DBI High Current Power Line Chokes



PART NUMBER	INDUCTANCE μH @ 1 kHz	DCR OHMS (MAX)	SATURATION CURRENT DCAMPS	CURRENT RATING DCAMPS	E DIMENSIONS INCHES	LEAD DIAMETER	CORE MATERIAL
DB1-221	2.2 ± 20%	.004	47.0	16.1	.500 (12.70)	.0508 (1.29)	FERRITE
DB1-331	3.3 ± 20%	.005	40.0	14.4	.500 (12.70)	.0508 (1.29)	FERRITE
DB1-391	3.9 ± 20%	.006	36.0	13.1	.500 (12.70)	.0508 (1.29)	FERRITE
DB1-471	4.7 ± 20%	.007	32.0	12.1	.500 (12.70)	.0508 (1.29)	FERRITE
DB1-561	5.6 ± 20%	.007	29.0	12.1	.500 (12.70)	.0508 (1.29)	FERRITE
DB1-681	6.8 ± 20%	.007	26.0	12.1	.500 (12.70)	.0508 (1.29)	FERRITE
DB1-821	8.2 ± 20%	.008	24.5	11.4	.500 (12.70)	.0508 (1.29)	FERRITE
DB1-102	10 ± 10%	.009	21.2	10.7	.500 (12.70)	.0508 (1.29)	FERRITE
DB1-122	12 ± 10%	.010	19.0	10.2	.500 (12.70)	.0508 (1.29)	FERRITE
DB1-152	15 ± 10%	.011	17.5	9.7	.500 (12.70)	.0453 (1.15)	FERRITE
DB1-182	18 ± 10%	.015	16.5	8.3	.500 (12.70)	.0453 (1.15)	FERRITE
DB1-222	22 ± 10%	.017	15.8	7.8	.480 (12.19)	.0403 (1.02)	FERRITE
DB1-272	27 ± 10%	.025	14.4	6.4	.480 (12.19)	.0359 (0.91)	FERRITE
DB1-332	33 ± 10%	.033	13.2	5.6	.480 (12.19)	.0359 (0.91)	FERRITE
DB1-392	39 ± 10%	.040	11.8	5.1	.480 (12.19)	.0320 (0.81)	FERRITE
DB1-472	47 ± 10%	.050	11.0	4.5	.480 (12.19)	.0320 (0.81)	FERRITE
DB1-562	56 ± 10%	.050	10.0	4.5	.480 (12.19)	.0320 (0.81)	FERRITE
DB1-602	60 ± 10%	.060	9.6	4.1	.480 (12.19)	.0320 (0.81)	FERRITE
DB1-682	68 ± 10%	.063	8.9	4.0	.480 (12.19)	.0285 (0.72)	FERRITE
DB1-822	82 ± 10%	.065	8.2	4.0	.500 (12.70)	.0285 (0.72)	FERRITE
DB1-103	100 ± 10%	.072	7.5	3.8	.500 (12.70)	.0285 (0.72)	FERRITE
DB1-123	120 ± 10%	.100	5.8	3.2	.470 (11.94)	.0253 (0.64)	FERRITE
DB1-153	150 ± 10%	.140	5.6	2.7	.470 (11.94)	.0253 (0.64)	FERRITE
DB1-183	180 ± 10%	.150	5.1	2.6	.470 (11.94)	.0253 (0.64)	FERRITE
DB1-223	220 ± 10%	.172	4.3	2.5	.470 (11.94)	.0253 (0.64)	FERRITE
DB1-273	270 ± 10%	.240	4.1	2.1	.470 (11.94)	.0201 (0.57)	FERRITE
DB1-333	330 ± 10%	.262	3.8	2.0	.470 (11.94)	.0201 (0.57)	FERRITE
DB1-393	390 ± 10%	.300	3.3	1.9	.470 (11.94)	.0201 (0.57)	FERRITE
DB1-473	470 ± 10%	.396	3.2	1.6	.470 (11.94)	.0201 (0.57)	FERRITE
DB1-563	560 ± 10%	.430	2.9	1.6	.470 (11.94)	.0179 (0.45)	FERRITE



NOTES:

- Operating temperature -55°C to +125°C
- Leads tinned to within .062 of body
- Epoxy insulated core
- Winding periphery wrapped to secure winding and lead positioning

PACKAGING SPECS:

Bulk only.

Mouser Electronics

Authorized Distributor

Click to View Pricing, Inventory, Delivery & Lifecycle Information:

[Gowanda Electronics:](#)

[DB1-392](#) [DB1-103](#) [DB1-472](#) [DB1-272](#)