

# 10x38mm photovoltaic fuses — 1000Vdc, 1-30A



## Catalog symbols / mounting style:

- 1-20A\*
  - PV-(amp)A10F (cylindrical)
  - PV-(amp)A10-T (bolt mounting)
  - PV-(amp)A10-1P (single PCB tab)
  - PV-(amp)A10-2P (dual PCB tab)
  - PV-(amp)10F-CT (in-line with crimp terminals)
- 25-30A\*\* PV10M-(amp) (cylindrical)

\* Ceramic tube construction.

\*\* Melamine tube construction.

## Description:

Eaton's Bussmann® series of 10x38mm, 1000Vdc PV fuses are for protecting and isolating photovoltaic strings. The fuses are specifically designed for use in PV systems with extreme ambient temperature, high cycling and low fault current conditions (reverse current, multi-array fault) string arrays.

Four styles available for application flexibility.

## Basic fuse size

- 10x38mm

## Ratings

- Volts 1000Vdc
- Amps 1-30A
- Interrupting Rating
  - 50kA (1-20A)
  - 20kA (25-30A)
- Time Constant: - 1-3ms

## Operating class

- gPV and UL PV fuse links

## PV fuse coordination

- With thin film cells and 4", 5" and 6" crystalline silicon cells

## Agency information

- UL Listed to 2579\*, Guide JFGA, File E335324
- IEC 60269-6 (gPV)
- CSA File 53787, Class 1422-30 (1-15A), 20-30A pending
- CCC (1-20A) (25-30A pending)
- RoHS compliant

\* Except crimp terminal version that is UL Recognized to UL 2579, Guide JFGA2, File E335324.

## Packaging (carton quantity)

- PV-(amp)A10F, PV-(amp)A10T, PV-(amp)A10\_P and PV10M-(amp): 10
- PV-(amp)10F-CT & PV10M-(amp)-CT in-line: 180

## Features:

- Meets UL and IEC photovoltaic standards for global acceptance
- Low watts loss performance for energy efficiency
- Low temperature rise performance for more precise sizing
- In-line crimp terminal version is easy to apply in wire harness construction

## Typical applications:

- Combiner boxes
- Inverters
- PV wire harnesses



Powering Business Worldwide

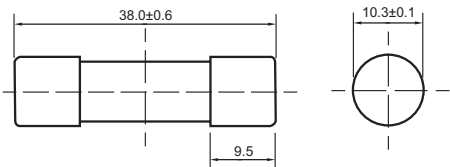
**Specifications:**

Catalog numbers / configurations					Current rating (amps)	Voltage rating (Vdc)	Energy integrals I <sup>2</sup> t (A <sup>2</sup> s)		Watts loss (W)	
Cylindrical ferrule	Bolt fixing	PCB fixing		In-line with crimp terminal			Pre-arcing	Total @ 1000V	0.8I <sub>n</sub>	I <sub>n</sub>
		Single pin	Double pin							
PV-1A10F	PV-1A10-T	PV-1A10-1P	PV-1A10-2P	PV-1A10F-CT	1	1000	0.15	0.4	0.8	1.5
PV-2A10F	PV-2A10-T	PV-2A10-1P	PV-2A10-2P	PV-2A10F-CT	2	1000	1.2	3.4	0.6	1.0
PV-3A10F	PV-3A10-T	PV-3A10-1P	PV-3A10-2P	PV-3A10F-CT	3	1000	4	11	0.8	1.3
PV-3-5A10F	PV-3-5A10-T	PV-3-5A10-1P	PV-3-5A10-2P	PV-3-5A10F-CT	3.5	1000	6.6	18	0.9	1.4
PV-4A10F	PV-4A10-T	PV-4A10-1P	PV-4A10-2P	PV-4A10F-CT	4	1000	9.5	26	1.0	1.5
PV-5A10F	PV-5A10-T	PV-5A10-1P	PV-5A10-2P	PV-5A10F-CT	5	1000	19	50	1.0	1.6
PV-6A10F	PV-6A10-T	PV-6A10-1P	PV-6A10-2P	PV-6A10F-CT	6	1000	30	90	1.1	1.8
PV-8A10F	PV-8A10-T	PV-8A10-1P	PV-8A10-2P	PV-8A10F-CT	8	1000	3	32	1.2	2.1
PV-10A10F	PV-10A10-T	PV-10A10-1P	PV-10A10-2P	PV-10A10F-CT	10	1000	7	70	1.2	2.3
PV-12A10F	PV-12A10-T	PV-12A10-1P	PV-12A10-2P	PV-12A10F-CT	12	1000	12	120	1.5	2.7
PV-15A10F	PV-15A10-T	PV-15A10-1P	PV-15A10-2P	PV-15A10F-CT	15	1000	22	220	1.7	2.9
PV-20A10F	PV-20A10-T	PV-20A10-1P	PV-20A10-2P	PV-20A10F-CT	20	1000	34	350	2.1	3.6
PV10M-25	—	—	—	—	25	1000	325	1860*	1.65	2.91
PV10M-30	—	—	—	—	30	1000	536	3360*	1.65	3.31

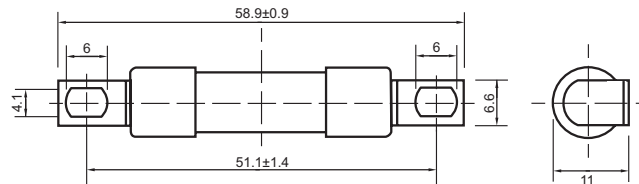
\* Total I<sup>2</sup>t @ 20kA IR.

**Dimensions/configurations - mm:**

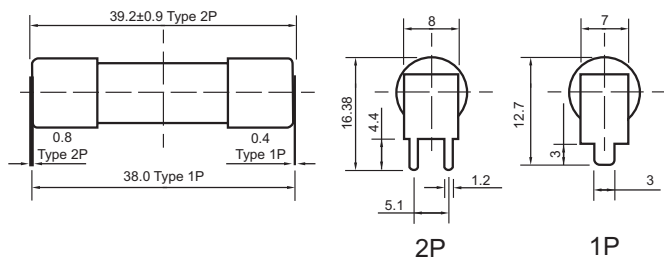
**Cylindrical PV-(amp)A10F, PV10M-(amp)**



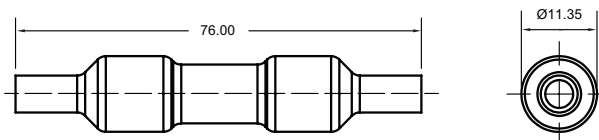
**Cylindrical with bolt fixings PV-(amp)A10-T**



**Cylindrical with PCB tabs PV-(amp)A10-1P (single pin), PV-(amp)A10-2P (double pin)**



**In-line with crimp terminals PV-(amp)A10F-CT (1-20A)**



The in-line crimp terminal version can be electrically insulated with customer supplied overmolding or approved heat-shrink.

**Operating temperature range**

- -40°C to 90°C

**Wire range and type**

- Single conductor, 12-10AWG 75°C/90°C Cu stranded PV

**Overmolding temperature parameters**

- 233°C for 180 sec Max

**Terminals**

- Crimp terminal for 12-10AWG PV copper conductors

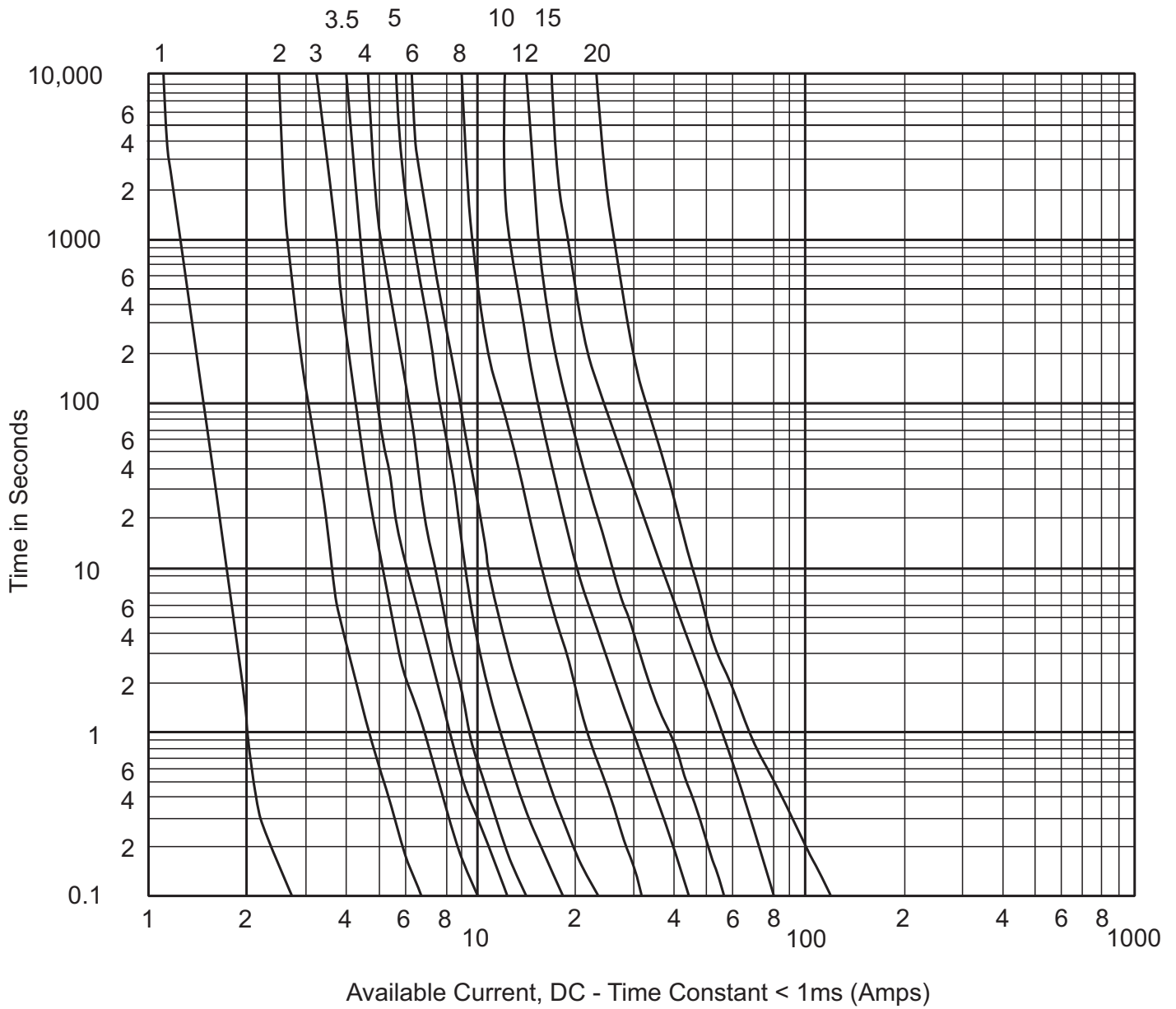
**Recommended tools**

- Sta-Kon terminal crimping tool, catalog # ERG4002

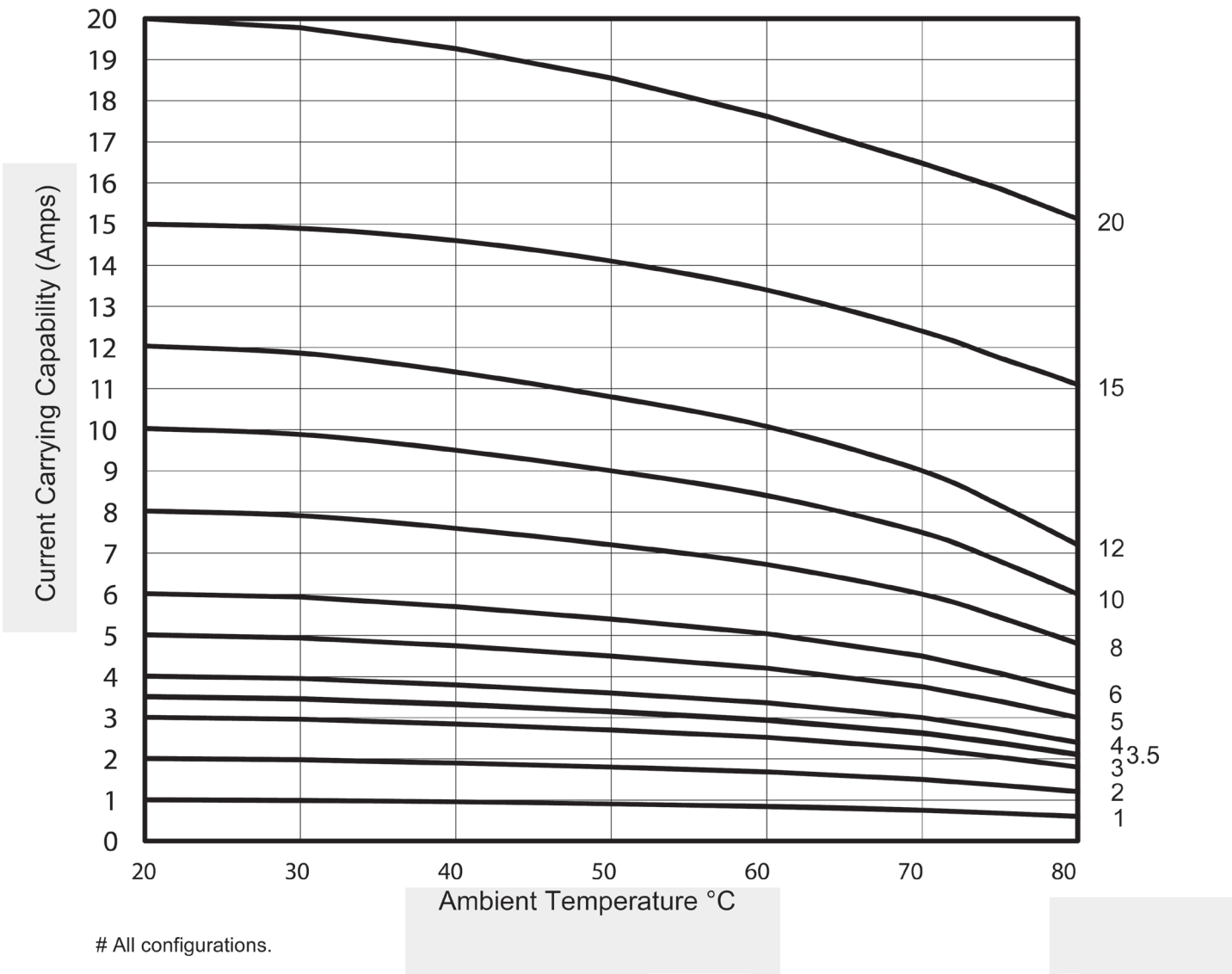
**Recommended fuse holders and fuseclips:**

Part number	Description and date sheet/brochure No.
CHPV1IU	1-Pole modular fuse holder with indication 3185
CHPV1U	1-Pole modular fuse holder without indication 3185
CHPV2IU	2-Pole modular fuse holder with indication 3185
CHPV2U	2-Pole modular fuse holder without indication 3185
1A3400_	PCB Fuseclips 2131
HPV-DV_A	In-line fuse holder assembly 2157

**Time-current characteristics — 1-20A**

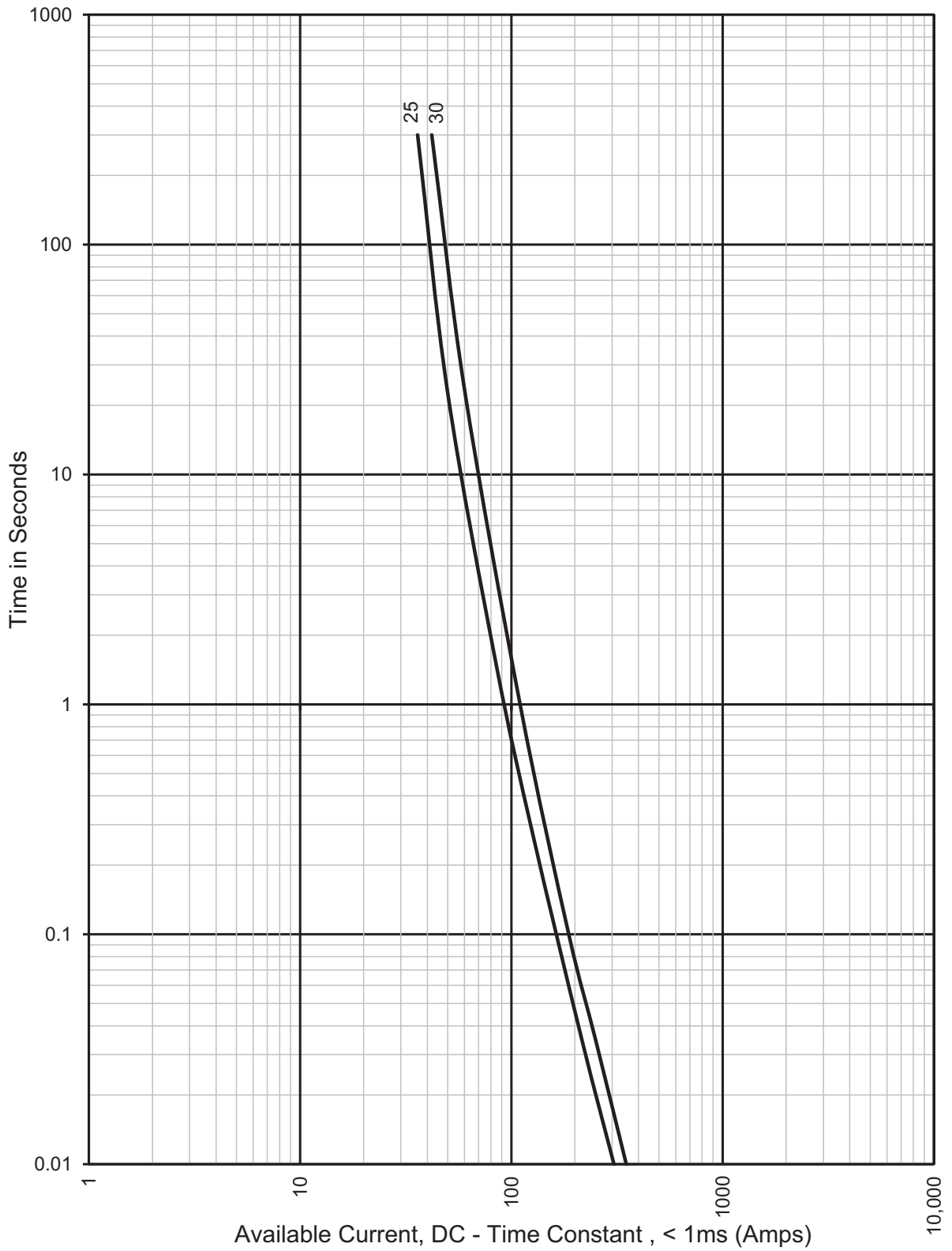


Temperature derating curves — 1-20A

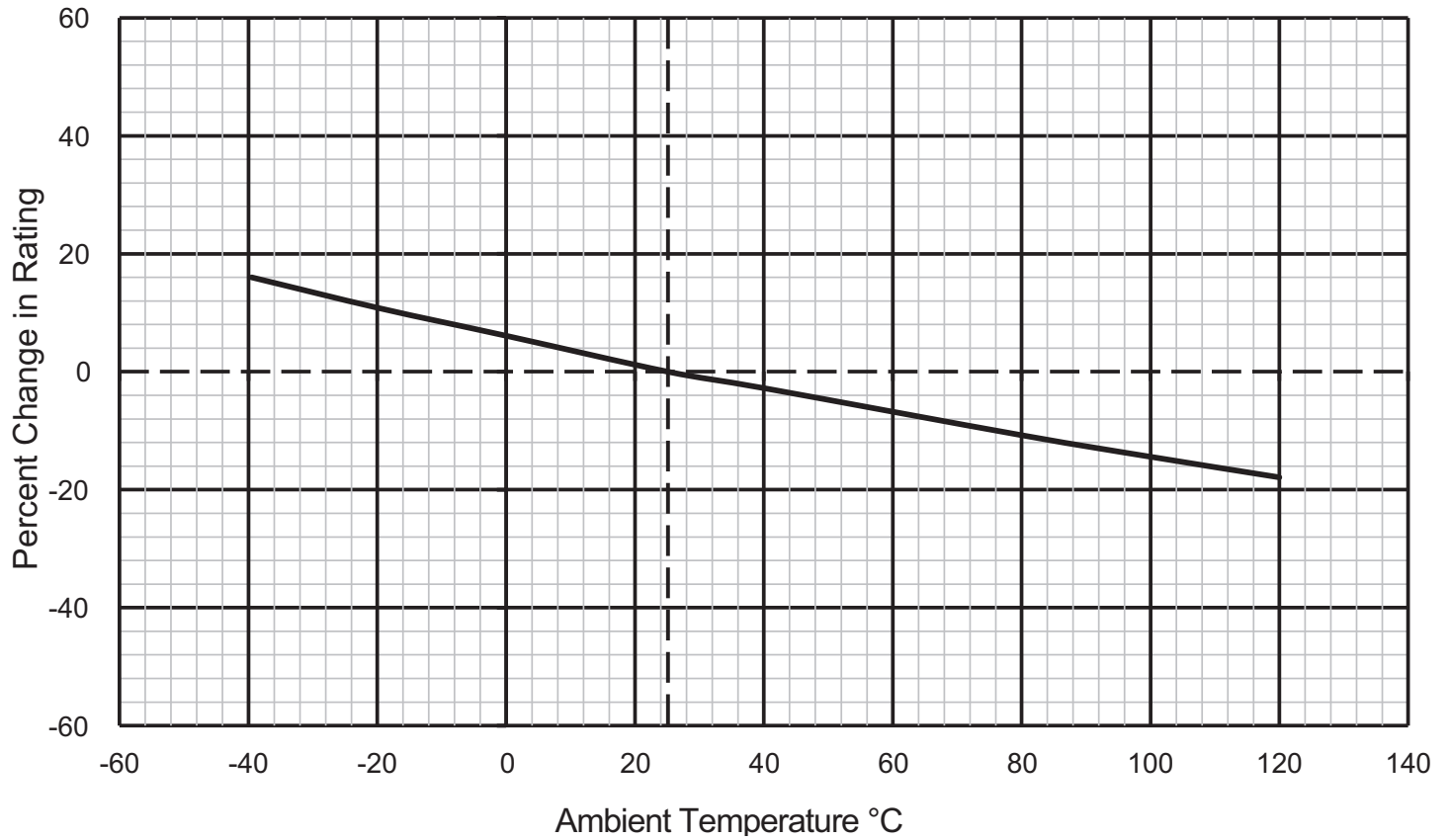


No additional derating is required for PV fuse links installed in ganged modular fuse holders without spacing between units, provided that the rating used is  $>1.56 \times I_{sc}$ .

**Time-current characteristics — 25-30A**



**Temperature derating curves — 25-30A**



The only controlled copy of this data sheet is the electronic read-only version located on the Eaton network drive. All other copies of this document are by definition uncontrolled. This bulletin is intended to clearly present comprehensive product data and provide technical information that will help the end user with design applications. Eaton reserves the right, without notice, to change design or construction of any products and to discontinue or limit distribution of any products. Eaton also reserves the right to change or update, without notice, any technical information contained in this bulletin. Once a product has been selected, it should be tested by the user in all possible applications.

**Eaton**  
1000 Eaton Boulevard  
Cleveland, OH 44122  
Eaton.com

Bussmann Division  
114 Old State Road  
Ellisville, MO 63021  
United States  
Eaton.com/bussmannseries

© 2015 Eaton  
All Rights Reserved  
Printed in USA  
Publication No. 10121 — BU-SB14107  
June 2015

Eaton is a registered trademark.  
All other trademarks are property  
of their respective owners.

