

8

7

6

5

4

3

REV

SCR NO.

-

55281

DESCRIPTION

NEW RELEASE

BY

B.B.

DATE

04/26/10

APPROVED

H.COOK

REV

SCR NO.

A

55347

ADDED NOTE 8, ADDED DIMENSIONS TO BOARD DETAIL FOR KEEPOUT AREA. UPDATED NOTE 2

BY

B.B.

DATE

06/22/10

APPROVED

H.COOK

NOTES:

1. REFER TO FOLLOWING TECH BULLETINS FOR VIPER PRODUCT SPECIFICATIONS:  
TB-2094: VIPER GENERAL PRODUCT SPECIFICATION  
TB-2095: VIPER CONNECTOR QUALIFICATION PLAN SUMMARY  
TB-2096: VIPER SIGNAL INTEGRITY CHARACTERIZATION REPORT  
TB-2097: VIPER SIGNAL TRACE ROUTING GUIDELINES BACKPLANE AND DAUGHTERCARD  
TB-2098: INSTALLATION OF RIGHT-ANGLE PRESSFIT VIPER DAUGHTERCARD CONNECTORS  
TB-2099: VIPER CONNECTOR REPAIR PROCEDURES  
TB-2100: VIPER BACKPLANE CONNECTOR PRESS-FIT INSTALLATION PROCESS

2. TYPICAL MODULE TRAY MARKING AS FOLLOWS:  
LINE 1: VJ776-10001 REV  
LINE 2: MFR: 55KX1 YYWW  
LINE 3: QTY

3. GUIDE PIN IS INTENDED FOR USE IN 6.35 [.250 in] MAX THICK BOARD. ALTERNATE GUIDANCE/KEY PIN AVAILABLE FOR DIFFERENT BACKPLANE THICKNESSES. CONSULT FACTORY FOR OPTIONS.

4. THIS CONFIGURATION AND HOLES ARE REQUIRED TO SUPPORT VITA 46 PRODUCT SPECIFICATION AND ARE NOT REQUIRED FOR VIPER PRODUCT LINE TO BE INSTALLED.

5. BACKPLANE KEYING TO BE SPECIFIED BY CUSTOMER WHEN ORDERING. IF NO KEYING SPECIFIED KEYS ARE BAGGED AND SHIPPED UNASSEMBLED WITH CONNECTOR.

6. Ø9.00 GROUND PAD PLATED AROUND GUIDE PIN MOUNTING HOLE ON TOP AND BOTTOM SIDES OF BOARD.

7. MATES WITH VP776-10001

8. REQUIRED KEEP OUT AREA FOR BACKPLANE MODULE INSTALLATION.

BACKPLANE PARTS LIST

ITEM	PART NUMBER	DESCRIPTION	MATERIAL/PLATING	QTY
1	344-5004-000	8 POSITION KEYING MODULE ASSEMBLY "J0"	INSULATOR: LCP UL94 V0 PER MIL-M-24519 CONTACTS: OLIN C7025 TMO3 PLATING:50µ IN. GOLD OVER 150µ IN. NICKEL TIN-LEAD ON COMPLIANTS	1
2	344-5002-000	16 POSITION KEYING MODULE DIFFERENTIAL ASSEMBLY "J2"	INSULATOR: LCP UL94 V0 PER MIL-M-24519 CONTACTS: OLIN C7025 TMO3 PLATING:50µ IN. GOLD OVER 150µ IN. NICKEL TIN-LEAD ON COMPLIANTS	1
3	344-5001-000	16 POSITION CENTER MODULE DIFFERENTIAL ASSEMBLY "J1", "J4" & "J5"	INSULATOR: LCP UL94 V0 PER MIL-M-24519 CONTACTS: OLIN C7025 TMO3 PLATING:50µ IN. GOLD OVER 150µ IN. NICKEL TIN-LEAD ON COMPLIANTS	3
4	344-5005-000	16 POSITION KEYING MODULE DIFFERENTIAL ASSEMBLY "J6"	INSULATOR: LCP UL94 V0 PER MIL-M-24519 CONTACTS: OLIN C7025 TMO3 PLATING:50µ IN. GOLD OVER 150µ IN. NICKEL TIN-LEAD ON COMPLIANTS	1
5	344-5011-000	16 POSITION END MODULE DIFFERENTIAL ASSEMBLY "J3"	STAINLESS STEEL, TYPE 303, PASSIVATED	1
6	564-0498-000	GUIDANCE/KEYING PIN	STAINLESS STEEL, TYPE 303, PASSIVATED	2
7	564-0508-000	SHORT CENTER GUIDANCE/KEYING PIN	STAINLESS STEEL, TYPE 303, PASSIVATED	1
8	800-7667-100	HEX NUT, METRIC, M5	316 STAINLESS STEEL, DIN 934	3
9	800-7668-100	FLAT WASHER, METRIC, M5	316 STAINLESS STEEL, DIN 125	3
10	800-7669-100	LOCK WASHER, METRIC, M5	316 STAINLESS STEEL, DIN 127B	3

GUIDE PIN KEYING REFERENCE

	GUIDE PIN POSITION "A"
	GUIDE PIN POSITION "B"
	GUIDE PIN POSITION "C"
	GUIDE PIN POSITION "D"
	GUIDE PIN POSITION "E"
	GUIDE PIN POSITION "F"
	GUIDE PIN POSITION "G"
	GUIDE PIN POSITION "H"

PROENGINEER PART

VJ77610001.ASSEM

PROENGINEER DRAWING

CVJ77610001

INTERPRET PER ASME Y14.5M

CODE IDENT 55KX1

TOLERANCES

0.0 ±.0.00 ±.0.000 ±.°

ANGLES ±.°

UNLESS OTHERWISE SPECIFIED DIMENSIONS ARE IN MILLIMETERS

DWN 01/04/10

T.DOUCET

CHK 04/23/10

R.CHIFFY

APVD 04/26/10

H.COOK

Amphenol Corporation

AMPHENOL BACKPLANE SYSTEMS

NASHUA, NH 03063

TITLE

VIPER VARIANT "C"

CONNECTOR, BACKPLANE

6U CONFIGURATION

PART NO.

VJ776-10001

DRAWING NO.

C-VJ776-10001

SIZE D SCALE 2/1

SHEET 1 OF 2

REV

A

REV

A

DWG NO. C-VJ776-10001

SH 1

REV A

D

C

B

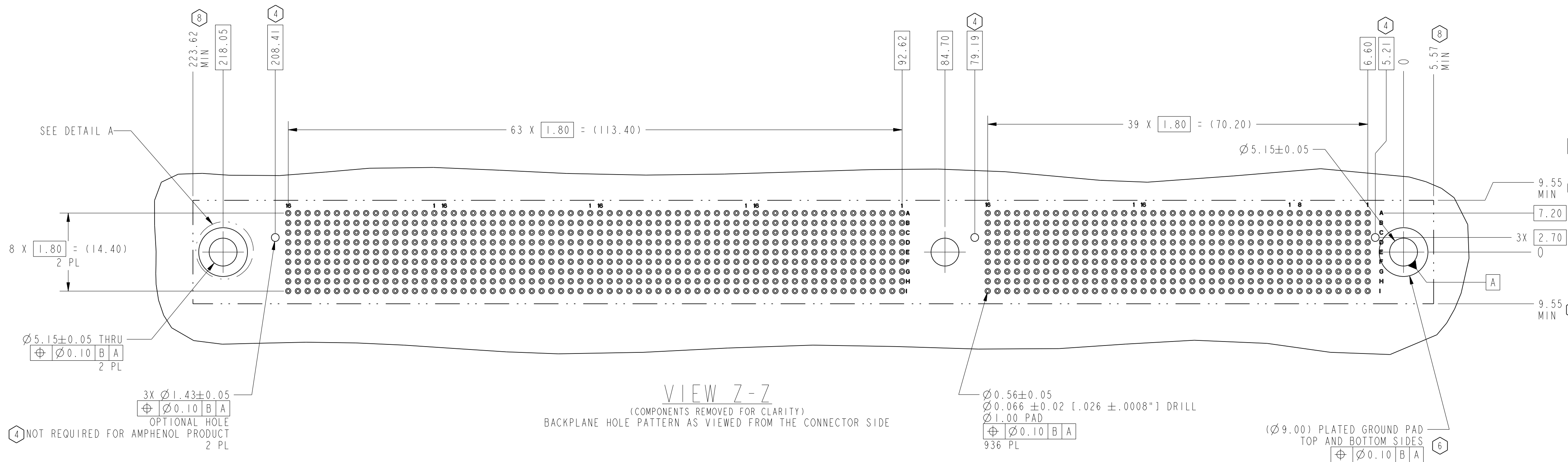
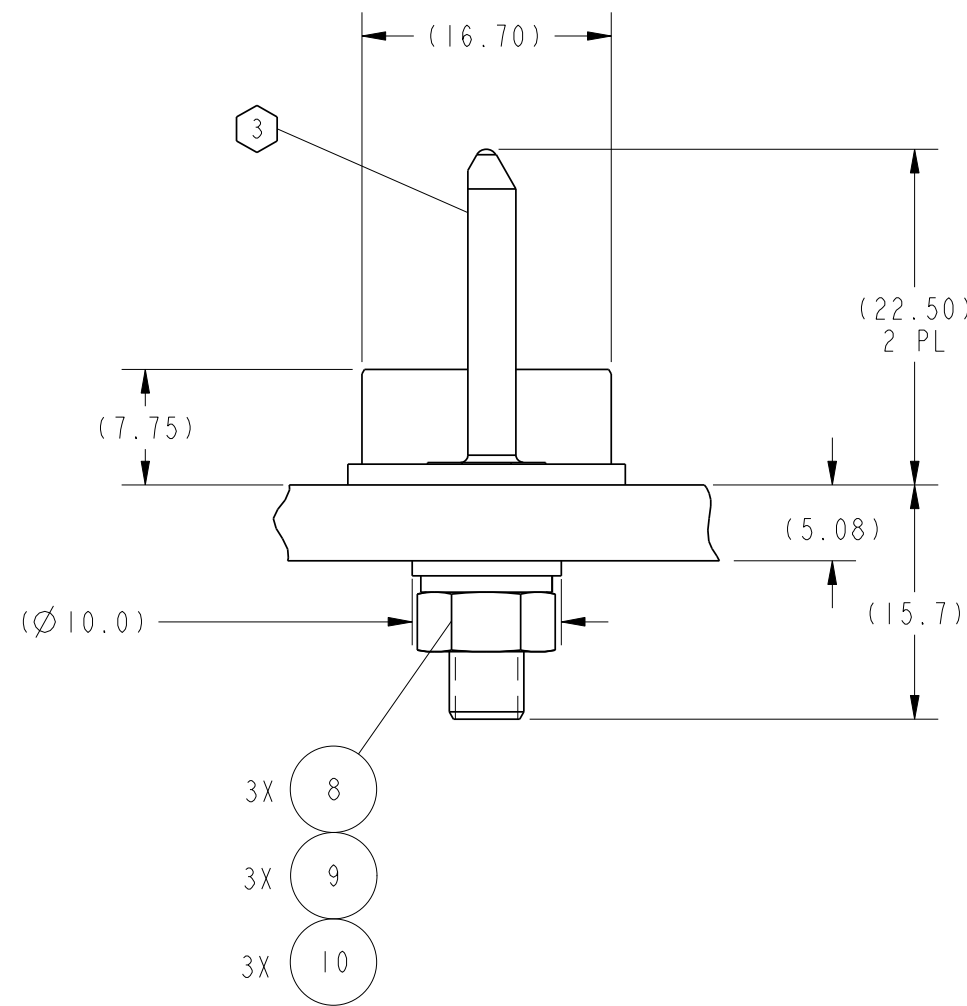
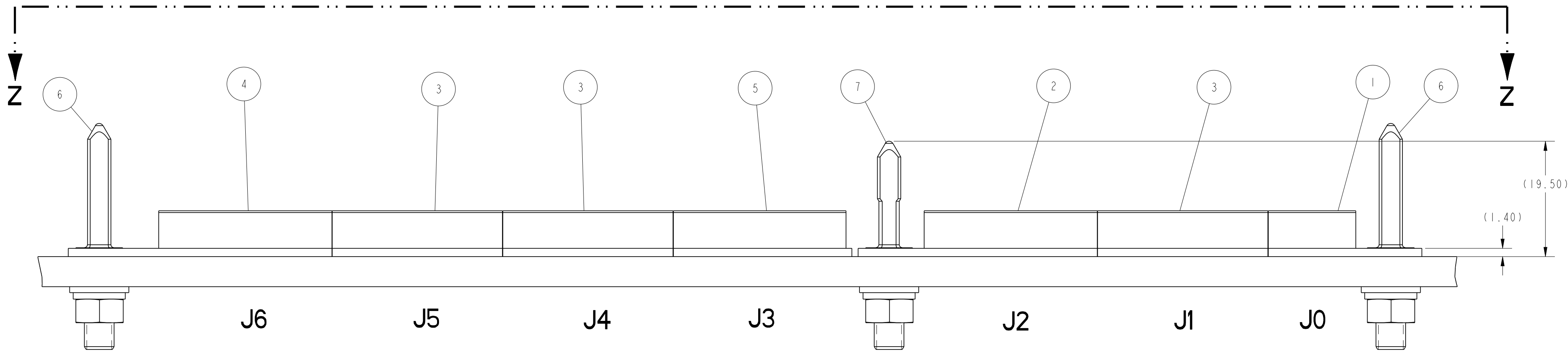
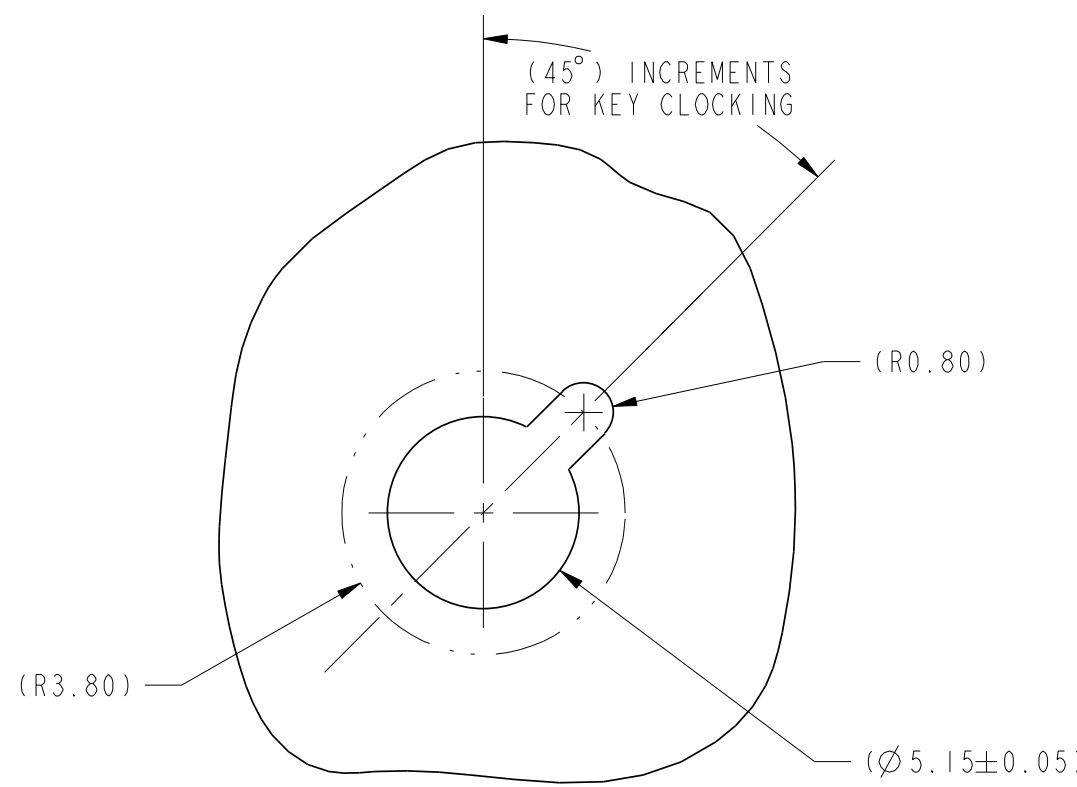
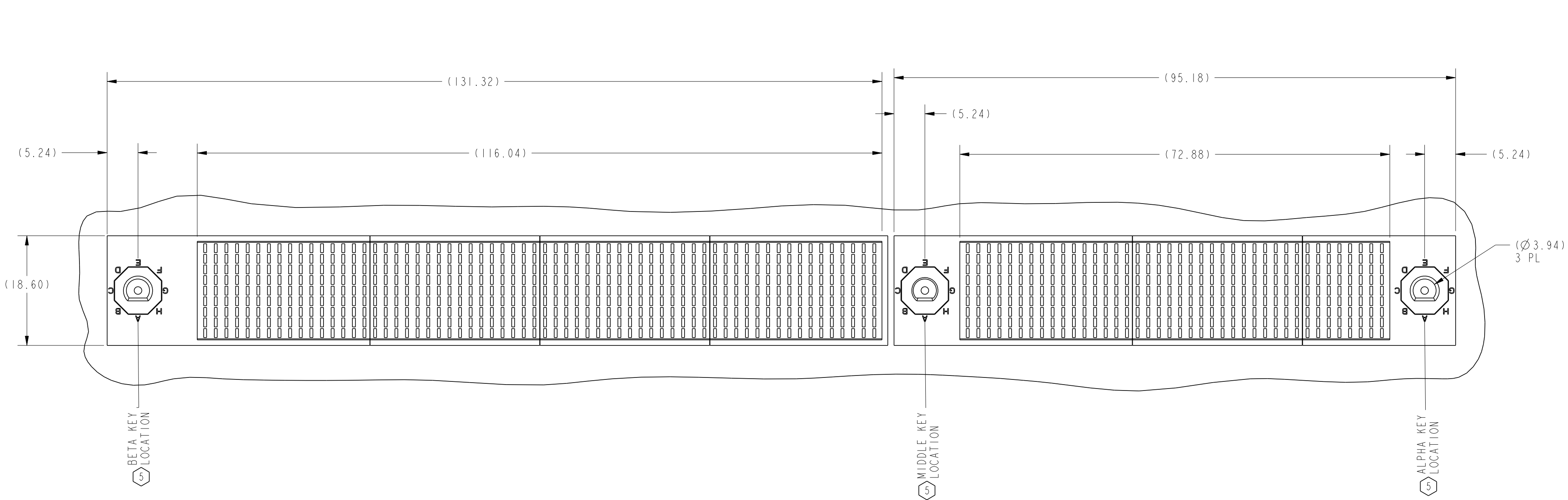
A

D

C

B

A



# Mouser Electronics

Authorized Distributor

Click to View Pricing, Inventory, Delivery & Lifecycle Information:

[Amphenol:](#)

[VJ776-10001](#)