

6A to 36A, 250VAC EMI Filters

Features

- ◆ High Attenuation Wide Band Two Stage Filter
- ◆ Screw Terminals with Cover
- ◆ Low Profile, Metal Case



Last time buy - June 1, 2014

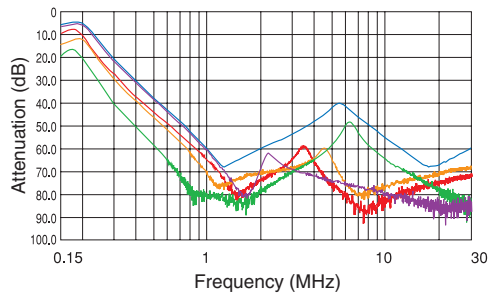
Specifications						
Model		MB1206	MB1210	MB1216	MB1220	MB1236
Rated Voltage (AC,DC)	V	250V				
Rated Current (AC,DC) (1)	A	6	10	16	20	36
Test Voltage (terminal to case, AC 1 min.)	V	2500V (20mA) at 25°C, 70% RH				
Isolation Resistance (terminal to case, 500VDC)	Ω	100M Ohms min. at 25°C, 70% RH				
Leakage Current	-	125V, 60Hz =0.5mA max.; 250V, 60Hz =1mA max.				
DC Resistance	mΩ	140	50	34	20	9
Temperature Rise	°C	40°C max.				
Operating Temperature (1)	°C	-25 to +85°C				
Operating Humidity	%	30% to 95% RH (non-condensing)				
Storage Temperature	°C	-40 to +85°C				
Storage Humidity	%	10% to 95% RH (non-condensing)				
Vibration	-	Sweep:10-55-10Hz (1min.), Amplitude 1.5mm X, Y, and Z axes, 2 hours each				
Safety Standard	-	UL1283, CSA C22.2 No.8 (C-UL), VDE0565 Teil3, Teil3A2, and EN133200 (VDE)				

Notes:

(1) Value at Ta ≤35°C. Refer to the derating curve at Ta > 35°C.

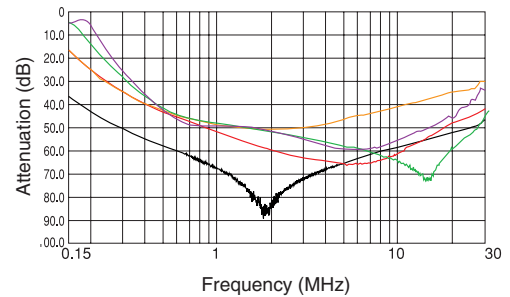
Typ. Insertion Loss, Symmetrical

MB1206 MB1210 MB1216 MB1220 MB1236

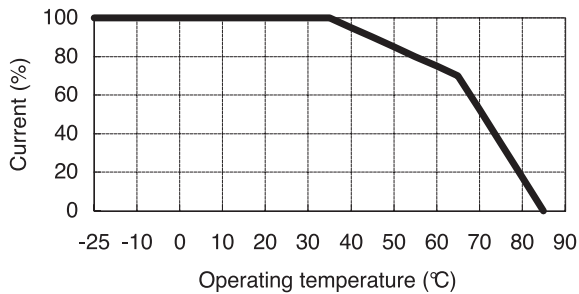


Typ. Insertion Loss, Asymmetrical

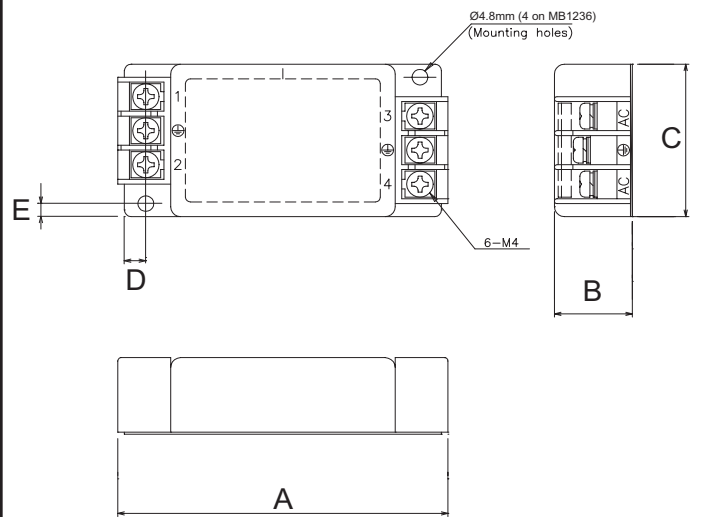
MB1206 MB1210 MB1216 MB1220 MB1236



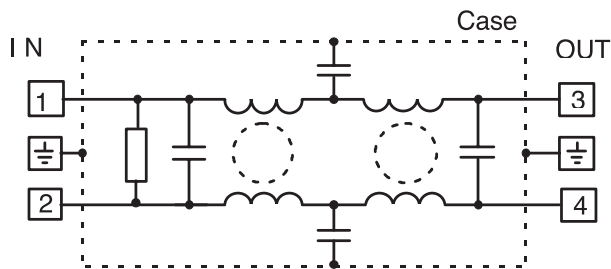
Derating



Outline Drawing



Circuit



Dimensions Table

Model	A	B	C	D	E	Weight (g)
MB1206	100	23.6	47	6.5	4	190
MB1210	107	26	47	6.5	4	220
MB1216	117	30	47	6.5	4	310
MB1220	151	35	52	6.5	4	530
MB1236	151	35	67	7.5	6.5	660

For Additional Information, please visit us.tdk-lambda.com/lp/products/mb-series.htm



Last time buy - June 1, 2014

Mouser Electronics

Authorized Distributor

Click to View Pricing, Inventory, Delivery & Lifecycle Information:

[TDK-Lambda:](#)

[MB1206](#) [MB1220](#) [MB1236](#) [MB1330](#) [MB1350](#) [MB1216](#) [MB1210](#)