

PRODUCT NUMBER

89898-XXXXHFLF

RoHS COMPATIBLE, SEE NOTE 6

OPTION LETTERS, NOTE 1b, OMIT FROM PRODUCT NUMBER IF NOT APPLICABLE

A=PRODUCT WITH GREY PICK UP CAP IN TAPE & REEL, SEE TA-856.

B=PRODUCT WITH PICK UP CAP PACKED IN TUBE.

G=PRODUCT WITH BLACK PICK UP CAP IN TAPE & REEL, SEE TA-856.

K=PRODUCT WITHOUT PICK UP CAP IN TAPE & REEL, SEE TA-856

NUMBER OF POSITIONS PER ROW: 02 TO 30.
OVER THAN 30 POSITIONS ON SPECIAL REQUEST.

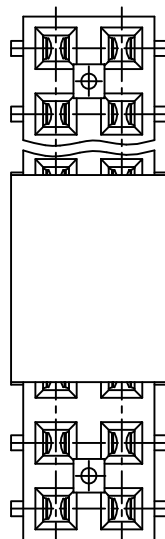
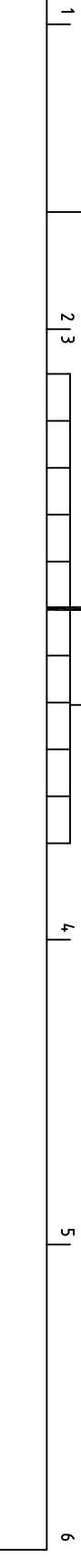
PLATING CODE

3= 0.76µm GOLD ON CONTACT AREA.

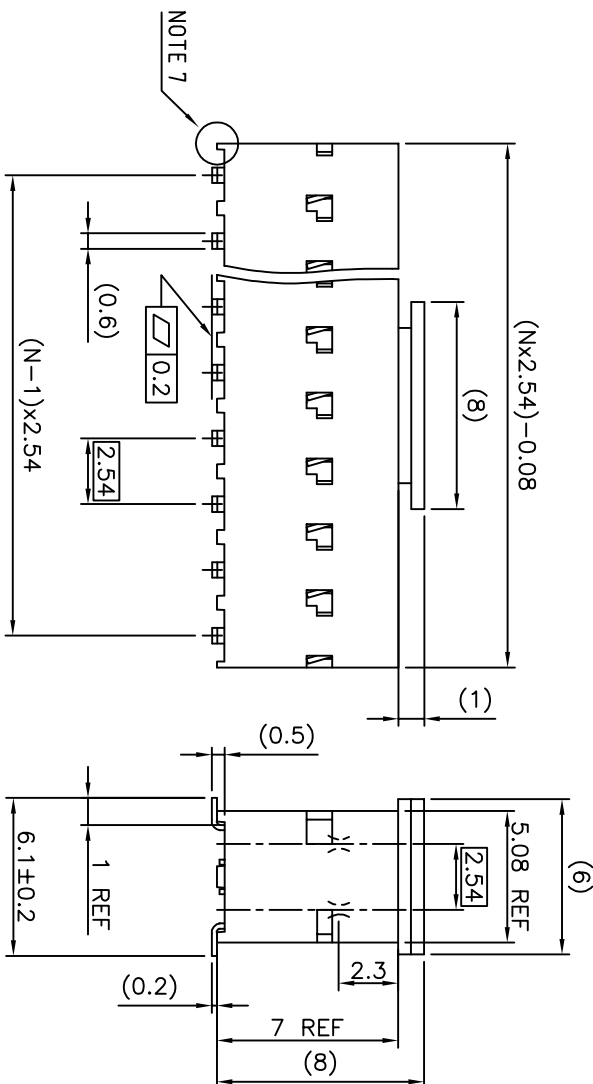
2µm MIN MATTE TIN ON TAIL.

4= 2µm MIN MATTE TIN FULL PLATED

1.27µm Ni MIN UNDERPLATING



OPTIONAL PICK UP CAP



NOTES:

1a- HOUSING & PICK UP CAP MAT'L: THERMOPLASTIC GLASS FILLED FLAME RETARDANT PER UL 94 V-0 COLOR: GREY.

b- HIGH TEMPERATURE PLASTIC 30% GLASS REINFORCED NON HALOGEN FLAME RETARDED MOLDING COMPOUND COLOR BLACK.

2 - TERMINAL MATERIAL: PHOSPHOR BRONZE.

3 - PACKAGING: 2 UP TO 4 POSITIONS. PRODUCT PACKED IN PLASTIC BOX. 5 UP TO 30 POSITIONS. PRODUCT PACKED IN TUBE.

4 - TO DETERMINE DIMENSIONS: N = NUMBER OF POSITIONS PER ROW

EXAMPLE: 8 POS: (N x 2.54) - 0.08 = 20.24 mm.

5 - RECOMMENDED IR PROFILE PER TA842.

6 - RoHS COMPATIBLE PRODUCT SPECIFICATIONS

d - PLATING:

- "L" MEANS THE PRODUCT IS LEAD-FREE, 2µm MINIMUM MATTE TIN OVER 1.27µm MINIMUM NICKEL UNDERPLATE.

b - MANUFACTURING PROCESS COMPATIBILITY

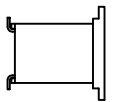
- THE HOUSING WILL WITHSTAND EXPOSURE TO 260°C PEAK TEMPERATURE FOR 30 SECONDS MAX IN A CONVECTION INFRA-RED OR VAPOR PHASE OR REFLOW OVEN.

c - LABELING:

- MEETS PACKAGING SPECS AS PER GS-14-920

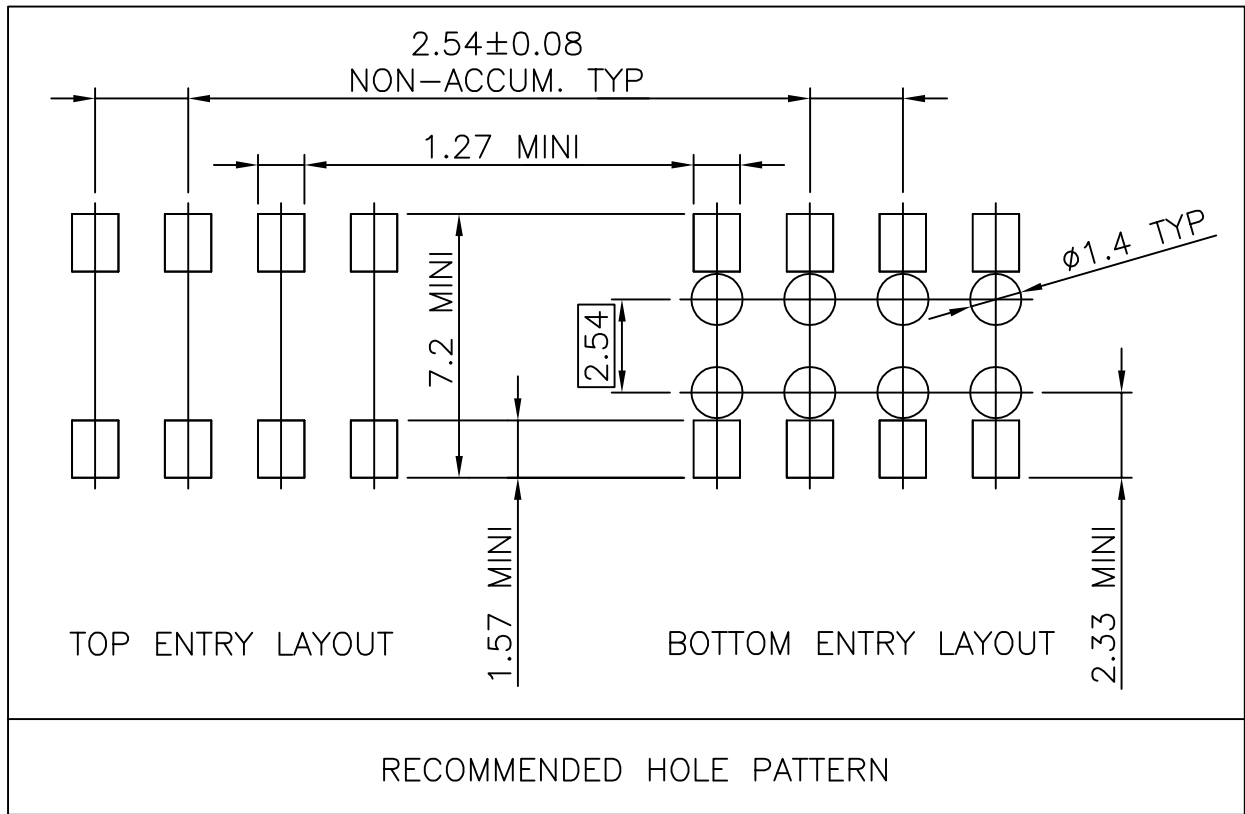
d - LEGAL STATEMENT: SEE GS-47-0004

7 - END STAND-OFFS FOR 2x2 UP TO 2x5 POS
NO END STAND-OFFS FOR 2x6 UP TO 2x50 POS



CAP ORIENTATION FOR 2x2 POSITIONS ONLY

mat'l. code	surface	tolerance	projection	product family
SEE NOTE 1 & 2	ISO 1302	ISO 406 ISO 1001	mm	DUBOX
thr ecn no	dr date	tolerance unless otherwise specified		title
AE F12-0047 JCO	12.07.16	angles		SMT
AF B-18748 LMU	14.09.04	linear		BTB RECEIPT.
AG B-19123 LMU	14.10.21	xxx #0.05	scale 5:1	
AB F09-0210 JCO	09.10.27	engr LM, PHAMVAN		89898
AC F11-0016 JCO	11.01.31	chr P, NIZI		CUSTOMER
AD F11-0043 JCO	12.02.22	qppd LM, P		Drwng
sheet	revision	AG	C	
index	sheet	1	2	



RECOMMENDED HOLE PATTERN



FCIconnect.com

mat'l. code SEE NOTE 1 & 2				surface ISO 1302 ✓		tolerance ISO 406 ISO 1101		projection 		product family DUBOX					
ltr	ecn no	dr	date	tolerances unless otherwise specified				mm 		title SMT BtB RECEPT.					
A	F04-0347	DLE	04.11.10	angles	linear		.x ±0.3		scale 5:1						
B	F06-0204	DLE	06.06.23		linear		.xx ±0.13								
C	F11-0016	JCO	11.01.31	linear		.xxx ±0.05									
				dr	P.NIZZI		95.06.21				dwg no		sheet 2 of -	size	
				enr	JM.PHAMVAN		95.06.21				89898		A4		
				chr	P.NIZZI		95.06.21				type		CUSTOMER Drawing		
				appd	JM.P		95.06.21								
sheet index		revision sheet													

Copyright FCI