

SERIES 71

.375" PCB Low Profile Barrier Terminal Strip

Description

The series 71 PCB terminal strip is the low profile alternative to our popular series 72. The .375" terminal strip is only .56" high yet is rated for 20 Amps.

The terminal block can be supplied with a wide variety of terminal styles and lengths, screw options and hardware.

Made in the USA, all Beau terminal blocks embody the highest quality standards in the industry-using the finest materials and world class manufacturing processes. They meet or exceed all applicable industry standards.

Features

- **Low profile** and rated for 20 Amps. The .56" high series 71 can handle 12 AWG wire and a full 20 Amps without the additional expense of wire clamp screws.
- **Molded to exact length**, with no ugly saw cuts, Beau terminal strips make your products look more professional. The terminal block is the one component that your customer is sure to see.
- **Wide variety of options.** Our broad range of screw, terminal, hardware and mounting options allows us to save you assembly costs and improve interconnect performance.



PRODUCT RATINGS

#6-32 BINDING HEAD SCREW

UL	Class B	15 Amps @ 300 V 14 AWG
	Class C	15 Amps @ 150 V 14 AWG
CSA	Class B	20 Amps @ 150 V 14 AWG
	Class C	20 Amps @ 150 V 14 AWG

#6-32 WIRE CLAMP SCREW

UL	Class B	25 Amps @ 300 V 12 AWG
	Class C	25 Amps @ 150 V 12 AWG
CSA	Class B	25 Amps @ 150 V 12 AWG
	Class C	25 Amps @ 150 V 12 AWG

NOTE: 3.5M screws carry #6-32 screw ratings.

TECHNICAL SPECIFICATIONS

ELECTRICAL

DWV	8500 VDC
IR	>5000 Megohms

MECHANICAL

Tightening torque	12 in.-lbs.
Maximum torque	13 in.-lbs.
Wire strip length	5/16"
Wire range	12 to 24 AWG

ENVIRONMENTAL

Continuous Use Temp	
RTI electrical	110°C
RTI mechanical w/o impact	110°C

APPROVALS

UL	File No. E48521
	Guide No. XCFR2
CSA	File No. 025562

MATERIALS

Insulator	Thermoplastic, UL94V-0, black
Terminal	Brass, tin-lead plate
Screws	#6-32, phillips/slotted, steel, zinc chromate plate

OPTIONS

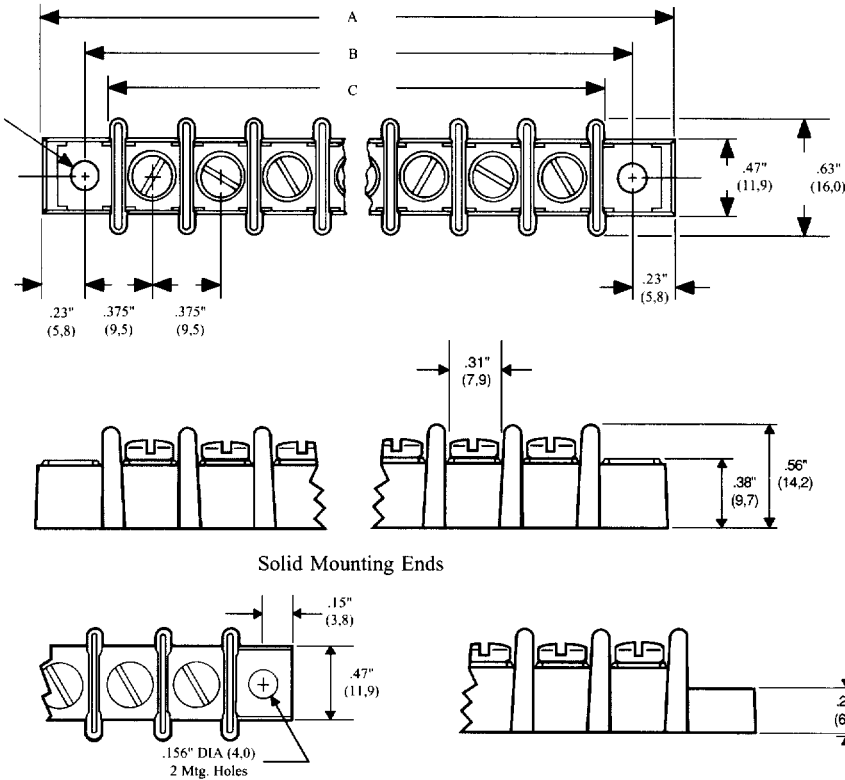
-45	Slotted screw
-45-56	Stainless steel screws, slotted
-47	Screws up, wire ready
-49	Brass, phillips/slotted screw
-50	Clamp washer, phillips/slotted screw
-58	No screws, barrier only
-59	Screws supplied unassembled
-C	No mounting ends
-E	Solid mounting ends
-F	Rap-attach mounts
-M	3.5 M screw, slotted
-P	.040" standoff pads
-V	130°C insulator

HOW TO ORDER

7	1	X	X	X	X
SERIES	TERMINAL STYLE	NO. OF POLES	OPTIONS		
	123	2 to 26	(Dash #'s above and		
	567		opposite page)		
	89				

*Consult factory for combinations of screw options.

SERIES 71



Solid Mounting Ends

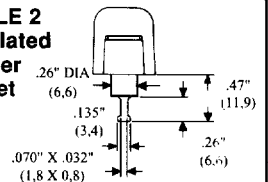
No. of Circuits	A		B		C	
	in.	mm	in.	mm	in.	mm
2	1.58	40,1	1.13	28,7	.832	21,1
3	1.96	49,8	1.50	38,1	1.21	30,7
4	2.33	59,2	1.88	47,8	1.58	40,1
5	2.71	68,8	2.25	57,2	1.96	49,8
6	3.08	78,2	2.63	66,8	2.33	59,2
7	3.46	87,9	3.00	76,2	2.71	68,8
8	3.83	97,3	3.38	85,9	3.08	78,2
9	4.21	107	3.75	95,3	3.46	87,9
10	4.58	116	4.13	105	3.83	97,3
11	4.96	126	4.50	114	4.21	107
12	5.33	135	4.88	124	4.58	116
13	5.71	145	5.25	133	4.96	126
14	6.08	154	5.63	143	5.33	135
15	6.46	164	6.00	152	5.71	145
16	6.83	173	6.38	162	6.08	154
17	7.21	183	6.75	171	6.46	164
18	7.58	193	7.13	181	6.83	173
19	7.96	202	7.50	191	7.21	183
20	8.33	212	7.88	200	7.58	193
21	8.71	221	8.25	210	7.96	202
22	9.08	231	8.63	219	8.33	212
23	9.46	240	9.00	229	8.71	221
24	9.83	250	9.38	238	9.08	231
25	10.21	259	9.75	248	9.46	240
26	10.58	269	10.13	257	9.83	250

TERMINAL STYLES

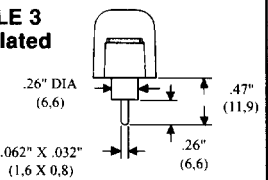
STYLE 1
No PC
Terminal



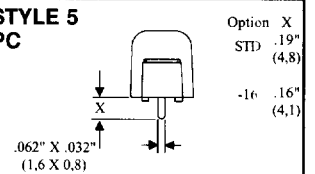
STYLE 2
Insulated
Solder
Turret



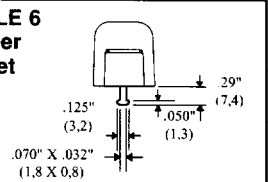
STYLE 3
Insulated
PC



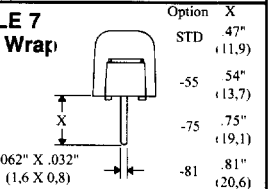
STYLE 5
PC



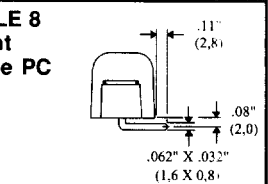
STYLE 6
Solder
Turret



STYLE 7
Wire Wrap



STYLE 8
Right
Angle PC



STYLE 9
Insulated
Quick
Connect

