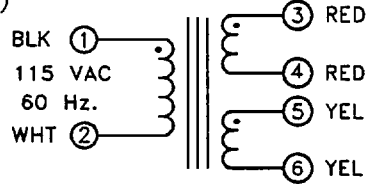




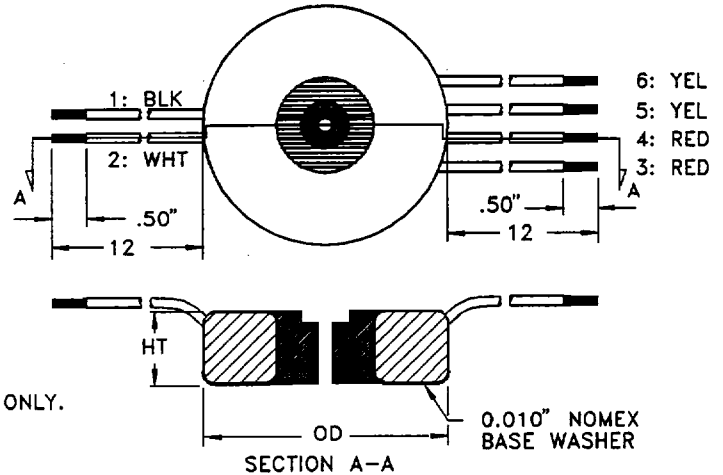
LARGEST SELECTION OF HEAVY DUTY 60Hz. TOROIDAL POWER TRANSFORMERS.

SOME ADVANTAGES OF TOROIDAL POWER TRANSFORMERS COMPARED TO LAMINATED TRANSFORMERS.

- Higher efficiency (Save Energy)
- Lower Mechanical hum.
- Lower electrical noise
- Lower Magnetic leakage
- Easier to electrostatically shield.
- Lower weight
- Smaller dimensions
- And most important price competitive compared to old fashioned laminated transformers.



208, 220 OR 230 VAC PRIMARY
ON REQUEST
PIN NUMBERS ARE FOR REFERENCE ONLY.



Part Number	Load Voltage	Load Current	Part Number	Load Voltage	Load Current	Part Number	Load Voltage	Load Current	Part Number	Load Voltage	Load Current	Part Number	Load Voltage	Load Current
7.5VA Series, 2.2" x 1.1" 0.41#, 21% regulation.			1086	28	1.07	1148	2x9	5.55	1206	28	7.14	1269	2x12	20.83
1001	9	0.83	1087	2x9	1.67	1149	2x12	4.17	1207	115	1.74	1270	2x15	16.67
1002	12	0.63	1088	2x12	1.25	1150	2x15	3.33	1208	2x9	11.11	1271	2x18	13.89
1003	15	0.50	1089	2x15	1.00	1151	2x18	2.78	1209	2X12	8.33	1272	2x24	10.42
1004	18	0.42	1090	2x18	0.83	1152	2x24	2.08	1210	2x15	6.67	1273	2x28	8.93
1005	24	0.31	1091	2x24	0.63	1153	2x28	1.79	1211	2x18	5.56	1274	2X48	5.21
1006	28	0.27	1092	2x28	0.54	1154	2X48	1.04	1212	2x24	4.17	1275	2X57.5	4.35
10VA Series, 2.4" x 1.1" 0.53#, 20% regulation.			50VA Series, 3.2" x 1.3" 1.34#, 16% regulation.			120VA Series, 3.8" x 1.4" 2.24#, 14% regulation.			300VA Series, 4.8" x 2.0" 5.2 #, 6 % regulation.			750VA Series, 6.0" x 2.7" 11.6#, 5 % regulation.		
1021	9	1.11	1101	9	5.56	1161	9	13.33	1222	12	25.00	1285	24	31.25
1022	12	0.83	1102	12	4.17	1162	12	10.00	1223	15	20.00	1286	28	26.79
1023	15	0.67	1103	15	3.33	1163	15	8.00	1224	18	16.67	1287	115	6.52
1024	18	0.56	1104	18	2.78	1164	18	6.67	1225	24	12.50	1289	2X12	31.25
1025	24	0.42	1105	24	2.08	1165	24	5.00	1226	28	10.71	1280	2x15	25.00
1026	28	0.36	1106	28	1.79	1166	28	4.29	1227	115	2.61	1291	2x18	20.83
15VA Series, 2.5" x 1.1" 0.64#, 1% regulation.			1107	115	0.43	1167	115	1.04	1228	2x9	16.67	1292	2x24	15.63
1041	9	1.67	1108	2x9	2.78	1168	2x9	6.67	1229	2X12	12.50	1293	2x28	13.39
1042	12	1.25	1109	2x12	2.08	1169	2X12	5.00	1230	2x15	10.00	1294	2X48	7.81
1043	15	1.00	1110	2x15	1.67	1170	2x15	4.00	1231	2x18	8.33	1295	2X57.5	6.52
1044	18	0.83	1111	2x18	1.39	1171	2x18	3.33	1232	2x24	6.25	1296	2X115	3.26
1045	24	0.63	1112	2x24	1.04	1172	2x24	2.50	1233	2x28	5.36	1 kVA Series, 6.8" x 2.7" 15.9#, 4% regulation.		
1046	28	0.54	1113	2x28	0.89	1173	2x28	2.14	1234	2X48	3.13	1307	115	8.70
1047	2x9	0.83	1114	2X48	0.52	1174	2X48	1.25	1235	2X57.5	2.61	1311	2x18	27.78
1048	2x12	0.63	1115	2X57.5	0.43	1175	2X57.5	1.04	1236	2X115	1.30	1312	2x24	20.83
1049	2x15	0.50	1116	2X115	0.22	1176	2X115	0.52	400VA Series, 5.2" x 2.2" 7.2 #, 6 % regulation.			1313	2x28	17.86
1050	2x18	0.42	75VA Series, 3.3" x 1.4" 1.74#, 14% regulation.			150VA Series, 4.2" x 1.5" 3.56#, 8% regulation.			1243	15	26.67	1314	2X48	10.42
1051	2x24	0.31	1121	9	8.33	1181	9	16.67	1244	18	22.22	1315	2X57.5	8.70
1052	2x28	0.27	1122	12	6.25	1182	12	12.5	1245	24	16.67	1316	2X115	4.35
25VA Series, 2.8" x 1.2" 0.85#, 18% regulation.			1123	15	5.00	1183	15	10.0	1246	28	14.29	1.5kVA Series, 7.1" x 3.4" 22#, 4% regulation.		
1061	9	2.78	1124	18	4.17	1184	18	8.33	1247	115	3.48	1317	115	13.04
1062	12	2.08	1125	24	3.13	1185	24	6.25	1248	2x9	22.22	1322	2x24	31.25
1063	15	1.67	1126	28	2.68	1186	28	5.36	1249	2x12	16.67	1323	2x28	26.78
1064	18	1.39	1127	115	0.65	1187	115	1.30	1250	2x15	13.33	1324	2X48	15.63
1065	24	1.04	1128	2x9	4.17	1188	2x9	8.33	1251	2x18	11.11	1325	2X57.5	13.04
1066	28	0.89	1129	2x12	3.13	1189	2x12	6.25	1252	2x24	8.33	1326	2X115	6.52
1067	2x9	1.39	1130	2x15	2.50	1190	2x15	5.00	1253	2x28	7.14	2.5kVA Series, 7.8" x 4.4" 3.3 #, 3% regulation.		
1068	2x12	1.04	1131	2x18	2.08	1191	2x18	4.17	1254	2X48	4.17	1327	115	21.74
1069	2x15	0.83	1132	2x24	1.56	1192	2x24	3.13	1255	2X57.5	3.48	1334	2X48	26.04
1070	2x18	0.69	1133	2x28	1.34	1193	2x28	2.68	1256	2X115	1.74	1335	2X57.5	21.74
1071	2x24	0.52	1134	2X48	0.78	1194	2X48	1.56	500VA Series, 5.5" x 2.3" 8.2 #, 6% regulation.			1336	2X115	10.87
1072	2x28	0.45	1135	2X57.5	0.65	1195	2X57.5	1.30	1263	15	33.33	6.0kVA Series, 10.5" x 5.0" 77 #, 2% regulation.		
30VA Series, 2.8" x 1.3" 0.98#, 16% regulation.			1136	2X115	0.33	1196	2X115	0.65	1264	18	27.78	1356	2X115	26.09
1081	9	3.33	100VA Series, 3.8" x 1.4" 2.24#, 12% regulation.			200VA Series, 4.5" x 1.9" 4.30#, 7% regulation.			1265	24	20.83	9.0kVA Series, 11.7" x 6.0" 116 #, 2% regulation.		
1082	12	2.50	1141	9	11.11	1201	9	22.22	1266	28	17.86	1376	2X115	39.13
1083	15	2.00	1142	12	8.33	1202	12	16.67	1267	115	4.35			
1084	18	1.67	1143	15	6.67	1203	15	13.33	1268	2x9	27.78			
1085	24	1.25	1144	18	5.55	1204	18	11.11						
			1145	24	4.17	1205	24	8.33						
			1146	28	3.57									
			1147	115	0.87									

NOTE: Mechanical dimensions and electrical data accurate to within ±3%.
Semi Epoxy Molded: Add 0.20" OD & 0.09" HT. Full Epoxy Molded: Add 0.20" OD & HT.