

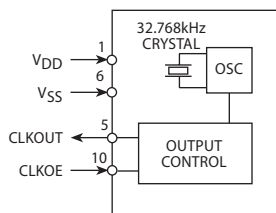
PAD	CONNECTION	PAD	CONNECTION
1	Supply (VDD)	6	Ground
2	Not connected	7	Not connected
3	Not connected	8	Not connected
4	Not connected	9	Not connected
5	Frequency output (CLKOUT)	10	FOUT output enable (CLKOE)

Scale 3:1

Features

- ▶ **Tight frequency tolerance**
- ▶ **Low power consumption**
- ▶ **Low ageing**
- ▶ **High shock and vibration resistance**
- ▶ **Miniature ceramic SON 10-pin package**

Block Diagram



Specifications

Parameters	Product	Option Codes
	OV1564C2	
Frequency:	32.7680kHz	■
Calibration tolerance:	±10ppm ±20ppm Other	□ ■ □ A B specify
Turnover temperature (T₀):	+25°C ±5°C	■
Frequency / temp coefficient:	-0.035ppm/°C ² ±10%	■
Operating temperature range:	-40 to +85°C	■
Storage temperature range:	-55 to +125°C	■
Supply voltage (V_{DD}):	Operable from 1.2 ~ 5.5V	■
Supply current:	1.5µA typ, 2µA max (V _{DD} = 3V, no load)	■
Supply current (backup mode):	0.25µA max, 0.5µA max (V _{DD} = 3V, output disabled)	■
Driving ability:	CMOS	■
Start up time:	350ms typ, 700ms max (V _{DD} = 3V)	■
Enable / disable function:	Tristate (control via pad 10)	■
Ageing:	±3ppm max first year	■
Shock and vibration resistance:	±5ppm, 5,000g, 0.3ms, ½ sine ±5ppm, 20g, 10.0 ~ 2,000Hz	■ ■
Soldering condition:	Reflow, 260°C, 20 sec max	■

■ Standard. □ Optional - Please specify required code(s) when ordering

Enable / Disable Function

Input (pad 10)	Output (pad 5)
Open	Enabled
'1' level	Enabled
'0' level	High Impedance

Ordering Information

Product + option code

eg: **OV1564C2/B** ±20ppm (standard)

Option code X (eg OV1564C2/X) denotes a custom spec.

- ◆ Available on T&R - 1.5k, 3.5k or 7k pcs per reel.
- ◆ Refer to our website for T&R and soldering details.