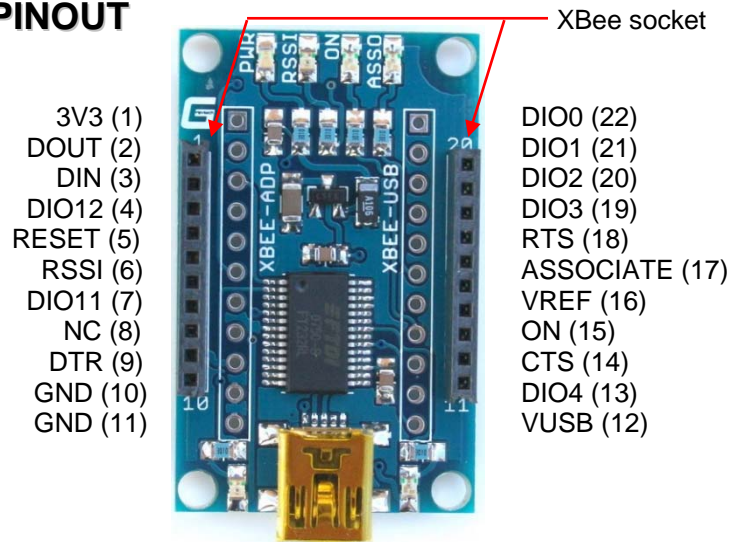


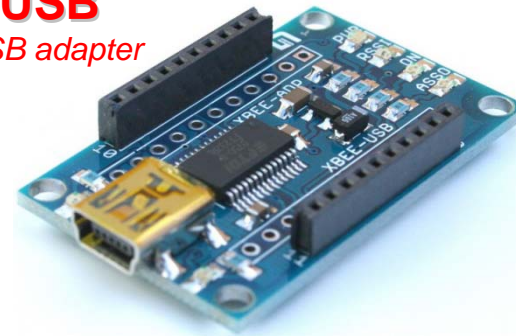
PINOUT



* See schematic for more detail.

XBee-USB

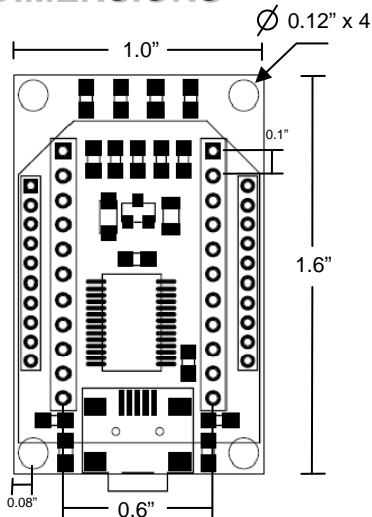
XBee to USB adapter



Copyright © 2008 Gravitech
WWW.GRAVITECH.US

electronic experimental solutions

DIMENSIONS

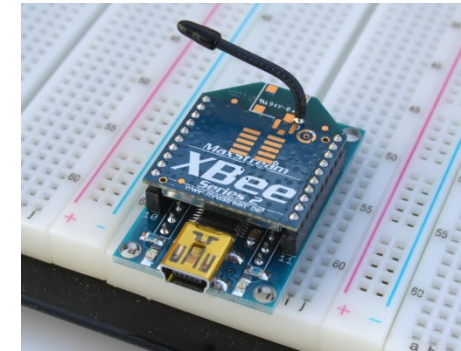


FEATURES

- Works with all XBee modules including the Series 1, Series 2, and Series 2.5; standard and Pro.
- No external power needed.
- Support USB 1.0 and 2.0
- Low USB bandwidth consumption
- 256/128 bytes receive/transmit buffer
- 0.1" spacing (breadboard friendly)
- On-board 3.3V 250mA voltage regulator (can be use to power external devices)
- TX and RX communication LEDs
- PWR, RSSI, ON, and ASSOCIATE LEDs
- Accessibility to every Xbee pin
- Works with X-CTU software from Digi Int.
- Support Windows 98, 98SE, ME, 2000, Server 2003, XP, Vista. Mac OS8/9, OS-X and Linux 2.4 and greater.

DESCRIPTION

It is the most easiest and reliable way to connect the Xbee module to a PC via USB port. It can be use as a communication point or a programmer for Xbee module using X-CTU software. There are six LEDs on this board to help you monitoring and quickly troubleshooting.



XBee, XBeePRO and X-CTU are Trademarks of Digi International Inc.

Mouser Electronics

Authorized Distributor

Click to View Pricing, Inventory, Delivery & Lifecycle Information:

[Gravitech:](#)

[XBee-USB](#)