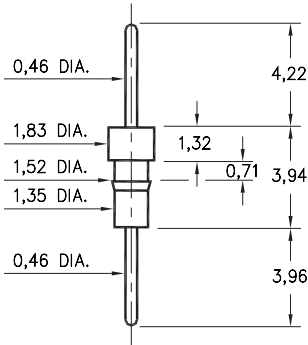


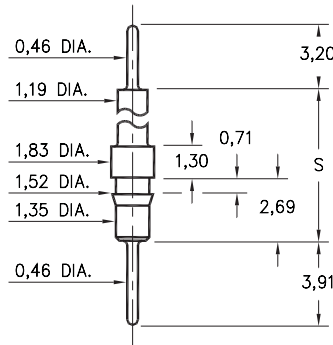
0504/0505



Basic Part Number	Pin Material
0504-0	Ph Br. 544
0505-0	Brass 360

050X-0-00-XX-00-00-03-0
Press-fit in 1,45 mounting hole

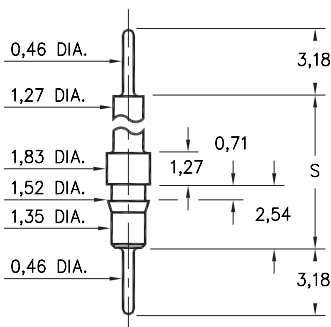
5510/5511



Basic Part Number	Standoff Height S
5510-0	8,41
5511-0	15,39

551X-0-00-XX-00-00-03-0
Press-fit in 1,45 mounting hole

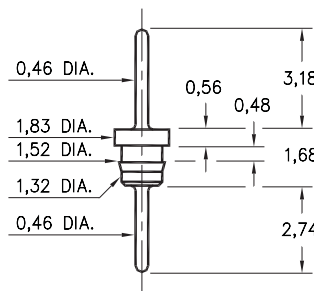
4259



Basic Part Number	Standoff Height S
4259-1	5,33
4259-2	8,51
4259-3	14,86
4259-4	21,21

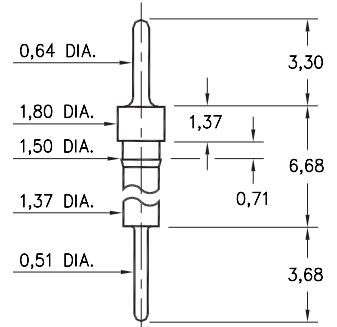
4259-X-00-XX-00-00-03-0
Press-fit in 1,45 mounting hole

3516



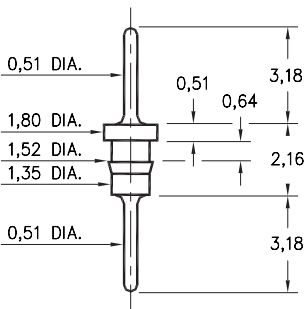
3516-0-00-XX-00-00-03-0
Press-fit in 1,45 mounting hole

8859



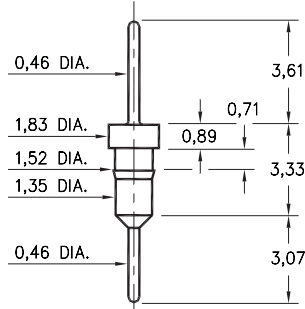
8859-0-00-XX-00-00-03-0
Press-fit in 1,42 mounting hole

6585



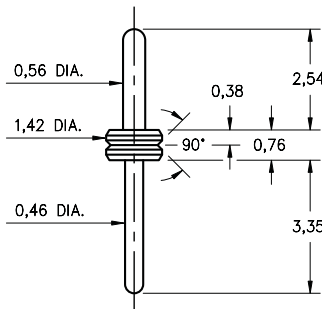
6585-0-00-XX-00-00-03-0
Press-fit in 1,45 mounting hole
Pin material is Ph Br 544 (B2)

3404



3404-0-00-XX-00-00-03-0
Press-fit in 1,45 mounting hole

3169



3169-0-00-15-00-00-03-0
V-Groove Header Pin
Also available on Kapton Tape

SPECIFICATIONS

PIN MATERIAL:
Brass Alloy 360, 1/2 Hard
(Except where noted)

DIMENSION IN INCHES
TOLERANCES ON:
LENGTHS: ±0,13
DIAMETERS: ±0,05
ANGLES: ± 2°

ORDER CODE: XXXX - X - 00 - XX - 00 - 00 - 03 - 0

BASIC PART #

SPECIFY PIN FINISH:

- 01 5,08µm TIN/LEAD OVER NICKEL
- ◇ 80 5,08µm TIN OVER NICKEL (RoHS)
- ◇ 15 0,25µm GOLD OVER NICKEL (RoHS)
- ◇ 21 0,51µm GOLD OVER NICKEL (RoHS)
- ◇ 34 1,27µm GOLD OVER NICKEL (RoHS)

