

PART NAME NON-METALLIC ENCLOSURE (STYLE D)

PART No. NBD-10442 & NBD-10462 & NBD-15442

**MATERIAL:**

INDOOR VERSION

SOLID BODY & COVER \_\_\_\_\_ ABS/PC BLENDED PLASTIC  
UL94-5VB FLAMMABILITY RATING

CLEAR COVER \_\_\_\_\_ POLYCARBONATE PLASTIC  
UL94V-0 FLAMMABILITY RATING  
UV STABILIZED

OUTDOOR VERSION

SOLID BODY & COVER \_\_\_\_\_ PBT/PC BLENDED PLASTIC  
UL94-5VA FLAMMABILITY RATING  
UV STABILIZED

**FINISH:**

BODY \_\_\_\_\_ LIGHT GRAY  
COVER \_\_\_\_\_ LIGHT GRAY OR CLEAR

COVER INCLUDES GRAY POLYURETHANE GASKET.

**NOTE:** COVER ATTACHES WITH PHILLIPS DRIVE  
NON-METALLIC SCREWS. (NOT SHOWN)

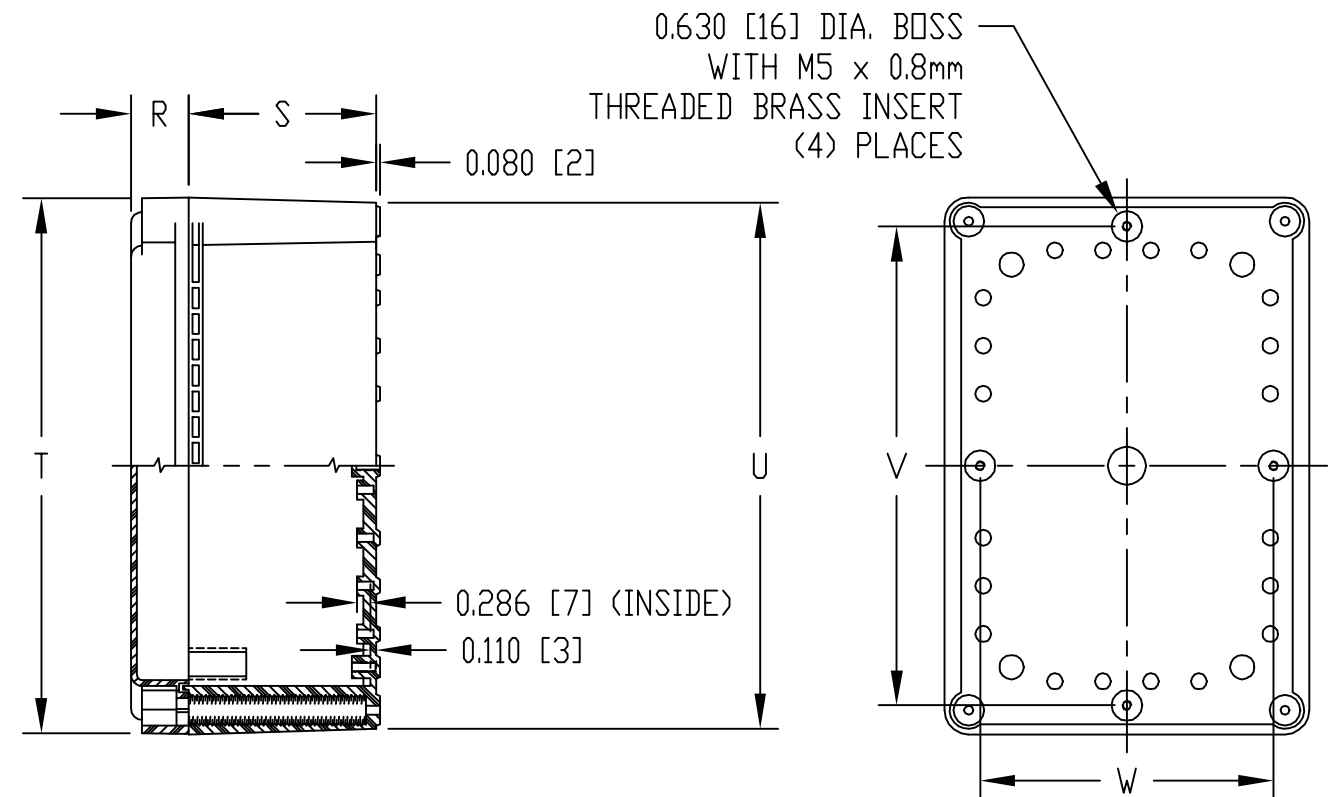
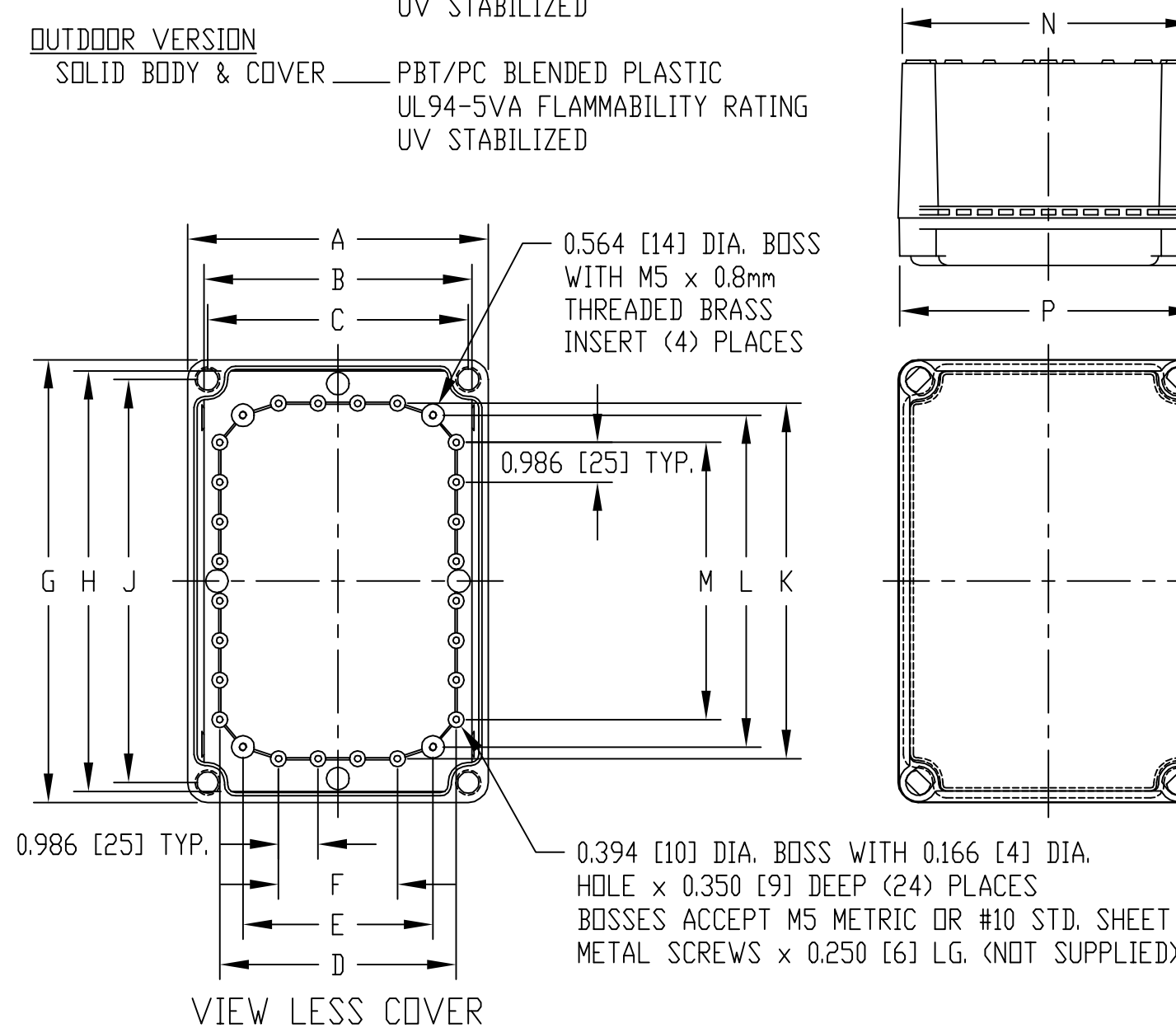
**INDUSTRY STANDARDS:**

INDOOR VERSION

UL508 TYPE 1, 2, 4, 4X INDOOR, 12 & 13  
NEMA TYPE 1, 2, 4, 4X, 12 & 13  
IEC529-IP65

OUTDOOR VERSION

UL508 TYPE 1, 2, 4, 4X, 12 & 13  
NEMA TYPE 1, 2, 4, 4X, 12 & 13  
IEC529-IP65



AIR AND MOISTURE VENTS, STAINLESS  
STEEL LOCKING HASP, PANEL MOUNTING  
RAILS, GALVANIZED STEEL INNER PANEL  
AND STAINLESS STEEL WALL MOUNTING  
BRACKETS ARE NOT INCLUDED, BUT CAN  
BE PURCHASED SEPARATELY.

DIMENSIONS = INCHES  
[MILLIMETERS]

**NOTE:** ALL DIMENSIONS HAVE ±0.039 [±1] TOLERANCE  
UNLESS OTHERWISE SPECIFIED

INDOOR VERSION		OUTDOOR VERSION	DIMENSIONS																			
PART NO.		PART NO.	A	B	C	D	E	F	G	H	J	K	L	M	N	P	R	S	T	U	V	W
SOLID COVER	CLEAR COVER	SOLID COVER	7.485	6.663	6.496	5.890	4.736	2.958	11.024	10.474	10.039	8.850	8.263	6.902	7.280	7.420	1.181	3.850	10.984	10.805	9.838	6.027
NBD-10442	NBD-10462	NBD-15442	[190]	[169]	[165]	[150]	[120]	[75]	[280]	[266]	[255]	[225]	[210]	[175]	[185]	[188]	[30]	[98]	[279]	[274]	[250]	[153]

# Mouser Electronics

Authorized Distributor

Click to View Pricing, Inventory, Delivery & Lifecycle Information:

## Bud Industries:

[NBD-15442](#) [NBD-10442](#) [NBD-10462](#) [10462 - QT. 1617-04](#) [NBDSCREW](#)