

Customer Information Sheet

DRAWING No.: M20-106XX00

SHEET 2 OF 2

IF IN DOUBT - ASK

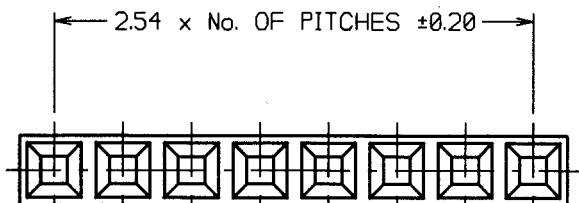
©

NOT TO SCALE

THIRD ANGLE PROJECTION

ALL DIMENSIONS IN mm

ORDER CODE:
M20-106XX00
 No. OF WAYS
 01 TO 12



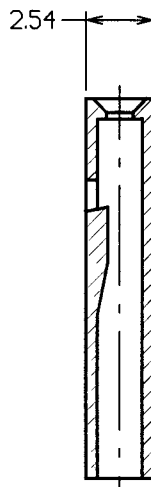
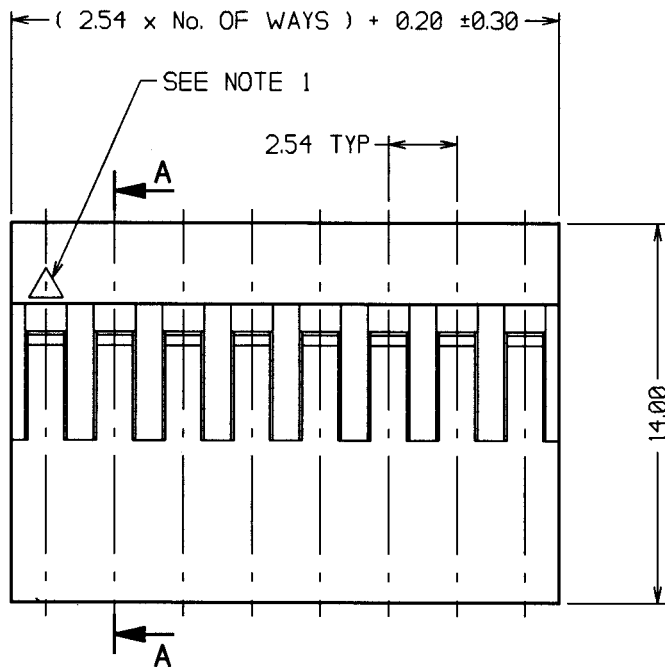
SPECIFICATIONS:

ELECTRICAL:

CURRENT RATING = 3A AC/DC
 VOLTAGE RATING = 250V AC MAX
 CONTACT RESISTANCE = 20 MILLIOHMS MAX
 INSULATION RESISTANCE = 5,000 MEGOHMS MIN
 DIELECTRIC STRENGTH = 1,500V AC FOR 1 MINUTE

ENVIRONMENTAL:

TEMPERATURE RANGE = -40°C TO +105°C



SECTION A-A

NOTES:

- CONTACT No. 1 MARKER SYMBOL.
- FOR USE WITH CRIMP CONTACTS:
 M20-11600XX (REELED CONTACTS),
 M20-11800XX (LOOSE CONTACTS).
- THE ABOVE SPECIFICATIONS APPLY WHEN THIS MOULDING IS USED WITH THE SPECIFIED CONTACTS.
- FOR COMPLETE ELECTRICAL AND MECHANICAL SPECIFICATIONS, SEE COMPONENT SPECIFICATION C001XX (LATEST ISSUE).

WJB	5	19.06.01	5994
NAME	ISS.	DATE	C/NOTE
APPROVED: <i>[Signature]</i>			
CHECKED: <i>[Signature]</i>			
DRAWN: K. LIOTTA			
CUSTOMER REF.:			
ASSEMBLY DRG.:			

HARWIN

HARWIN INC U.S.A. TEL: (812) 285 0055 FAX: (812) 285 0056	HARWIN PLC U.K. TEL: 023 9237 0451 FAX: 023 9231 4590	HARWIN PTE SINGAPORE TEL: 65 7794909 FAX: 65 7793868
--	--	---

THIS DRAWING AND ANY INFORMATION OR DESCRIPTIVE MATTER SET OUT HEREON ARE CONFIDENTIAL AND COPYRIGHT PROPERTY OF THE HARWIN GROUP AND MUST NOT BE DISCLOSED, LOANED, COPIED OR USED FOR MANUFACTURING, TENDERING OR FOR ANY OTHER PURPOSE WITHOUT THEIR WRITTEN PERMISSION.

TOLERANCES
 X. - ±1mm
 X.X - ±0.25mm
 X.XX - ±0.10mm
 X.XXX - ±0.01mm
 ANGLES - ±5°
 UNLESS STATED

MATERIAL:
 MODIFIED PPO
 UL94V-1 BLACK

FINISH: CLEAN

S/AREA: mm²

TITLE:
 2.54mm PITCH SIL
 CRIMP MOULDING

DRAWING NUMBER:
M20-106XX00

SHT 2 OF 2

Mouser Electronics

Authorized Distributor

Click to View Pricing, Inventory, Delivery & Lifecycle Information:

[Harwin:](#)

[M20-1060700](#) [M20-1061100](#) [M20-1060300](#) [M20-1060900](#) [M20-1060500](#) [M20-1060400](#) [M20-1061200](#) [M20-1060800](#) [M20-1060600](#) [M20-1061000](#) [M20-1060200](#) [M20-1060100](#)