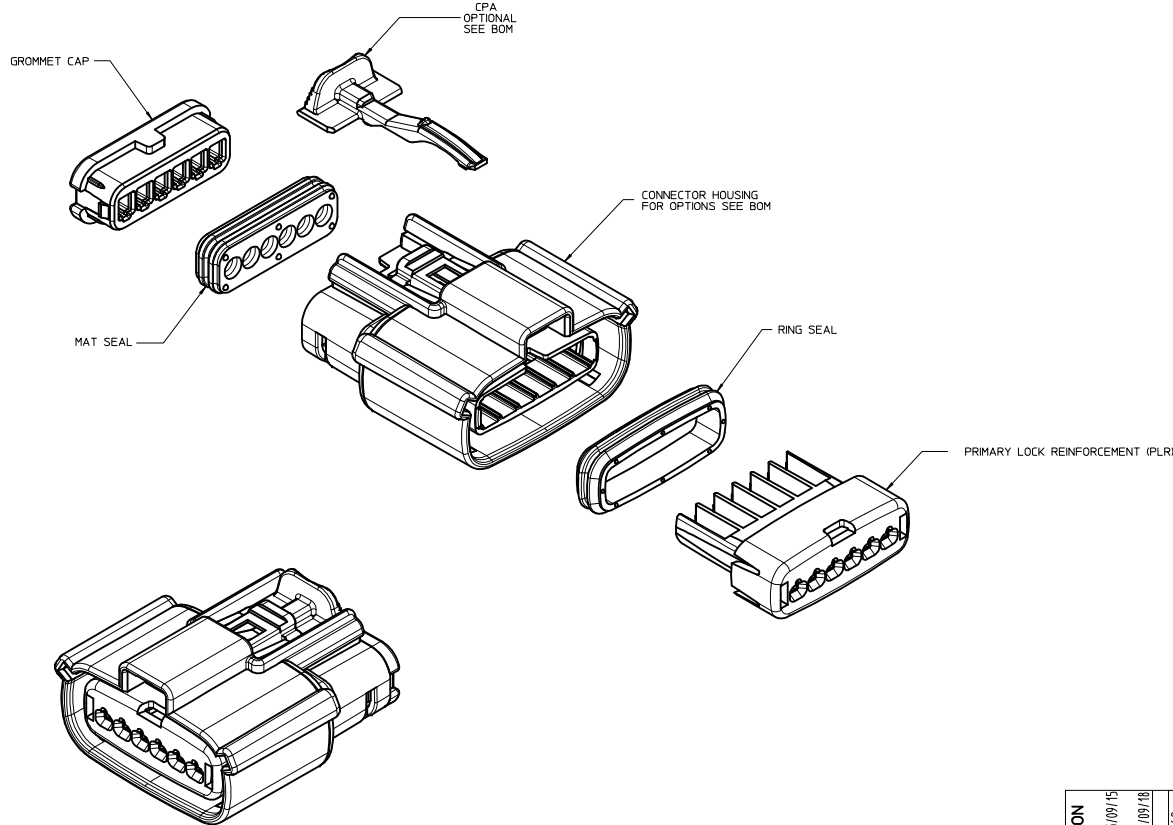


TABLE OF CONTENTS	
SHEET NO.	SHEET DESCRIPTION
1	NOTES
2	KEY CONFIGURATIONS
3	RECEPTACLE SEALED ASSEMBLY
4	BOM



NOTES: VALID UNLESS OTHERWISE SPECIFIED

1. GENERAL:
  - a. APPLICATION SPECIFICATION SEE: AS-33472-100  
 -CONTAINS: PRODUCT INTRODUCTION, PRODUCT SUMMARY, CONNECTOR ASSEMBLY, PACKAGING INFORMATION, CONNECTOR MATING, SERVICE INSTRUCTIONS, ELECTRICAL CONTINUITY CHECKING, CRIMPING, AND TROUBLESHOOTING.  
 -DESIGNED TO MATE WITH DEVICE CONNECTION AS SPECIFIED IN DRAWING EWCAP 150-S-006-1-Z03, AVAILABLE AT <http://ewcap.uscorteams.org/>  
 -DESIGNED TO MATE WITH BLADE SEALED ASSEMBLY AS SPECIFIED IN DRAWING SD-33481-061  
 -FOR 15mm RECEPTACLE TERMINALS TO BE USED WITH THIS ASSEMBLY, SEE MOLEX DRAWING SD-33012-002.  
 -SYSTEM TO BE USED WITH WIRE WITH DIAMETER RANGE OF 1.2 mm TO 2.69 mm.  
 -ASSEMBLY SHIPPED WITH PLR AND CPA IN PRE-LOCK POSITION (SEE SECTION 2-2 PRE-LOCK).  
 -IN THE EVENT THAT THE PLR IS FOUND IN THE SEATED (FINAL LOCK) POSITION, REFER TO MOLEX SPECIFICATION PS-34646-001, AVAILABLE AT www.molex.com <http://www.molex.com>.  
 -ASSEMBLY CONFORMS TO SAE/J59CAR-2 REV.4 WITH THE FOLLOWING EXCEPTIONS: ENGAGEMENT FORCE TO MOVE CPA FROM PRE-LOCK TO FINAL LOCK POSITION WHEN UNMATED: 40N MIN.  
 DISENGAGEMENT FORCE TO MOVE CPA FROM FINAL LOCK TO PRE-LOCK POSITION: 3N MIN. 40N MAX  
 TERMINAL INSERTION FORCE FOR WIRE DIAMETER ABOVE 2.5mm NOT EXCEEDING 2.69mm SHALL NOT EXCEED 40 NEWTONS.
  - b. PRODUCT SPECIFICATION SEE: PS-33471-000  
 CONTAINS: PRODUCT INTRODUCTION, PRODUCT SUMMARY, AND PRODUCT VALIDATION.
  - c. PACKAGING SPECIFICATION PER MOLEX DRAWING: PK-31300-903
  - d. PARTS MUST BE IN COMPLIANCE TO MOLEX CHEMICAL SUBSTANCES FOR PRODUCTS AND PACKAGING SPECIFICATION: ES-40000-5016
  - e. DATA MUST BE SUBMITTED UNDER THE MOLEX PART NUMBER TO IMDS (COMPANY ID=19255)
2. DESIGN - MATERIALS:
  - a. CONNECTOR HOUSING, GROMMET CAP, PLR: SPS/NYLON BLEND 20% GLASS FILLED
  - b. CPA: PBT 20% GLASS FILLED
  - c. MAT SEAL AND RING SEAL: INHERENTLY LUBRICATED SILICONE
3. DESIGN - GEOMETRY:
  - a. THIS IS A 100% CAD GENERATED PART. THE CAD MATHEMATICAL DATA IS THE MASTER FOR THIS PART. FOR DIMENSIONAL OR ANY INFORMATION NOT SHOWN ON THIS DRAWING, ANALYZE THE CAD MODEL.
  - b. GEOMETRIC DIMENSIONS AND TOLERANCES PER ASME Y14.5M - 1994.
  - c. EDGES AND UNDIMENSIONED DETAILS PER ISO13715
  - d. CORNERS SHOWN AS SHARP TO BE R 0.2 MAX.
  - e. LETTERING SHALL BE 0.15 MAX RAISED IN 0.25 MAX RECESS PAD. THIS INCLUDES RECYCLING CODE, CAVITY ID, VENDOR IDENTIFICATION, AND CUSTOMER MATERIAL NUMBER.
  - f. VISUAL DEFECTS SHALL MEET COSMETIC STANDARD PS-45499-002 (Class B)
  - g. LASER MARKING: TBD

INSPECTION NUMBER LOG  
 LAST NUMBER USED: 5  
 ADDED:  
 REMOVED:

S8	ADDED NEW P/N 33471-0675
S7	ADDED NEW P/N 33471-0674
S6	UPDATED VIEWS
S5	UPDATED VIEWS
S4	ADDED NEW P/N 33471-0673
S3	CHANGE PART NUMBER STATUS
	ADDED NEW P/N 33471-0659 33471-0660
	33471-0661 33471-0662
	33471-0663 33471-0664
	33471-0665 33471-0666
	33471-0667 33471-0668
33471-0669 33471-0670	
33471-0671 33471-0672	
S2	ADDED NEW P/N 33471-0658
S1	UPDATED CONFIGURATIONS SHEET 3
S	REDRAWN
REV	DESCRIPTION

ENTER DESCRIPTION DEC NO: UAU2016-0375 DRAWN/APP/FFIT 2015/09/15 CHKD: APPR:VKOSHY 2015/09/18 REV DESCRIPTION	QUALITY SYMBOLS	GENERAL TOLERANCES (UNLESS SPECIFIED)	DIMENSION STYLE	SCALE	DESIGN UNITS	THIRD ANGLE PROJECTION
	▽=0	4 PLACES ± --- ± ---	MM ONLY	3:1	METRIC	☉
	▽=0	3 PLACES ± --- ± ---				
	▽=0	2 PLACES ± 0.10 ± ---				
		ANGULAR ± 3 °				
		DRAFT WHERE APPLICABLE MUST REMAIN WITHIN DIMENSIONS				
			MATERIAL NO.	DOCUMENT NO.		
			SEE BOM	SD-33471-061		
			SIZE			
			D			

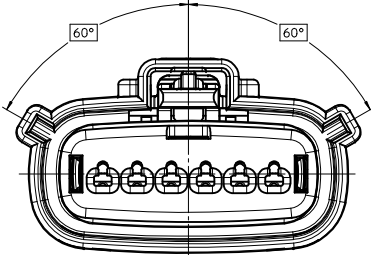
TITLE  
**MX150 1X6 RECEPTACLE SEALED ASSEMBLY MAT SEAL**

**molex**

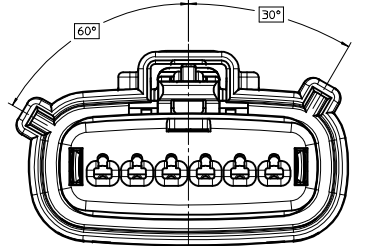
SHEET NO.  
 1 OF 4

THIS DRAWING CONTAINS INFORMATION THAT IS PROPRIETARY TO MOLEX INCORPORATED AND SHOULD NOT BE USED WITHOUT WRITTEN PERMISSION

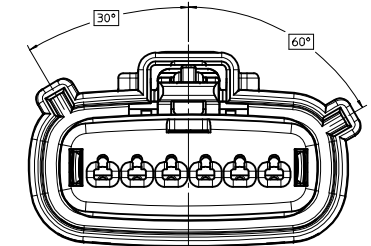
KEY CONFIGURATIONS



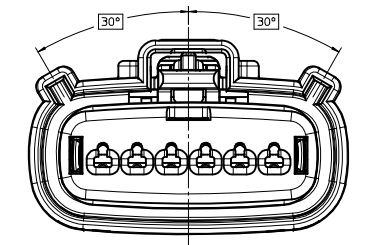
KEY A



KEY B



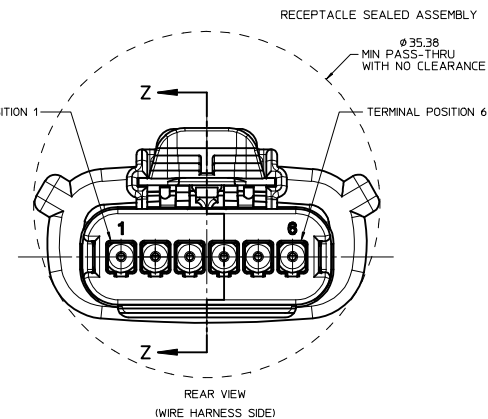
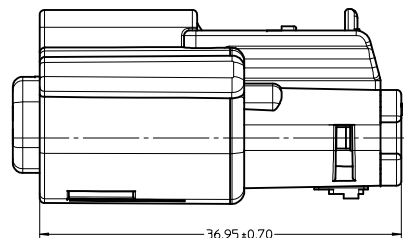
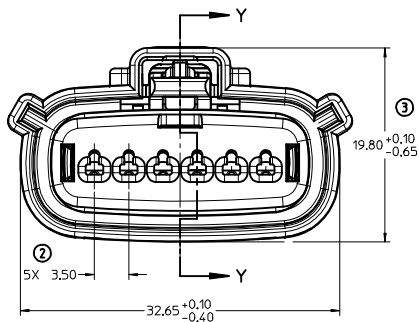
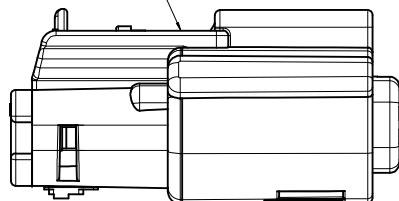
KEY C



KEY D

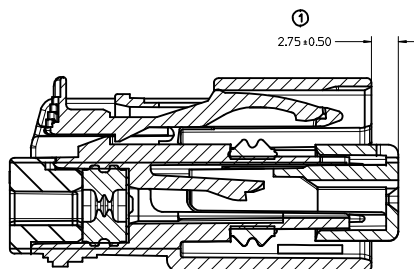
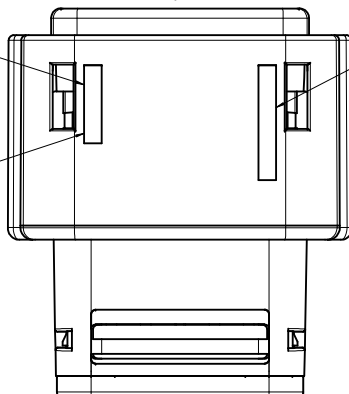
<b>ENTER DESCRIPTION</b> IEC NO. UAU2016-0375 DRAWN/PROFIT 2015/09/15 CHKD: 58 APPR: WKSHY 2015/09/18	QUALITY SYMBOLS ▽=0 ▽=0 ▽=0	GENERAL TOLERANCES (UNLESS SPECIFIED) mm INCH 4 PLACES ± --- ± --- 3 PLACES ± --- ± --- 2 PLACES ± 0.10 ± --- 1 PLACE ± 0.3 ± --- 0 PLACE ± ±	DIMENSION STYLE MM ONLY	SCALE 4:1	DESIGN UNITS METRIC	THIRD ANGLE PROJECTION	
	DRAFT WHERE APPLICABLE MUST REMAIN WITHIN DIMENSIONS	MATERIAL NO. SEE BOM	DRAWN BY DGRIFITHS	DATE 06-03-03	CHECKED BY DGRIFITHS	DATE 06-03-03	TITLE MX150 1X6 RECEPTACLE SEALED ASSEMBLY MAT SEAL
	ANGULAR ± 3 °	APPROVED BY DGRIFITHS	DATE 06-03-03	DOCUMENT NO. SD-33471-061	SHEET NO. 2 OF 4	molex	THIS DRAWING CONTAINS INFORMATION THAT IS PROPRIETARY TO MOLEX INCORPORATED AND SHOULD NOT BE USED WITHOUT WRITTEN PERMISSION
	SIZE D						

LASER MARKING THIS SURFACE  
SEE NOTE 3g.



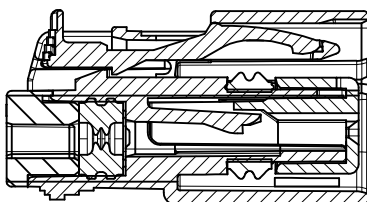
MOLD CAVITY CODE RECYCLE CODE

LOCATION CODE



PRIMARY LOCK REINFORCEMENT (PLR) SHOWN  
IN PRE-STAGED POSITION

SECTION Z-Z



PRIMARY LOCK REINFORCEMENT (PLR) SHOWN  
IN FINAL-LOCK POSITION

SECTION Y-Y

<b>ENTER DESCRIPTION</b> IEC NO. UAU2016-0375 DRAWN/PROFIT 2015/09/15 CHKD: APPR:VKOSHY 2015/09/18 REV:	QUALITY SYMBOLS	GENERAL TOLERANCES (UNLESS SPECIFIED)	DIMENSION STYLE	SCALE	DESIGN UNITS	THIRD ANGLE PROJECTION
	∇=0 ∇=0 ∇=0	mm INCH 4 PLACES ± --- ± --- 3 PLACES ± --- ± --- 2 PLACES ± 0.10 ± --- 1 PLACE ± 0.3 ± --- 0 PLACE ± ±	MM ONLY	4:1	METRIC	DRAWN BY DATE DGRIFITHS 06-03-03 CHECKED BY DATE DGRIFITHS 06-03-03 APPROVED BY DATE DGRIFITHS 06-03-03
	ANGULAR ± 3 ° DRAFT WHERE APPLICABLE MUST REMAIN WITHIN DIMENSIONS	MATERIAL NO. SEE BOM	DOCUMENT NO. SD-33471-061	SHEET NO. 3 OF 4		
	THIS DRAWING CONTAINS INFORMATION THAT IS PROPRIETARY TO MOLEX INCORPORATED AND SHOULD NOT BE USED WITHOUT WRITTEN PERMISSION					

ASSEMBLY PART NUMBER	COLOR	KEYING OPTION	CAVITY TYPE & STATUS (X = PLUGGED)						CPA	STATUS	COMMENTS
			1	2	3	4	5	6			
33471-0601	BLACK	A							-	SALEABLE	
33471-0602	LT. GRAY	B							-		
33471-0603	BROWN	C							-	NOT RECOMMENDED	SEE P/N 33471-0659
33471-0604	GREEN	D							-	NOT RECOMMENDED	SEE P/N 33471-0660
33471-0605	YELLOW	A							-	SALEABLE	
33471-0606	BLACK	A							YES	SALEABLE	
33471-0607	LT. GRAY	B							YES		
33471-0608	BROWN	C							YES	NOT RECOMMENDED	SEE P/N 33471-0661
33471-0609	GREEN	D							YES	NOT RECOMMENDED	SEE P/N 33471-0662
33471-0610	YELLOW	A							YES	SALEABLE	
33471-0611	BLACK	A						X	-	SALEABLE	
33471-0612	LT. GRAY	B						X	-		
33471-0613	BROWN	C						X	-	NOT RECOMMENDED	SEE P/N 33471-0663
33471-0614	GREEN	D						X	-	NOT RECOMMENDED	SEE P/N 33471-0664
33471-0615	YELLOW	A						X	-	SALEABLE	
33471-0616	BLACK	A						X	YES	SALEABLE	
33471-0617	LT. GRAY	B						X	YES		
33471-0618	BROWN	C						X	YES	NOT RECOMMENDED	SEE P/N 33471-0665
33471-0619	GREEN	D						X	YES	NOT RECOMMENDED	SEE P/N 33471-0666
33471-0620	YELLOW	A						X	YES	SALEABLE	
33471-0621	BLACK	A	X					X	-	SALEABLE	
33471-0622	LT. GRAY	B	X					X	-		
33471-0623	BROWN	C	X					X	-	NOT RECOMMENDED	SEE P/N 33471-0667
33471-0624	GREEN	D	X					X	-	NOT RECOMMENDED	SEE P/N 33471-0668
33471-0625	YELLOW	A	X					X	-	SALEABLE	
33471-0626	BLACK	A	X					X	YES	SALEABLE	
33471-0627	LT. GRAY	B	X					X	YES		
33471-0628	BROWN	C	X					X	YES	NOT RECOMMENDED	SEE P/N 33471-0669
33471-0629	GREEN	D	X					X	YES	NOT RECOMMENDED	SEE P/N 33471-0670
33471-0630	YELLOW	A	X					X	YES	SALEABLE	
33471-0631	BLACK	A	X	X	X	X	X	X	-	SALEABLE	
33471-0632	LT. GRAY	B	X	X	X	X	X	X	-		
33471-0633	BROWN	C	X	X	X	X	X	X	-	NOT RECOMMENDED	SEE P/N 33471-0671
33471-0634	GREEN	D	X	X	X	X	X	X	-	NOT RECOMMENDED	SEE P/N 33471-0672
33471-0635	YELLOW	A	X	X	X	X	X	X	-	SALEABLE	
33471-0650	BLACK	A						X	X	-	SALEABLE
33471-0651	BLACK	A	X	X	X	X	X	X	YES	SALEABLE	
33471-0652	BLACK	A						X	YES	SALEABLE	
33471-0653	BLACK	A			X				YES	SALEABLE	
33471-0654	BLACK	A			X				-	SALEABLE	
33471-0655	BLACK	A			X	X	X		-	SALEABLE	
33471-0656	BLACK	A						X	-	SALEABLE	
33471-0657	BLACK	A						X	-	SALEABLE	
33471-0658	BLACK	A	X	X	X	X			-	SALEABLE	
33471-0659	DK.GRAY	C							-	SALEABLE	
33471-0660	ST.GRAY	D							-	SALEABLE	
33471-0661	DK.GRAY	C							YES	SALEABLE	
33471-0662	ST.GRAY	D							YES	SALEABLE	
33471-0663	DK.GRAY	C						X	-	SALEABLE	
33471-0664	ST.GRAY	D						X	-	SALEABLE	
33471-0665	DK.GRAY	C						X	YES	SALEABLE	
33471-0666	ST.GRAY	D						X	YES	SALEABLE	
33471-0667	DK.GRAY	C	X					X	-	SALEABLE	
33471-0668	ST.GRAY	D	X					X	-	SALEABLE	
33471-0669	DK.GRAY	C	X					X	YES	SALEABLE	
33471-0670	ST.GRAY	D	X					X	YES	SALEABLE	
33471-0671	DK.GRAY	C	X	X	X	X	X	X	-	SALEABLE	
33471-0672	ST.GRAY	D	X	X	X	X	X	X	-	SALEABLE	
33471-0673	BLACK	A			X				-	SALEABLE	
33471-0674	BLACK	A	X		X				-	SALEABLE	
33471-0675	BLACK	A	X		X				YES	SALEABLE	

<b>ENTER DESCRIPTION</b> IEC NO. UAU2016-0375 DRAWN/PROFIT 2015/09/15 CHKD: APPR:VKOSHY 2015/09/18 REV:	QUALITY SYMBOLS	GENERAL TOLERANCES (UNLESS SPECIFIED)	DIMENSION STYLE	SCALE	DESIGN UNITS	THIRD ANGLE PROJECTION
	▽=0	mm INCH	MM ONLY		METRIC	
	▽=0	4 PLACES ± 0.10	DRAWN BY DATE			TITLE
	▽=0	3 PLACES ± 0.03	CHECKED BY DATE			MX150 1X6 RECEPTACLE SEALED ASSEMBLY MAT SEAL
		2 PLACES ± 0.10	APPROVED BY DATE			
		1 PLACE ± 0.3	DRAWN BY DATE			
		0 PLACE ±				
		ANGULAR ± 3°	MATERIAL NO.		DOCUMENT NO.	SHEET NO.
		DRAFT WHERE APPLICABLE MUST REMAIN WITHIN DIMENSIONS	SEE BOM		SD-33471-061	4 OF 4
			THIS DRAWING CONTAINS INFORMATION THAT IS PROPRIETARY TO MOLEX INCORPORATED AND SHOULD NOT BE USED WITHOUT WRITTEN PERMISSION			