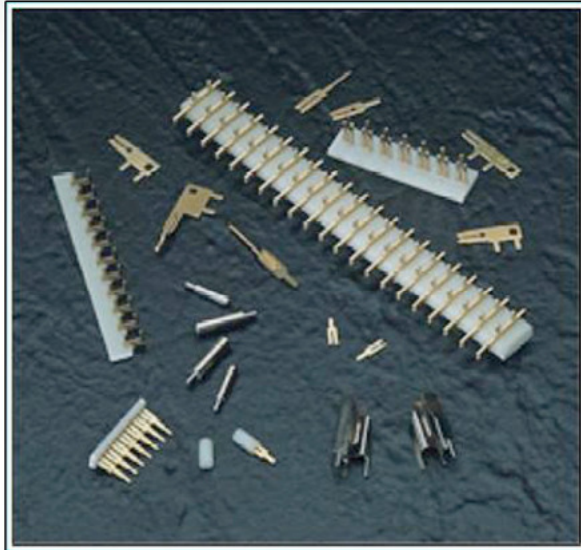
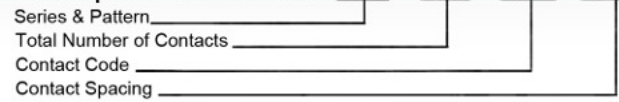




SERIES 100



Example Part Number 103 - 060 - 252 - 100



Series and Pattern	Pattern Description	
103	- - - - -	
105		
106	/ / / / /	
Total Number of Contacts	Contact Spacing	
002, 003, ... 060	.200 (5.08)	
002, 003, ... 120	.100 (2.54)	
Contact Rows	Pattern	Contact Spacing
201, 202	105	.200 (5.08)
208	105	.100 (2.54) or .200 (5.08)
250, 251, 450	103 or 106	.200 (5.08)
252 or 253	103 or 106	.100 (2.54) or .200 (5.08)
Spacing Code	Contact Spacing	
100	.100 (2.54)	
200	.200 (5.08)	

100 SERIES LOOSE CONTACTS

Example Part Number 100 - 290 - 208



Contact Code ^{1,2,3,4}	Silhouette	Tail Length "G"
201		.122 (3.10)
202		.122 (3.10)
208		.108 (2.74)
210		.122 (3.10)
250		.122 (3.10)
251		.375 (9.53)
252		.188 (4.78)
253		.110 (2.79)
258		.497 (12.62)
450		.182 (4.62)

Ordering Code Notes

- Contact codes 208, 252 and 253 are rated for 5 Amperes current
All other contacts are rated for 10 Amperes
- Contact codes 208, 252 and 253 will mate together, but not with the other contacts listed
- Contact codes 210 and 258 are available loose only
- Contact code 450 is designed for .125 (3.18) thick circuit boards.
All other contacts are designed for .062 (1.57) thick boards
- Pattern schematics are views toward the tip of the contact tails
- Consult with EDAC regarding double row staggered patterns for contact codes 250, 251, or 450. Available with up to 60 contacts per row, these patterns have .125 (3.18) row spacing for use on mother boards that mate with upper and lower tier daughter board contacts

FEATURES

.100 (2.54) or .200 (5.08) contact spacing for contacts on strips
Other spacings accommodated with Loose Contacts

Assemble onto .062 (1.57) or .125 (3.18) nominal thickness PC Board by staking and/or soldering of contact tails

Edacon Hermaphroditic contact mating design

Card Guides, Guide Pins, Guide Sockets and Polarizing Sleeves to ensure correct alignment and mating are available

Handling and assembly are simplified with Contacts on Strips

Designed to mate with 100 Series Contacts in parallel or perpendicular board configurations

SPECIFICATIONS

Contact Material: Phosphor Bronze Alloy CA-510

Contact Plating: Gold over Nickel for entire contact

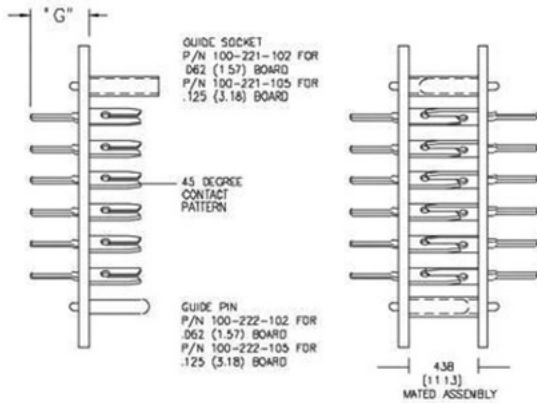
Current Rating: 5 or 10 Amperes (see ordering notes)

Contact Resistance: 10 Milliohms Maximum

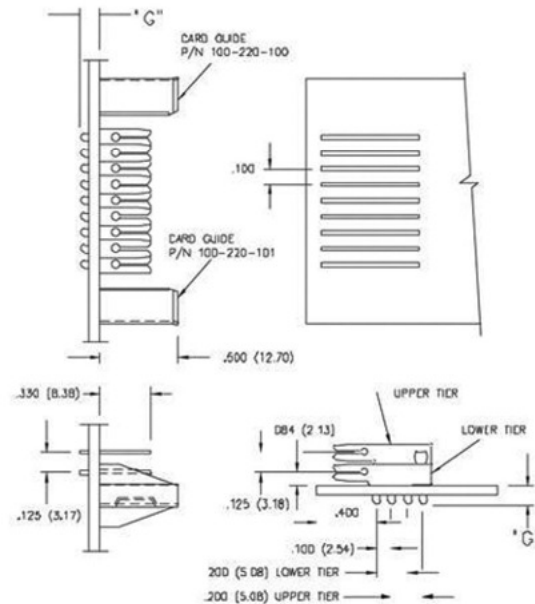
Insertion and Withdrawl Force: 2 to 16 oz (.056 to 4.45N) per Contact

PARALLEL P.C. BOARDS .200 (5.08) CONTACT SPACING

CONTACT CODES 250, 251, 258, OR 450
 .062 (1.57) OR .125 (3.18) NOMINAL THICKNESS BOARDS

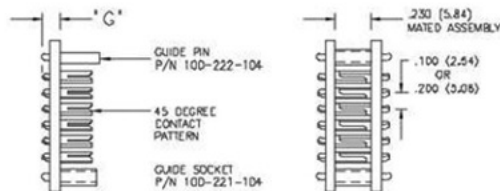


MOTHER BOARD - CONTACT CODES 250, 251, 258 OR 450
 -.062 (1.57) OR .125 (3.18) NOMINAL THICKNESS BOARDS



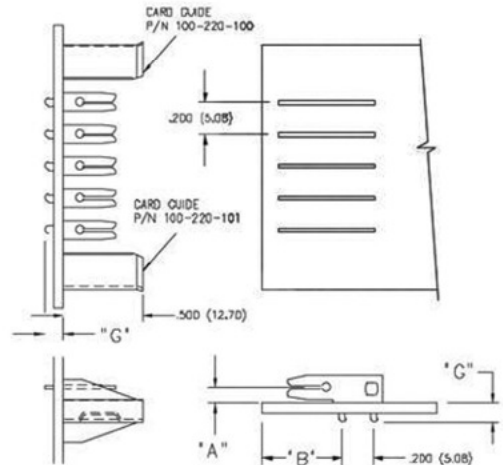
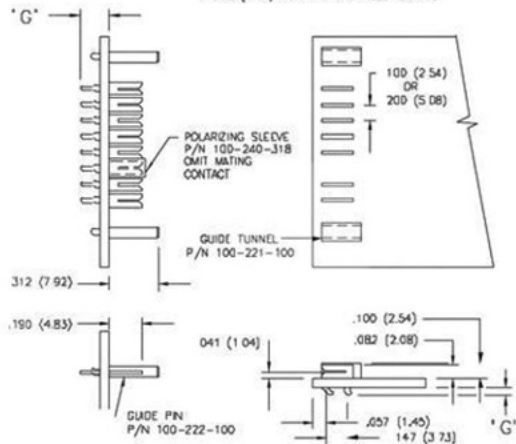
PARALLEL P.C. BOARDS .100 (2.54) OR .200 (5.08) CONTACT SPACING

CONTACT CODES 252 OR 253
 .062 (1.57) OR .125 (3.18) NOMINAL THICKNESS BOARDS



MOTHER/DAUGHTER BOARDS .100 (2.54) OR .200 (5.08) CONTACT SPACING

MOTHER BOARD - CONTACT CODES 252 OR 253
 DAUGHTER BOARD - CONTACT CODE 208
 -.062 (1.57) NOMINAL THICKNESS BOARDS



CONTACT CODE	"A"	"B"
201	.209 (5.31)	.500 (12.70)
202, 203	.084 (2.13)	.400 (10.16)
204	.096 (2.44)	.450 (11.43)
210	.099 (2.51)	.200 (5.08)

Mouser Electronics

Authorized Distributor

Click to View Pricing, Inventory, Delivery & Lifecycle Information:

EDAC:

[100-220-100-102](#) [100-220-101-102](#) [100-290-201](#) [100-290-202](#) [100-290-203](#) [100-290-208](#) [100-290-210](#) [100-290-250](#) [100-290-251](#) [100-290-252](#) [100-290-253](#) [100-290-450](#) [103-003-251-200](#) [103-003-252-200](#) [103-004-251-200](#) [103-007-253-100](#) [103-020-253-100](#) [103-027-450-200](#) [103-028-252-100](#) [105-003-203-200](#) [105-008-201-200](#) [105-009-202-200](#) [105-015-202-200](#) [105-021-202-200](#) [105-023-201-200](#) [105-024-203-200](#) [105-027-203-200](#) [105-060-201-200](#) [105-060-202-200](#) [106-060-252-100](#)