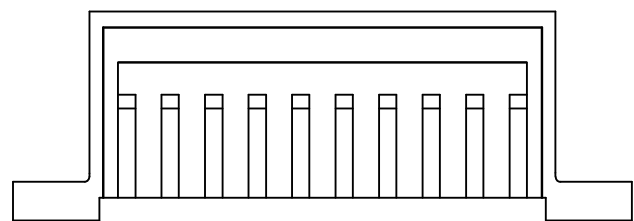
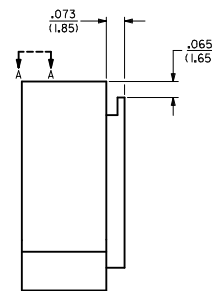
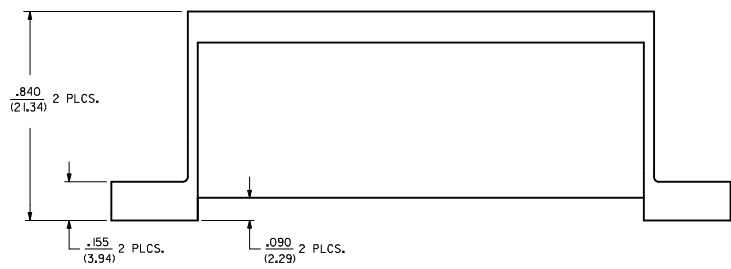
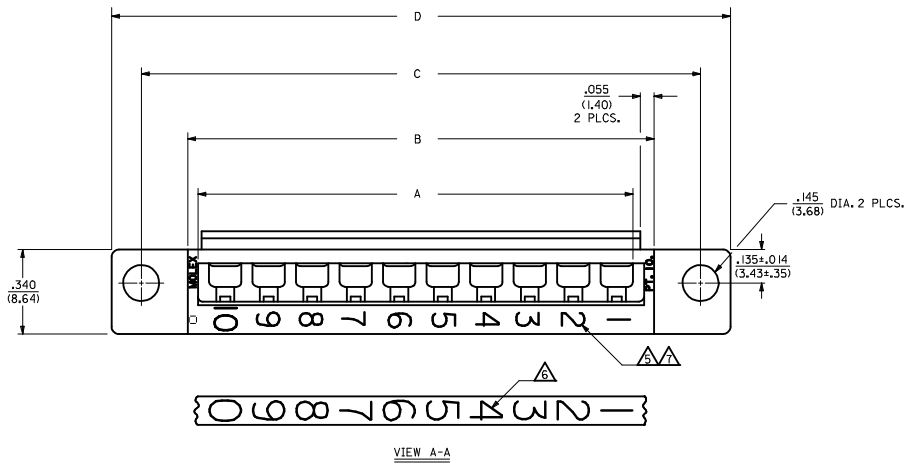
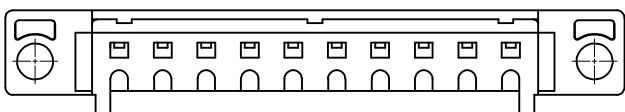


- NOTES:**
- ▲ THESE HOUSINGS ARE FOR USE WITH THE 1457-•• TERMINALS AND MAY BE SUBDIVIDED BY USING THE 1461-K KEY.
 - ▲ THE HOUSINGS ARE ONLY AVAILABLE IN 5, 10, 15, AND 20 CIRCUIT SIZES.
 - ▲ PRODUCT SPECIFICATION PS 50-36 APPLIES.
 - ▲ THESE HOUSINGS CONFORM TO U.L. AND C.S.A. REQUIREMENTS.
 - ▲ .060/(1.52) HIGH RAISED NUMERALS.
 - ▲ .125/(3.18) HIGH RECESSED NUMERALS ON A MATTE BACKGROUND.
 - ▲ .09/(2.3) HIGH INK STAMPED NUMERALS.



MATERIAL:
 POLYESTER, UNFILLED, 94V-0.
 COLOR: BLACK.
 (REF.: SMES 128C-D)



MODIFY COUR OUTS IEC NO: UCF2005-2756 DRAWN BY: DRWINIS BARRA 2005/09/29 CHECKED BY: CHYKOBARKER 2005/10/10 APPR: SMILLER 2005/10/12 REV DESCRIPTION	QUALITY SYMBOLS ▽=0 ▽=0		GENERAL TOLERANCES (UNLESS SPECIFIED)		DIMENSION STYLE IN/MM		SCALE 4:1		DESIGN UNITS INCH		THIRD ANGLE PROJECTION	
	4 PLACES ± --- ± ---		mm INCH		DRAWN BY DATE AFG 95/12/18		CHECKED BY DATE DATE 95/12/18		TITLE HOUSING, COMMONING [.090/(2.29) OFFSET]			
	3 PLACES ± --- ± .010		2 PLACES ± 0.25 ± .014		1 PLACE ± 0.35 ± ---		APPROVED BY DATE GWF 95/12/18		MATERIAL NO. DOCUMENT NO. SEE TABLE SD-1461-*			
	ANGULAR ±1/2°		DRAFT WHERE APPLICABLE MUST REMAIN WITHIN DIMENSIONS		MATERIAL NO. DOCUMENT NO. SEE TABLE SD-1461-*		SIZE D		THIS DRAWING CONTAINS INFORMATION THAT IS PROPRIETARY TO MOLEX INCORPORATED AND SHOULD NOT BE USED WITHOUT WRITTEN PERMISSION			

PART NO.	ENG. NO.	NO. CKTS.	DIM. A	DIM. B	DIM. C	DIM. D
07-01-8203	1461-20W	20	3.50 (88.9)	3.63 (92.2)	4.00 (101.6)	4.24 (107.7)
07-01-8153	1461-15W	15	2.62 (66.5)	2.75 (69.9)	3.13 (79.5)	3.37 (85.6)
07-01-8103	1461-10W	10	1.75 (44.45)	1.875 (47.63)	2.250 (57.15)	2.49 (63.2)
07-01-8053	1461-5W	5	.875 (22.23)	1.000 (25.40)	1.375 (34.93)	1.515 (41.02)



1461 INK STAMPED HOUSINGS								
BEFORE INK STAMP		AFTER INK STAMP		NO. CKTS.	DIM. A	DIM. B	DIM. C	DIM. D
PART NO.	ENG. NO.	PART NO.	ENG. NO.					
007-01-8202	1461-200	007-01-8201	1461-20E	20	3.50 (88.9)	3.63 (92.2)	4.00 (101.6)	4.24 (107.7)
007-01-8152	1461-150	007-01-8151	1461-15E	15	2.62 (66.5)	2.75 (69.9)	3.13 (79.5)	3.37 (85.6)
007-01-8102	1461-100	007-01-8101	1461-10E	10	1.75 (44.45)	1.875 (47.63)	2.250 (57.15)	2.49 (63.2)
007-01-8052	1461-50	007-01-8051	1461-5E	5	.875 (22.23)	1.000 (25.40)	1.375 (34.93)	1.515 (41.02)

1461 SPECIAL INK STAMPED HOUSINGS CHART							
BEFORE INK STAMP		AFTER INK STAMP		NO. CKTS.	CIRCUIT NUMERALS		
PART NO.	ENG. NO.	PART NO.	ENG. NO.				
007-01-8102	1461-100	007-01-8104	1461-10-17	10	11	THRU	20
		007-01-8105	1461-10-27	10	21	THRU	30
		007-01-8106	1461-10-37	10	31	THRU	40
007-01-8102	1461-150	007-01-8104	1461-15-17	15	16	THRU	30
		007-01-8105	1461-15-27	15	31	THRU	45
		007-01-8106	1461-15-37	15	46	THRU	60
007-01-8202	1461-200	007-01-8204	1461-20-17	20	21	THRU	40
		007-01-8205	1461-20-27	20	41	THRU	60
		007-01-8206	1461-20-37	20	61	THRU	80

APPROVED DRAWING (SEE REV. 1) DATE: 12/18/95
 WORK ORDER # 1461-200
 HOUSE INC. COMMONING (L.090/(2.29) OFFSET)
 HOUSE INCORPORATED
 DATE: 12/18/95
 SHEET NO. 4
 OF 4
 HOUSE CHART 50-1461-1
 DATE: 12/18/95
 BY: [Signature]
 CHECKED BY: [Signature]
 LTH. REVISING LTH. REVISING
 D1 SEE SHEET 1
 D2 SEE SHEET 2