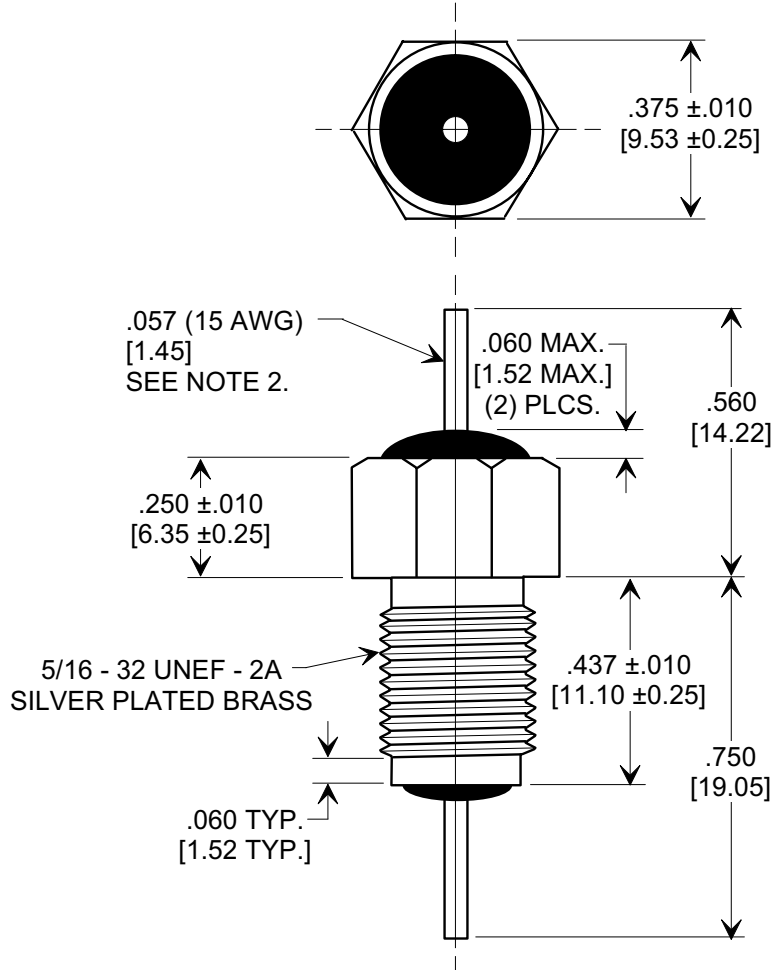
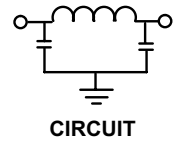
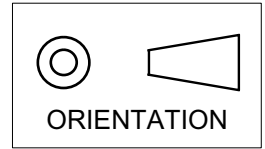


**MARKETING SALES DRAWING**  
**DIMENSIONS IN INCHES - DO NOT SCALE THIS DRAWING**  
**DIMENSIONS IN METRIC - [ ]**

Electrical Testing  
per Tusonix standard  
test plans and Mil-Std-202  
Test Methods.



**NOTES:**

- TUSONIX STANDARD PART NUMBER: 4206-007.  
TUSONIX RoHS COMPLIANT PART NUMBER: 4206-007 LF.  
CUSTOMER MUST SPECIFY STANDARD OR RoHS PART NUMBER WHEN ORDERING.
- LEAD FINISH: STANDARD PART #: 60/40 SOLDER PLATED COPPER. RoHS PART #: SILVER PLATED COPPER.
- PART MARKING: TRADEMARK AND VARIATION NUMBER ON HEX FLATS.  
STANDARD PART: BLACK INK. RoHS PART: GREEN INK.
- SUPPLIED WITH SILVER PLATED COPPER ALLOY HEX NUT AND INTERNAL TOOTH LOCK WASHER.

CAP. pF	WORKING VOLTAGE Vdc		CURRENT dc	MINIMUM NO LOAD INSERTION LOSS (dB) AT 25°C PER MIL-STD-220			
	+ 85° C	+ 125° C		10 MHz	100 MHz	1 GHz	10 GHz
4500 / 9000	700	500	25 A	15	65	70	70

X-2015 Rev-0	<b>REVISION RECORD</b>	0	Original Release C.O. <b>3139</b>	1	ADDED NOTES & METRIC. S.M. 01-27-99	2	19990126-1-01 REVISED NOTES. S.M. 10-24-05	3	20051006-1-04	--TOLERANCES-- Unless Otherwise Specified	Title <b>EMI FILTER</b>	
		DECIMAL ± .031 [0.79]	Drawn S.M. 12-03-98							Scale 2.5 X		
		ANGLES ±	Approved J.Mc. 12-03-98									
		<b>TUSONIX</b> TUCSON, ARIZONA	<b>A</b>							<b>4206-007</b>		