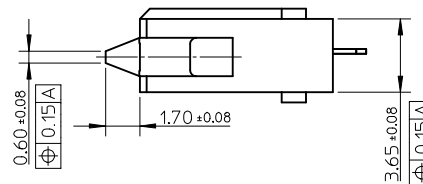
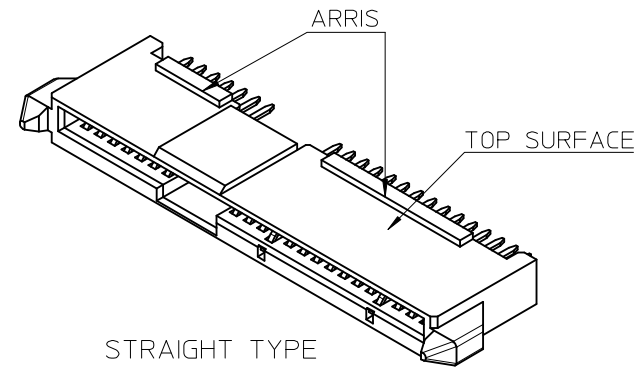


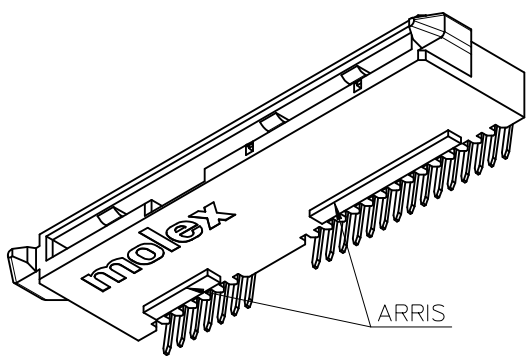
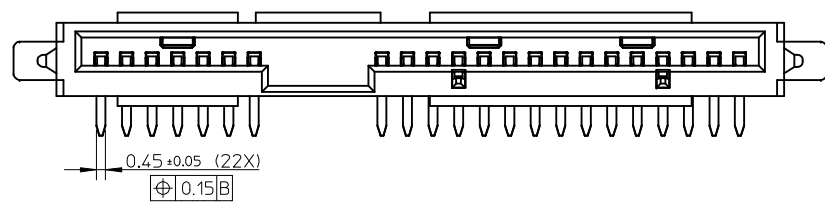
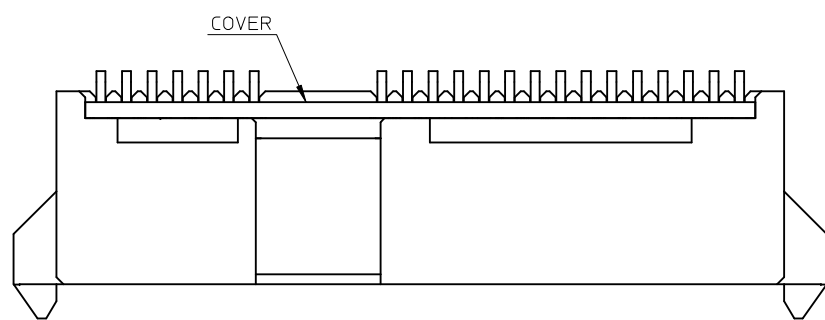
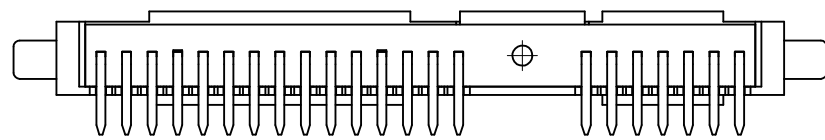
NOTES:

1. MATERIAL:
HOUSING: THERMAL PLASTIC, GLASS FILLED, UL94V-0, COLOR: BLACK.
TERMINAL: COPPER ALLOY, THICKNESS=0.25MM.
2. TERMINAL PLATING:
CONTACT AREA: GOLD PLATED, SEE TABLE.
SOLDER AREA: PURE TIN, THICKNESS=1.27 MICRONS MINIMUM.
UNDER PLATE: NICKLE, THICKNESS=1.27 MICRONS MINIMUM.
3. PRODUCT SPECIFICATION: REFER TO PS-47362-001.
4. PACKAGING METHOD: REFER TO PK-47362-001.
5. PRODUCT COMPLIANT TO RoHS DIRECTIVE 2002/95/EC AND ELV DIRECTIVE 2000/53/EC

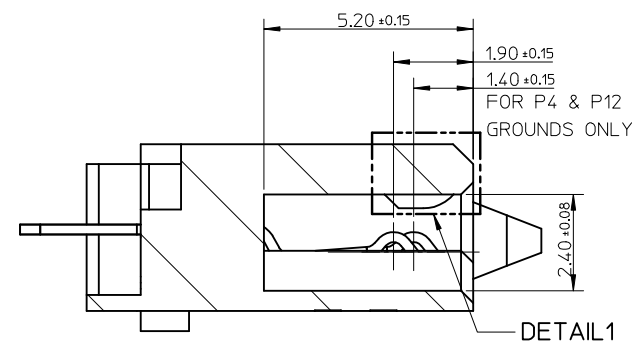


ADD NEW PART EC NO: SH2015-0114 DRWNG: GLL1 CHKD: APPR: AYIN 2014/09/10 2014/09/15	QUALITY SYMBOLS F=0 F=0 F=0	GENERAL TOLERANCES (UNLESS SPECIFIED)		DIMENSION STYLE	SCALE	DESIGN UNITS	THIRD ANGLE PROJECTION	
				MM ONLY	4:1	METRIC		
				DRAWN BY	DATE	TITLE		
				GLL1	2014/09/10	COMBO OF SATA & SAS RECEPTACLE CABLE END		
				CHECKED BY	DATE	molex		
				APPROVED BY	DATE			
				MATERIAL NO.		DOCUMENT NO.	SHEET NO.	
				SEE CHART IN SHEET 5		SD-47363-100	1 OF 5	
				DRAFT WHERE APPLICABLE MUST REMAIN WITHIN DIMENSIONS				
				THIS DRAWING CONTAINS INFORMATION THAT IS PROPRIETARY TO MOLEX INCORPORATED AND SHOULD NOT BE USED WITHOUT WRITTEN PERMISSION				

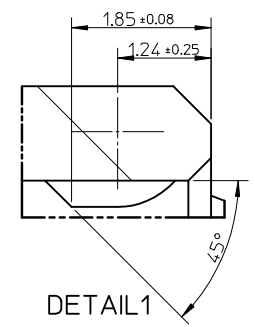
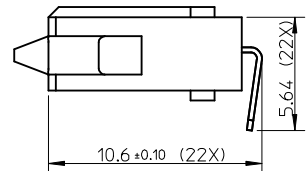
10 9 8 7 6 5 4 3 2 1



RIGHT ANGLE 90 DEGREE TYPE
OTHER DIMENSIONS REFER TO STRAIGHT TYPE



SECTION Z-Z

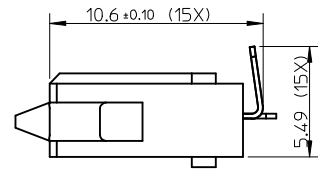
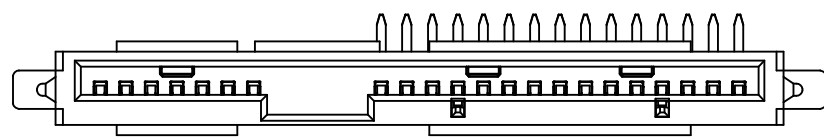
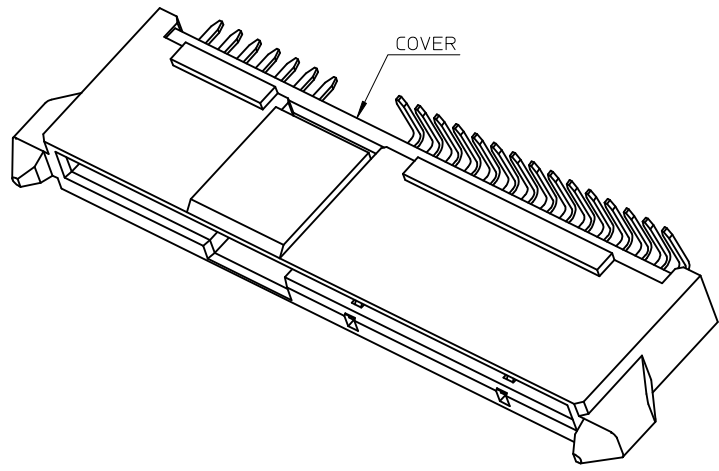
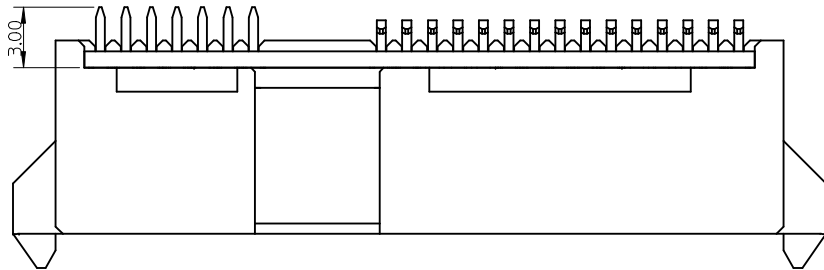


DETAIL1

SEE SHEET 1 EC NO: SH2015-0114 DRWG: GLL CHKD: APPR: AYIN REV	2014/09/10 2014/09/15	QUALITY SYMBOLS $F_{\square} = 0$ $F_{\square} = 0$ $F_{\square} = 0$	GENERAL TOLERANCES (UNLESS SPECIFIED)		DIMENSION STYLE MM ONLY		SCALE 4:1	DESIGN UNITS METRIC	THIRD ANGLE PROJECTION	
				mm	INCH	DRAWN BY GLL	DATE 2014/09/10	TITLE COMBO OF SATA & SAS RECEPTACLE CABLE END molex		
				4 PLACES ± --- ± ---	3 PLACES ± --- ± ---	CHECKED BY	DATE			
				2 PLACES ± --- ± ---	1 PLACE ± --- ± ---	APPROVED BY	DATE	MATERIAL NO. SEE CHART IN SHEET 5		DOCUMENT NO. SD-47363-100
		0 PLACE ± --- ± ---	ANGULAR ± 3 ° DRAFT WHERE APPLICABLE MUST REMAIN WITHIN DIMENSIONS		THIS DRAWING CONTAINS INFORMATION THAT IS PROPRIETARY TO MOLEX INCORPORATED AND SHOULD NOT BE USED WITHOUT WRITTEN PERMISSION					

9 8 7 6 5 4 3 2 1

10 9 8 7 6 5 4 3 2 1



COMPOSITE TYPE

OTHER DIMENSIONS REFER TO STRAIGHT TYPE OR RIGHT ANGLE 90 DEGREE TYPE.

SEE SHEET 1 IEC NO: SH2015-0114 DRWG:GLL1 CHKD: APPR:AYJN 2014/09/15	DESCRIPTION REV	QUALITY SYMBOLS	GENERAL TOLERANCES (UNLESS SPECIFIED)	DIMENSION STYLE	SCALE	DESIGN UNITS	THIRD ANGLE PROJECTION	
		$\nabla_F = 0$ $\nabla_{F_2} = 0$ $\nabla_{F_3} = 0$	mm INCH 4 PLACES ± --- ± --- 3 PLACES ± --- ± --- 2 PLACES ± --- ± --- 1 PLACE ± --- ± --- 0 PLACE ± --- ± ---	MM ONLY	4:1	METRIC	DRAWN BY: GLL1 DATE: 2014/09/10 CHECKED BY: DATE:	TITLE
		ANGULAR ± 3 ° DRAFT WHERE APPLICABLE MUST REMAIN WITHIN DIMENSIONS	APPROVED BY: DATE:	COMBO OF SATA & SAS RECEPTACLE CABLE END				
		SEE CHART IN SHEET 5	MATERIAL NO. DOCUMENT NO.	molex				
				SIZE: A3		THIS DRAWING CONTAINS INFORMATION THAT IS PROPRIETARY TO MOLEX INCORPORATED AND SHOULD NOT BE USED WITHOUT WRITTEN PERMISSION		

9 8 7 6 5 4 3 2 1

10 9 8 7 6 5 4 3 2 1

F

E

D

C

B

A

F

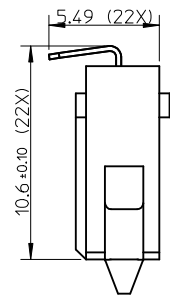
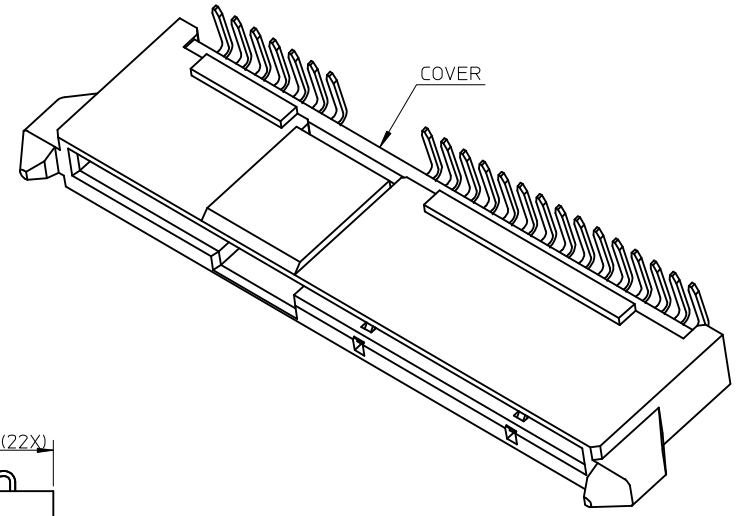
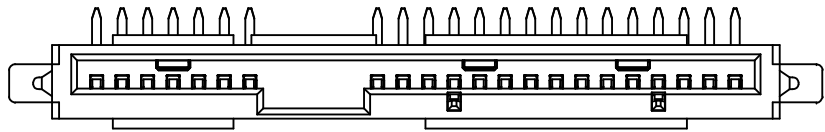
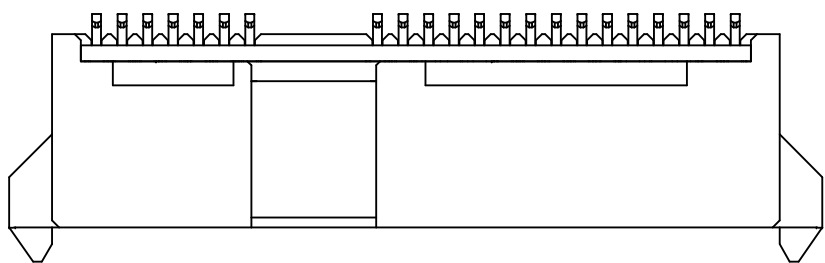
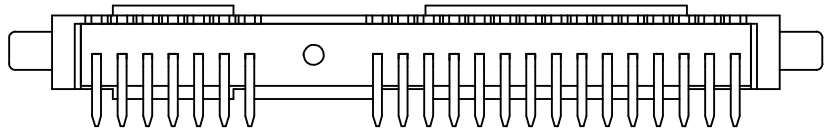
E

D

C

B

A



RIGHT ANGLE 270 DEGREE TYPE
OTHER DIMENSIONS REFER TO RIGHT ANGLE 90 DEGREE TYPE.

SEE SHEET 1 EC NO: SH2015-0114 DRWNG: GLL CHKD: APPR: AYIN 2014/09/10 2014/09/15	DESCRIPTION REV	QUALITY SYMBOLS	GENERAL TOLERANCES (UNLESS SPECIFIED)		DIMENSION STYLE MM ONLY		SCALE 4:1	DESIGN UNITS METRIC	THIRD ANGLE PROJECTION
		$\nabla_{\text{A}} = 0$ $\nabla_{\text{C}} = 0$ $\nabla_{\text{P}} = 0$	mm INCH 4 PLACES ± --- ± --- 3 PLACES ± --- ± --- 2 PLACES ± --- ± --- 1 PLACE ± --- ± --- 0 PLACE ± --- ± ---	DRAWN BY GLL DATE 2014/09/10	TITLE		COMBO OF SATA & SAS RECEPTACLE CABLE END molex		
			ANGULAR ± 3 ° DRAFT WHERE APPLICABLE MUST REMAIN WITHIN DIMENSIONS	CHECKED BY DATE	APPROVED BY DATE			DOCUMENT NO. SD-47363-100	SHEET NO. 4 OF 5
				MATERIAL NO. SEE CHART IN SHEET 5		THIS DRAWING CONTAINS INFORMATION THAT IS PROPRIETARY TO MOLEX INCORPORATED AND SHOULD NOT BE USED WITHOUT WRITTEN PERMISSION			

9 8 7 6 5 4 3 2 1

