

## Mixers Double Balanced

### Applications

- Wideband Down Converters
- Wideband Up Converters
- Balanced Modulators
- Bi-Phase Modulators
- Phase Detectors



### Features

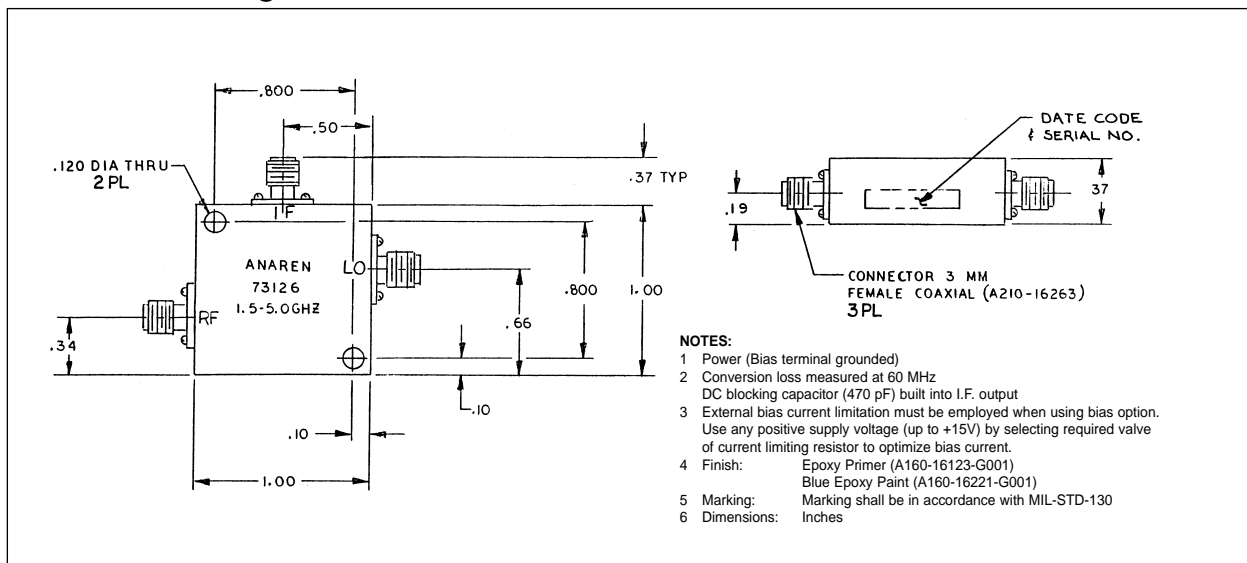
- Extremely Wide IF Bandwidth
- Good LO/RF Isolation
- Multi-Octave Performance
- Good Intercept Point
- Miniature Size
- Connectors Per MIL-C-39012

### Electrical Specifications

Frequency GHz	Isolation LO-RF dB Min/Typ	Convers. Loss dB Max/Typ	VSWR, RF Typ : 1
1.5 - 5.0	18/28	8.5/7.0	3.5
IF Freq. <sup>1</sup> MHz	RF Power <sup>2</sup> Input dBm	LO Power dBm Nominal	
DC-1500	+4	+12	

**Notes:** Impedance: 50 ohms nominal. Meets MIL-E-5400 Class 3 requirements. Additional screening available for military and space applications. 1) Upper IF frequency is the -3 dB response point. 2) At 1dB Compression point **Electrical and Mechanical Specifications subject to change without notice.**

### Outline Drawing



# Mouser Electronics

Authorized Distributor

Click to View Pricing, Inventory, Delivery & Lifecycle Information:

[Anaren:](#)

[73126](#)