

MICRO SWITCH
a Honeywell Division

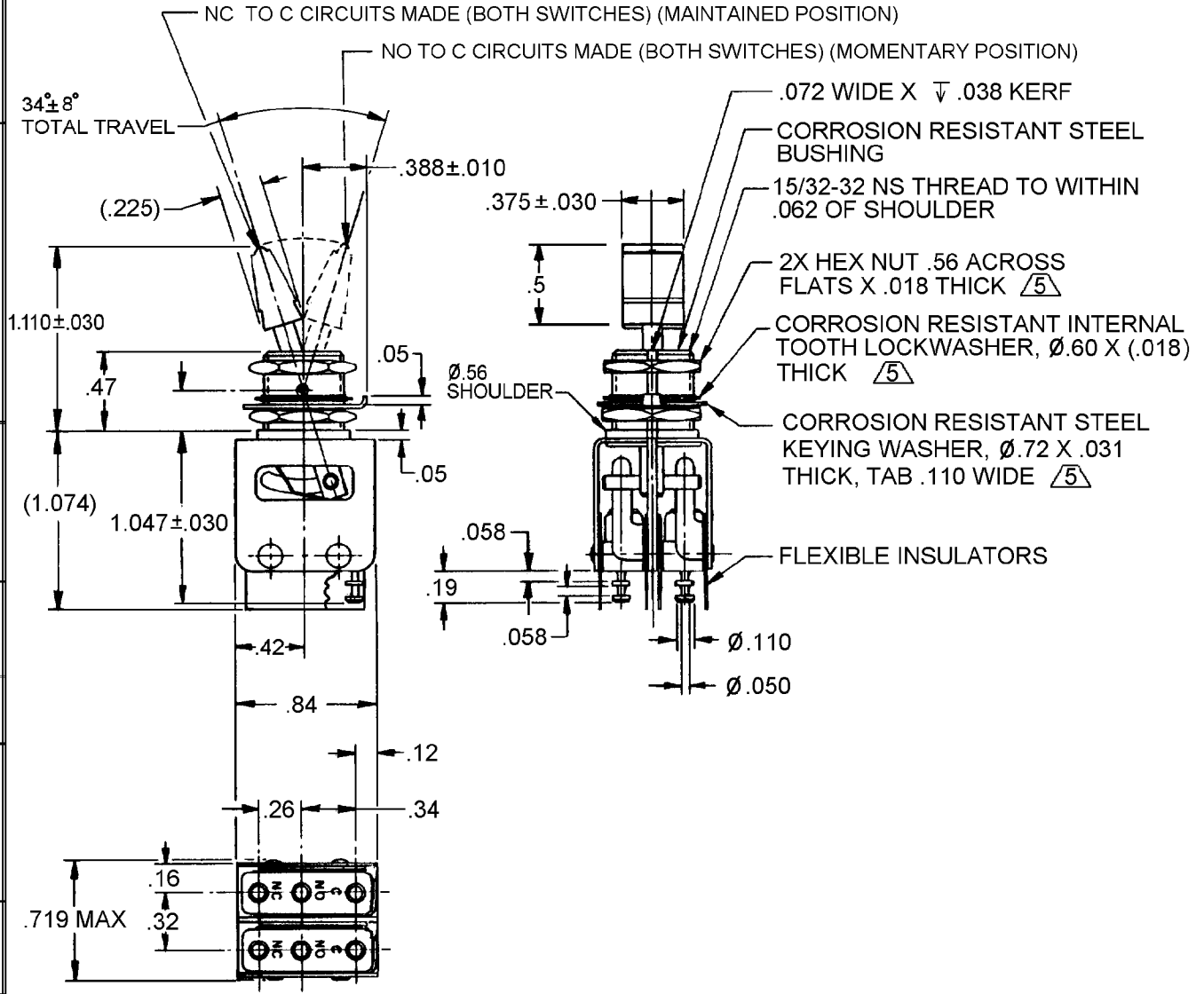
FED. NF6 CODE 91929

ASSEMBLY - TOGGLE SWITCH

CATALOG LISTING

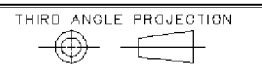
23AT403-T2

CATALOG LISTING
23AT403-T2
 PAGE 1 OF 1
M
 ISSUE 8
 REVISIONS
 A 206051 DLT 25 JUL 02
 B 0014323 DDS 29 JUL 05
 CHECK
 25 JUL 02
 SAV
 CHECK
 25 JUL 02
 DRAWN
RASTER



- NOTES**
- 1 - UNIT INCLUDES 2X CAT. LIST. 1SM1-T2 BASIC SWITCH
 - 2 - TERMINALS ARE PLATED FOR SOLDERING
 - 3 - SWITCHES DO NOT NECESSARILY OPERATE SIMULTANEOUSLY
 - 4 - KNOB PORTION OF TOGGLE LEVER BRIGHT ANODIZED
 - (5) HARDWARE FURNISHED ASSEMBLED WITH SWITCH OR IN PACKET PER MIL-PRF-8805
 - 6 - REPLACEMENT MOUNTING HARDWARE PACKET 15PA312-AT

THIS DRAWING COVERS A PROPRIETARY ITEM AND IS THE PROPERTY OF MICRO SWITCH, A DIVISION OF HONEYWELL. THIS DRAWING IS NOT TO BE COPIED OR USED WITHOUT THE APPROVAL OF MICRO SWITCH.



CHARACTERISTICS	ELECTRICAL DATA	SCALE FULL	DO NOT SCALE PRINT
	CONTACT ARRANGEMENT 2X SPDT	UNLESS OTHERWISE SPECIFIED TOLERANCES ARE	
	250 VAC ----- 5 AMP	ONE PLACE (.0)	±.030
	30 VOLTS DC RATING	TWO PLACE (.00)	±.015
	INDUCTIVE ----- SEA LEVEL ----- 3 AMP	THREE PLACE (.000)	±.005
	50,000 FT. ----- 2.5 AMP	ANGLES	±
	RESISTIVE ----- SEA LEVEL ----- 5 AMP		
	50,000 FT. ----- 5 AMP		
	MAXIMUM INRUSH ----- 24 AMP		
		WEIGHT	.06 LB APPROX