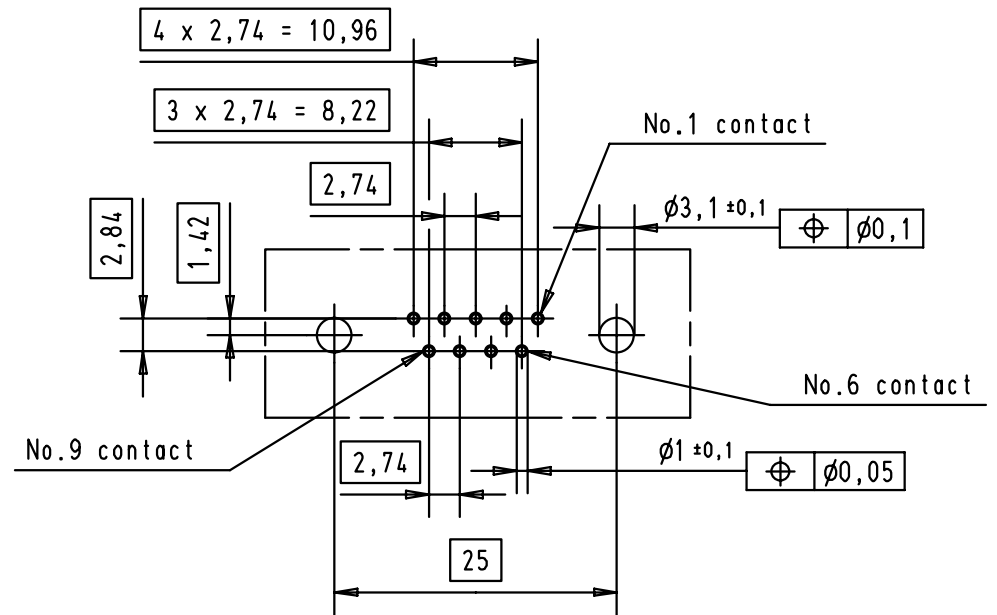
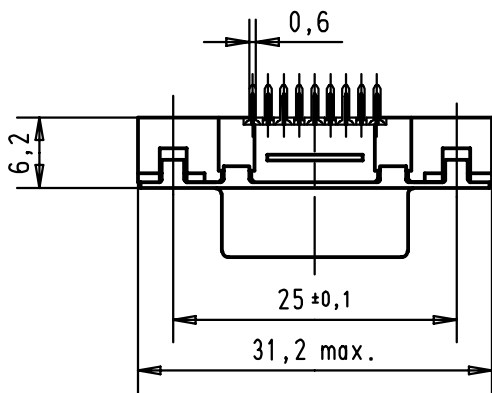


Printed board layout component side



						Dat.		Name		<p>All Dim. in mm Orig. Size DIN A 4</p>	D-sub, 9 poles, female, straight, with solder pins 2,9 and holes.	Maßstab/ Scale 1,5:1
						Detail.	05/03/02	CV				
						Insp.						
						Stand.						
09 66 111 6500	3,1 ± 0,1	2				HARTING EURL		TB 09 66 111 x50x		Blatt/ Page 1		
09 66 111 7500	3,1 ± 0,1	3			F-95972 Paris							
09 66 111 5500	3,1 ± 0,1	0,76 µm Au	29723	05/03/02	CV							
Part number	∅ hole	Performance level	Mod.	Dat.	Name							

5

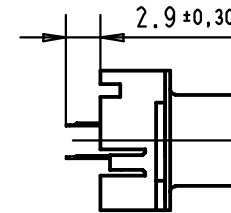
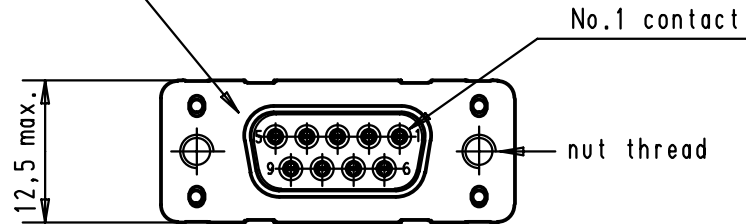
4

3

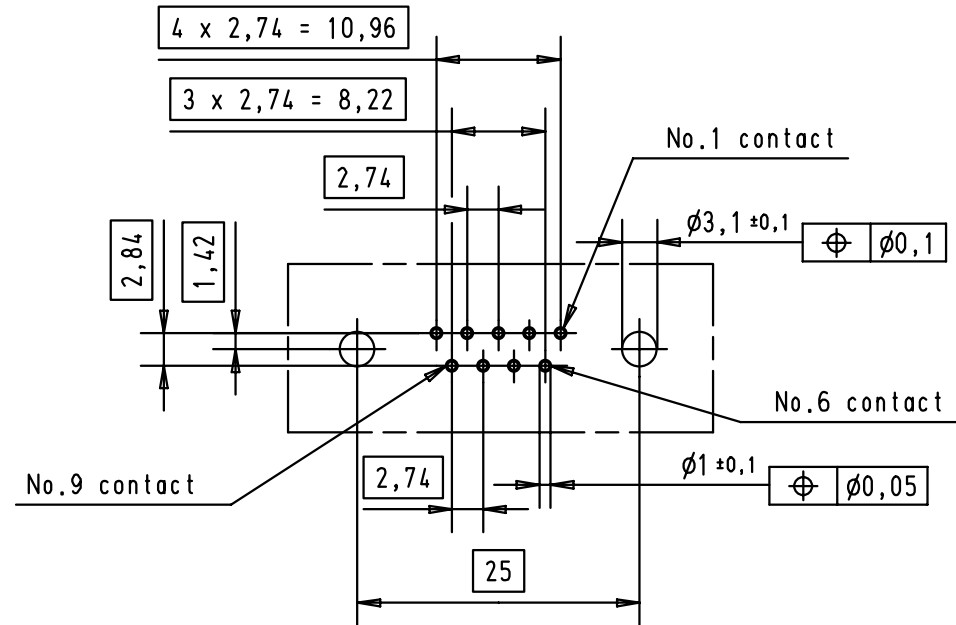
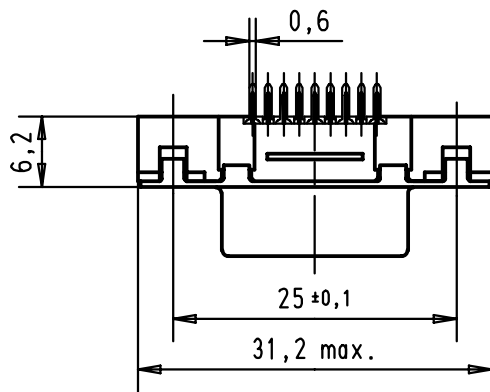
2

1

Mating face according to: MIL-C-24308 / DIN 41652 / CECC 75301-802

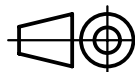



Printed board layout
component side



A

09 66 111 6501	M3	2								
09 66 111 7501	M3	3								
09 66 111 5501	M3	0,76 μm Au								
09 66 111 6502	4-40 UNC	2								
09 66 111 7502	4-40 UNC	3								
09 66 111 5502	4-40 UNC	0,76 μm Au	29723	05/03/02	CV					
Part number	Nut thread	Performance level	Mod.	Dat.	Name					

	Dat.	Name	 All Dim. in mm Orig. Size DIN A 4
Detail.	05/03/02	CV	
Insp.			
Stand.			
HARTING EURL F-95972 Paris			

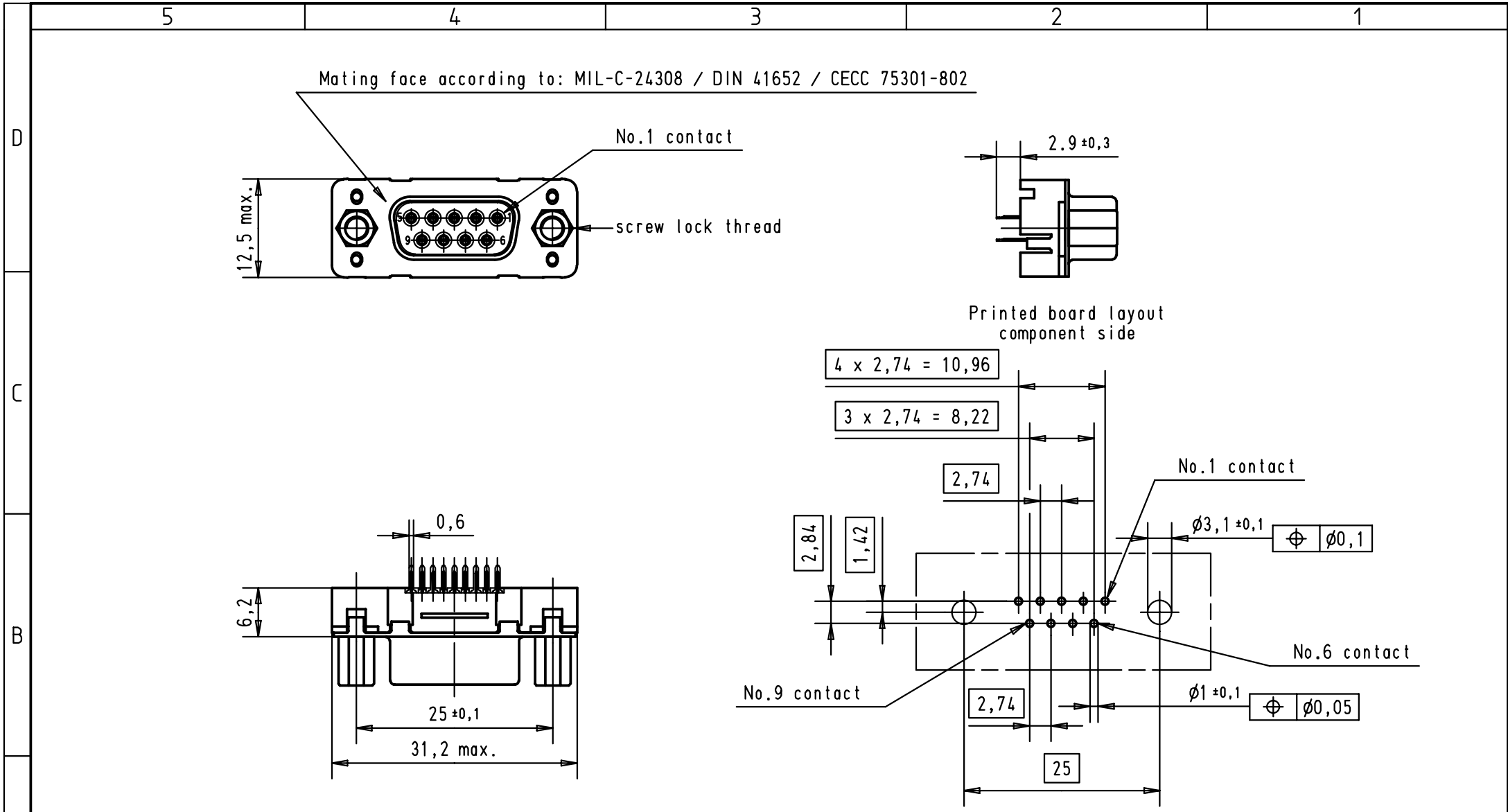
D-sub, 9poles,
female, straight,
with solder pins 2,9 and nuts

TB 0966111x50x

Sub.

Maßstab/
Scale
1,5:1

Blatt/ Page
2



						Dat. 05/03/02 Name CV		All Dim. in mm Orig. Size DIN A 4	D-sub, 9poles, female, straight, with solder pins 2.9, and screw locks.	Maßstab/ Scale 1,5:1
						Insp.				
						Stand.				
09 66 111 6503	4-40 UNC	2				HARTING EURL F-95972 Paris		TB 09 66 111 x50x Sub.	Blatt/ Page 3	
09 66 111 7503	4-40 UNC	3								
09 66 111 5503	4-40 UNC	0,76 µm Au	29723	05/03/02	CV					
Part number	Screw lock thread	Performance level	Mod.	Dat.	Name					

09 66 111 5503

Printed board connector

Other applications

gender	female connector, straight
Termination	Stamped solder pins
shell	tinned metal shell
Number of contacts	9 way
Board fixing	without grounding board lock
flange	with screw lock UNC 4-40
Performance level	Performance level S4
Material	PBTP

Note: Obligatory information about HARTING products can be obtained exclusively from the data sheets.



The data sheet is up to date

2D files

Typenblatt

Typenblatt

09 66 111 5501

Printed board connector

Other applications

gender	female connector, straight
Termination	Stamped solder pins
shell	tinned metal shell
Number of contacts	9 way
Board fixing	without grounding board lock
flange	M 3
Performance level	Performance level S4
Material	PBTP

Note: Obligatory information about HARTING products can be obtained exclusively from the data sheets.



The data sheet is up to date

2D files

Typenblatt

Typenblatt

09 66 111 5502

Printed board connector

Other applications

gender	female connector, straight
Termination	Stamped solder pins
shell	tinned metal shell
Number of contacts	9 way
Board fixing	without grounding board lock
flange	UNC4-40
Performance level	Performance level S4
Material	PBTP

Note: Obligatory information about HARTING products can be obtained exclusively from the data sheets.



The data sheet is up to date

2D files

Typenblatt

Typenblatt

09 66 111 5500

Printed board connector

Other applications

gender	female connector, straight
Termination	Stamped solder pins
shell	tinned metal shell
Number of contacts	9 way
Board fixing	without grounding board lock
flange	hole 3.1 mm
Performance level	Performance level S4
Material	PBTP

Note: Obligatory information about HARTING products can be obtained exclusively from the data sheets.



The data sheet is up to date

2D files

Typenblatt

Typenblatt