

SIGN	DATE	DESCRIPTION	APPROVER
		<i>THIS IS CAD DRAWING, DO NOT REVISE MANUALLY!!!</i>	

- Material:
- Solid PIN: Brass(CuZn)
 - Surface of solder tail: Tin plated
 - Insulator(housing): Thermoplastic (UL94V-0)

- Electrical:
- | | | | | |
|--------------------------|------------------|-------|-------|-------|
| | UL | CSA | VDE | TUV |
| ● Voltage rating: | 300V | 300V | 300V | 300V |
| ● Current rating: | 10A | 10A | 12A | 15A |
| ● Withstanding Voltage: | 1.6KV | 1.6KV | 2.5KV | 2.5KV |
| ● Operating temperature: | -40°C to +115°C | | | |
| ● Soldering temperature: | 250°C±10°C/5 Sec | | | |
| ● Safety Approval: | | | | |

RoHS Compliant

PART NUMBER:

OSTOPXX0000

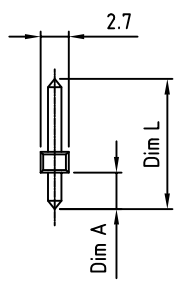
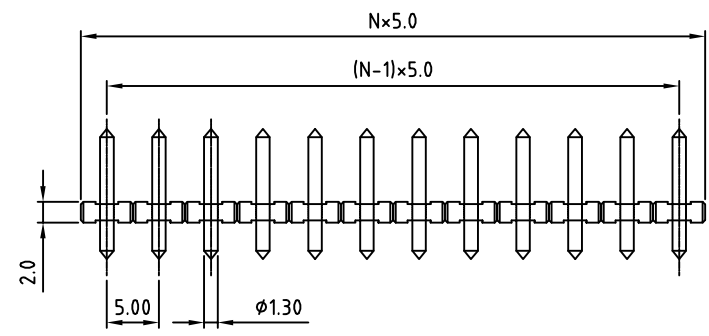
- No. of Poles
- 02: Poles
 -
 - 24: Poles

- Dim L Length
- 0 12.5mm (φ1.3 - (Dim A = 3.5) - STANDARD
 - 1 13.0mm (Upφ1.3 Downφ1.0) (Dim A = 4.3)
 - 2 12.5mm(Upφ1.3 Downφ1.0) (Dim A = 3.5)
 - 3 11.5mm(φ1.3) (Dim A = 1.9)
 - 4 14.2mm(φ1.3) (Dim A = 2.9)
 - 5 17.5mm(φ1.3) (Dim A = 3.5)
 - 6 20.0mm(φ1.3) (Dim A = 3.5)
 - 7 18.0mm(Upφ1.3 Downφ1.0) (Dim A = 3.5)
 - 8 16.2mm(Upφ1.3 Downφ1.0) (Dim A = 3.5)
 - 9 16.5mm(φ1.3) (Dim A = 3.5)
 - F 12.5x8.8mm Bent pin (φ1.3)
 - H 25.5mm(φ1.3) (Dim A = 3.5)
 - J 13.0mm pin (φ1.3) (Dim A = 3.5)
 - K 12.0mm(UPφ1.3 DOWN φ1.0) Round Pin

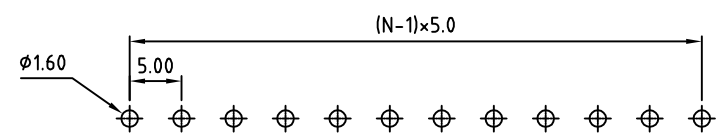
non-standard may require MOQ



N = Number of contact



P.C.B. LAYOUT



THESE DRAWINGS AND SPECIFICATIONS ARE THE PROPERTY OF ON-SHORE TECHNOLOGY, INC. AND SHALL NOT BE REPRODUCED, COPIED OR USED IN ANY MANNER WITHOUT THE PRIOR WRITTEN CONSENT OF ON-SHORE TECHNOLOGY, INC.



TITLE		OSTOP 5.0mm Series 2p-24p				
PART NO.	OSTOPXX0000	DWG NO.	OSTOPXX0000.DWG			
APPROVED	CHECKED	DESIGNED	DRAWN	CUST NO.	Tolerance	
Shi Jun 2006.10.30	Shi Jun 2006.10.30	Tony 2006.10.30	Tony 2006.10.30		X. ±0.50	
					UNIT: mm	X.X ±0.30
				SHEET: 01/01	SCALE: NONE	X.XX ±0.10
				REV: E	X° ±1°	